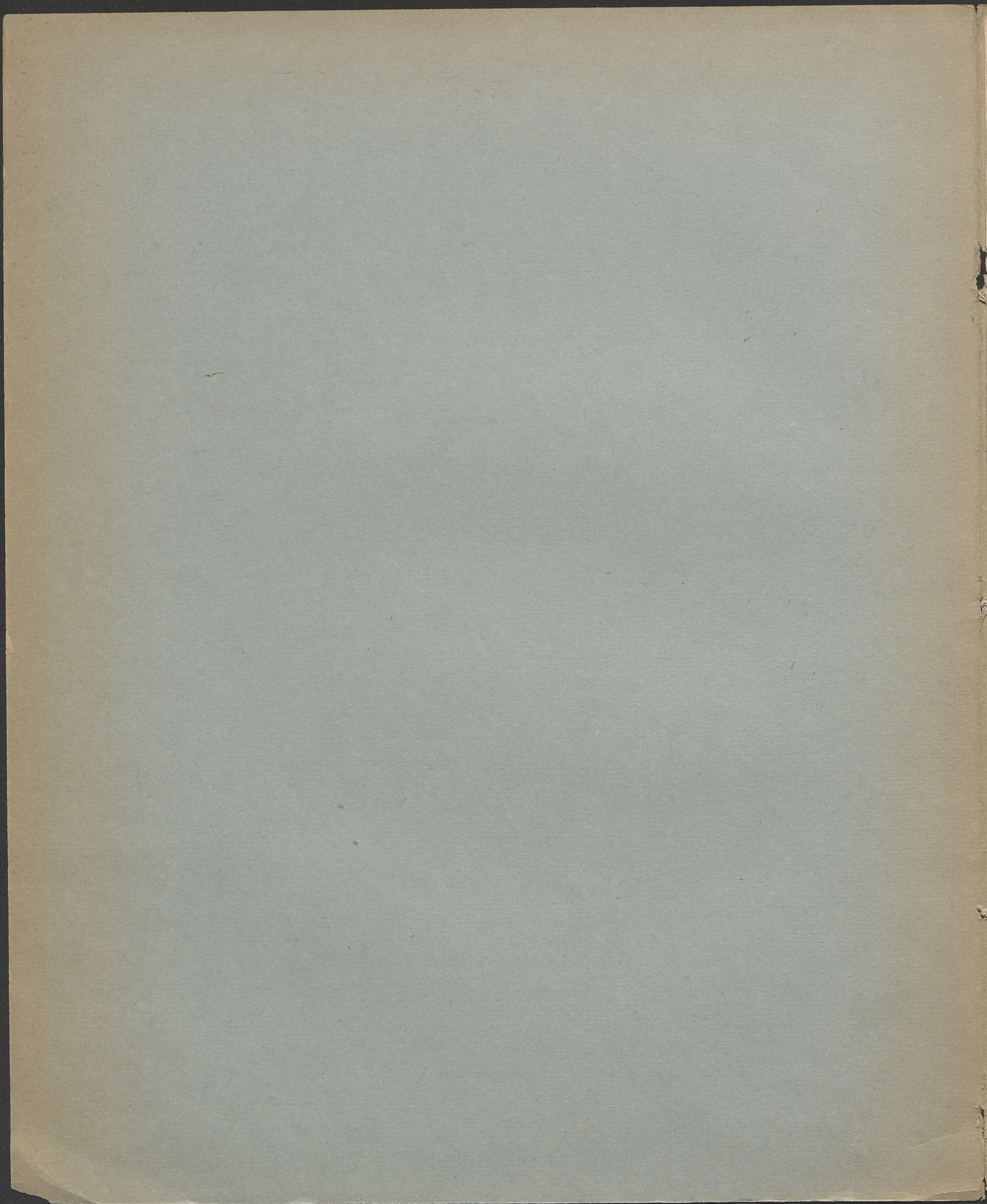


9206 III

musicals



601  
OFIAROWANY W<sup>mu</sup> JANOWI KOTWICZ W DZIEŃ ŚLUBU

# JĄŚ-MAZUR

NA FORTEPIAN

napisał

## MICHAŁ SZULC.

Cena 20kop.

NAKŁAD I WŁASNOŚĆ WYDAWCÓW  
WARSZAWA, GEBETHNER I WOLFF.

FILIA W ŁODZI.

KRAKÓW G. GEBETHNER I S<sup>KA</sup>

KIJÓW LIDZIKOWSKI

Дозволено Цензурою Варшава 31 Декабря 1896г

Lit. Męcarski 40 Krak Przed Warszawa

9206

III

Mus.

# JAS-MAZUR

ofiarowany W<sup>nu</sup> JANOWI KOTWICZ w dzień slubu

Michał SZULC.

PIANO. *f*

*Fine.* *f*

G 1847 W  
 BIBLIOTHECA  
 VNIV. CRACOVIENSIS  
 LABELL.

K. 1960 nr 115

Musical notation for the first system, featuring a treble and bass staff with a key signature of two sharps and a common time signature. The music includes dynamic markings like 'V' and a section labeled 'D. S. al Fine.'

TRIO.

Musical notation for the second system, labeled 'TRIO.' with a dynamic marking 'f'. It features a treble and bass staff with a key signature of one sharp and a common time signature.

Musical notation for the third system, featuring a treble and bass staff with a key signature of one sharp and a common time signature.

Musical notation for the fourth system, featuring a treble and bass staff with a key signature of one sharp and a common time signature. It includes a dynamic marking 'f'.

Musical notation for the fifth system, featuring a treble and bass staff with a key signature of one sharp and a common time signature. It includes a dynamic marking 'f' and a section labeled 'Mazur D.C.'

G 1847 W

BIBLIOTHECA  
 UNIV. MARCELLI  
 CRACOVIENSIS

Dernières éditions musicales.  
MAZUR ET MARCHES.

Bal biały. Mazur. Lewandowski L. Pr. 30 kop.

Musical score for 'Bal biały' by Lewandowski, Op. 30. It features a single melodic line on a five-line staff with a treble clef and a key signature of one sharp (F#). The music is in 3/4 time and includes various ornaments and dynamic markings.

Flirt. Mazur. Lewandowski L. Pr. 30 kop.

Musical score for 'Flirt' by Lewandowski, Op. 30. It features a single melodic line on a five-line staff with a treble clef and a key signature of one sharp (F#). The music is in 3/4 time and includes various ornaments and dynamic markings.

Fredro. Mazur. Lewandowski L. Pr. 30 kop.

Musical score for 'Fredro' by Lewandowski, Op. 30. It features a single melodic line on a five-line staff with a treble clef and a key signature of one sharp (F#). The music is in 3/4 time and includes various ornaments and dynamic markings.

Maruder. Mazur. Lewandowski L. Pr. 30 kop.

Musical score for 'Maruder' by Lewandowski, Op. 30. It features a single melodic line on a five-line staff with a treble clef and a key signature of one sharp (F#). The music is in 3/4 time and includes various ornaments and dynamic markings.

Pif-paf-puf. Mazur. Lewandowski L. Pr. 40 kop.

Musical score for 'Pif-paf-puf' by Lewandowski, Op. 40. It features a single melodic line on a five-line staff with a treble clef and a key signature of one sharp (F#). The music is in 3/4 time and includes various ornaments and dynamic markings.

Stary uruh. Mazur. Lewandowski L. Pr. 30 kop.

Musical score for 'Stary uruh' by Lewandowski, Op. 30. It features a single melodic line on a five-line staff with a treble clef and a key signature of one sharp (F#). The music is in 3/4 time and includes various ornaments and dynamic markings.

Oj! tak, tak. Mazur. Namysłowski K. Pr. 60 kop. (4 Mazury)

Musical score for 'Oj! tak, tak' by Namysłowski, Op. 60. It features a single melodic line on a five-line staff with a treble clef and a key signature of one sharp (F#). The music is in 3/4 time and includes various ornaments and dynamic markings.

Hop ciuch. Mazur. Namysłowski K. Pr. 70 kop. (Album II)

Musical score for 'Hop ciuch' by Namysłowski, Op. 70. It features a single melodic line on a five-line staff with a treble clef and a key signature of one sharp (F#). The music is in 3/4 time and includes various ornaments and dynamic markings.

Wasal. Mazur. Namysłowski K. Pr. 70 kop. (Album II)

Musical score for 'Wasal' by Namysłowski, Op. 70. It features a single melodic line on a five-line staff with a treble clef and a key signature of one sharp (F#). The music is in 3/4 time and includes various ornaments and dynamic markings.

Czarne oczy. Mazur. Namysłowski K. Pr. 70 kop. (Album II)

Musical score for 'Czarne oczy' by Namysłowski, Op. 70. It features a single melodic line on a five-line staff with a treble clef and a key signature of one sharp (F#). The music is in 3/4 time and includes various ornaments and dynamic markings.

Ostatnie nowości muzyczne.  
MAZURY I MARSZE.  
Podkówecki dajcie ognia. Mazur. Namysłowski K. Pr. 70 kop. (Album II)

Musical score for 'Podkówecki dajcie ognia' by Namysłowski, Op. 70. It features a single melodic line on a five-line staff with a treble clef and a key signature of one sharp (F#). The music is in 3/4 time and includes various ornaments and dynamic markings.

Dla młodej pany. Mazur. Osmański W. Pr. 60 kop. (4 Mazury)

Musical score for 'Dla młodej pany' by Osmański, Op. 60. It features a single melodic line on a five-line staff with a treble clef and a key signature of one sharp (F#). The music is in 3/4 time and includes various ornaments and dynamic markings.

Po Warszawsku. Mazur. Osmański W. Pr. 60 kop. (4 Mazury)

Musical score for 'Po Warszawsku' by Osmański, Op. 60. It features a single melodic line on a five-line staff with a treble clef and a key signature of one sharp (F#). The music is in 3/4 time and includes various ornaments and dynamic markings.

Wypili, wypili nie zostawił. Osmański W. Pr. 60 kop. (4 Mazury)

Musical score for 'Wypili, wypili nie zostawił' by Osmański, Op. 60. It features a single melodic line on a five-line staff with a treble clef and a key signature of one sharp (F#). The music is in 3/4 time and includes various ornaments and dynamic markings.

Stary kmiotek. Mazur. Osmański W. Pr. 60 kop. (4 Mazury)

Musical score for 'Stary kmiotek' by Osmański, Op. 60. It features a single melodic line on a five-line staff with a treble clef and a key signature of one sharp (F#). The music is in 3/4 time and includes various ornaments and dynamic markings.

Mansz śpiewaczy. Maszyński P. Pr. 40 kop. *ad libitum*

Musical score for 'Mansz śpiewaczy' by Maszyński, Op. 40. It features a single melodic line on a five-line staff with a treble clef and a key signature of one sharp (F#). The music is in 3/4 time and includes various ornaments and dynamic markings.

Dratwka. Marsz. Namysłowski K. Pr. 70 kop. (Album II)

Musical score for 'Dratwka' by Namysłowski, Op. 70. It features a single melodic line on a five-line staff with a treble clef and a key signature of one sharp (F#). The music is in 3/4 time and includes various ornaments and dynamic markings.

Tempo di marcia. Sartorio A. Op. 90. Pr. 20 kop.

Musical score for 'Tempo di marcia' by Sartorio, Op. 90. It features a single melodic line on a five-line staff with a treble clef and a key signature of one sharp (F#). The music is in 3/4 time and includes various ornaments and dynamic markings.

Matgorzata. Marsz. Wagner J. F. Pr. 30 kop.

Musical score for 'Matgorzata' by Wagner, Op. 30. It features a single melodic line on a five-line staff with a treble clef and a key signature of one sharp (F#). The music is in 3/4 time and includes various ornaments and dynamic markings.

Marche espagnole. Ziehrer C. M. Pr. 20 kop.

Musical score for 'Marche espagnole' by Ziehrer, Op. 20. It features a single melodic line on a five-line staff with a treble clef and a key signature of one sharp (F#). The music is in 3/4 time and includes various ornaments and dynamic markings.

