

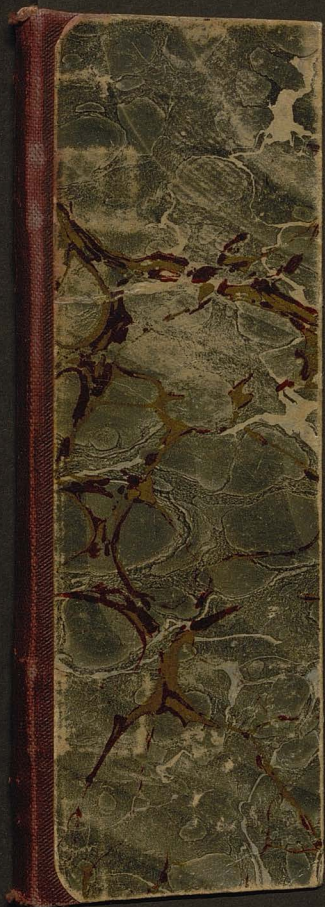
OMERA

5

5  
BIBLI. E. ROMERA

31.VIII.  
Prut.

24	1907.	
----	-------	--





1907

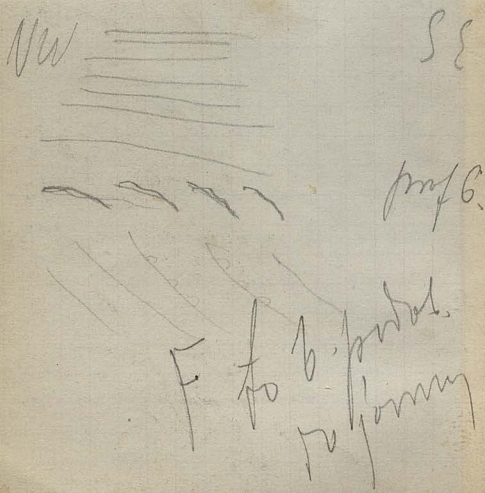
for. Nototrudu 2 4 strona!

Miskuligun

Profile No. 3 fragment,  
size 2 1/4 piece



pond 5 / ~~audience~~  
 to drive through town  
 704'2, 704'8.  
 Boring next 706'2



4  
 K  
 C  
 o  
 S  
 v  
 S  
 p  
 b  
 K  
 6  
 K  
 2

4 prof. 4. Tonio same  
 pisnove iloste a mize 2 Tupa  
 Koni puvaystoma bogot. 4  
 Muzi regl. craytu. Nel tem  
 Izniona fova. kvarytorez  
 padolem

5) Koro 76.5 km. Ricerma  
 S 70 W N 70 E

Kozni 25 km N 20 W  
 ar do Boviaps mouto  
 te sto. ponup ar do rompy  
 pny Bovi. Mouto km. 76.6.

Profil plovoro rozigga ca 25 m.  
 - 76.85

6) Koro 76.75 poverny profil  
 ca 25 m. izvorni plov.

gorn - 5 troky slopka v rade  
 Kier N 75 E S 75 E  
 Zap. N 15 E ca 50°

F. Hoagwood  
Spencer, Va.

po  
ga  
pr  
Co  
pr  
Sh  
to  
the  
G  
T  
o  
o  
W  
2.  
H  
m  
V  
t  
o

ponad grubościanymi pióram.  
 ze szorstką powierzchnią  
 przesłoniętą krótkimi  
 włoskami i rozprzeczonymi.  
 włoskami szorstkimi i szorstkimi.  
 Wł. przynajmniej od ogrońca piórek,  
 jeśli chodzi o szorstkość  
 lekko różni się.

Główny porażenie piórek 6  
 705 mm. ca 15 m. wzdł.  
 1 szt. spongi Konepl. porażona  
 w inkubatorze.

Wzrost h. 8'30". Pm 708'2

2. VIII h. 9a Pm 709'7 1148 m

Wł. Półka 2 pod skórą 1147 m  
 nowo tuż przy przepiętym  
 Kulejnego - Włoski na  
 karku 30 cm. grub. porażony  
 ca. drzew, ciemnego koloru,

~~Strona~~ № 7.

Teodora  
porchylam  
występną pora  
Korymbium, lew + blisnow  
Ory wie podmysie inżynier?  
Uo + ionymie wie wdoi.  
Kongres prof. 7 go wtry i  
siate odsianki przesuwon  
prof. № 7 wistodly nie na  
Stron - ca + wym. 705'2  
Monory sie Stron elonginy  
wopisowany - wimy kroguz  
obserwac do tej dy odwie.  
4 gane dalej stron Strony wille.  
Kwi lewko pomoyony - ry.  
warkie + wysobos 694'2  
juw + lecie (wostepna + Str 699'2  
703'5

mian z rocznie grubymi arkadami  
 Vomis iup kow jom i clem  
 propielotyca. Wkr. N504/S502  
 Zapad kca S4/S50  
 Kymedica ca 20 m 4 gory  
 Kusurdoni i medie to sam  
 ± 50


profil VIII

korytuy bregny na ogit  
 N20-30 4/S E Zapad kca  
 S4 od 20 - 80 0 agr. umiary  
<sup>zbito</sup>  
 jhs korce repriste z zydami  
 Malcytu 10 - 30 cm grube  
 jhs korce jonyui i clem  
 jhs korce - 4 agole bnda  
 jhs korce do prof. VII N E



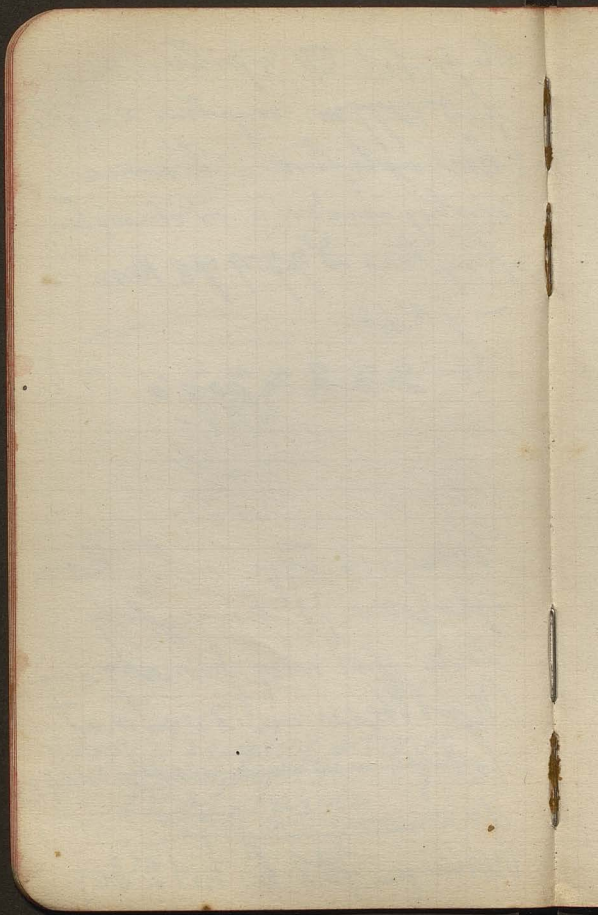
fordouyey shoy  
notkuika

M. profil VIII 4 potence 2  
 part 1077 m. vantage vantage  
 hieroglyfice - Te some  
 vantage vantage vantage  
 part 1000 and ~~779~~ 78 km

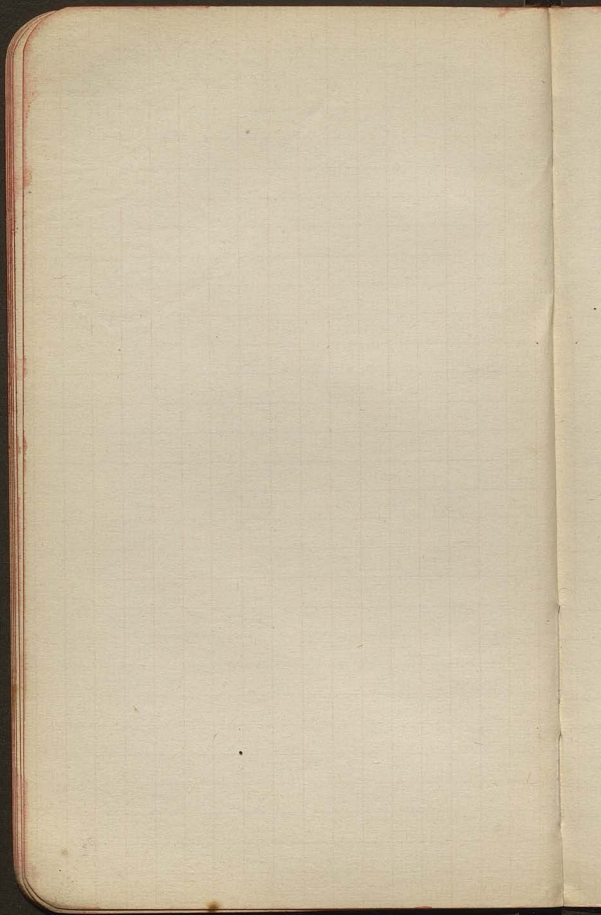
- 78.15  
 S 4  NE



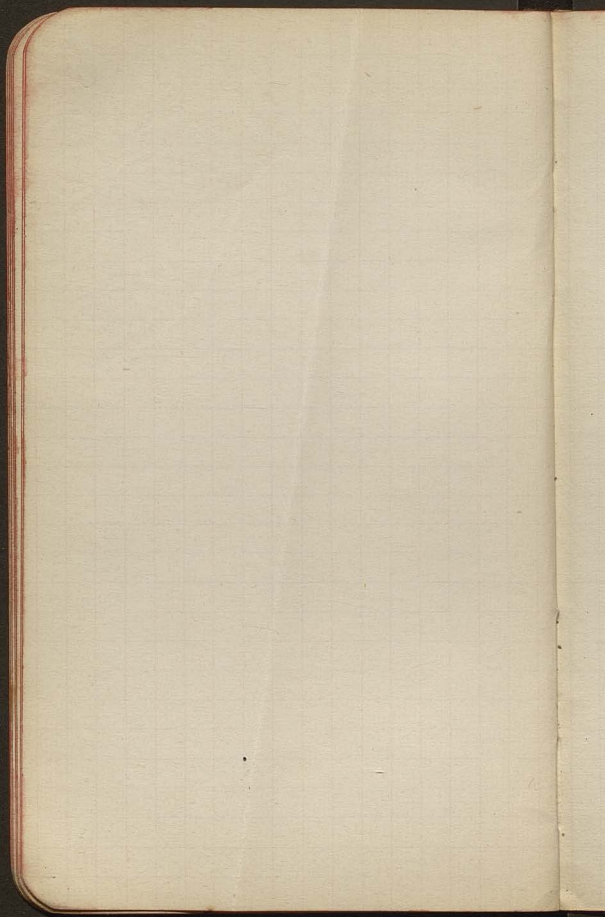
Abundant type. vantage hieroglyfice  
 hieroglyfice hieroglyfice  
 na spodniej primoryie  
 Nadthem ca 30 m nad  
 lot 45-50 m od seky vantage  
 gromozbivie partei  
 Wills from 708'6. h. 12:30 p



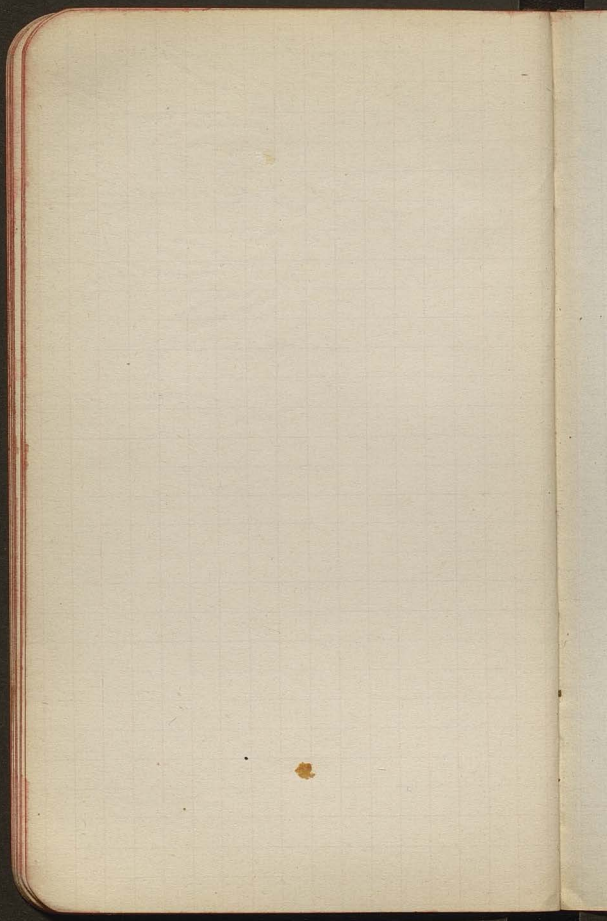




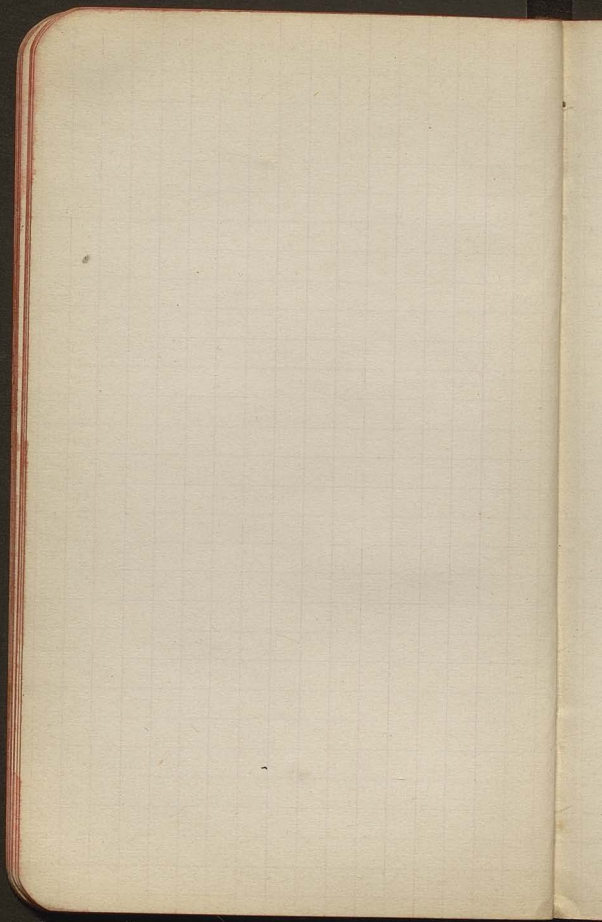
7



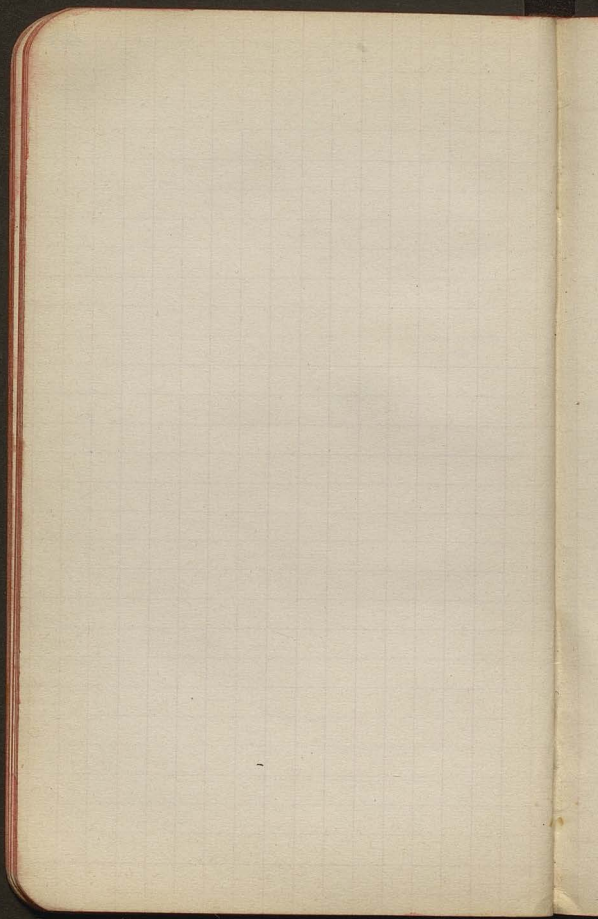




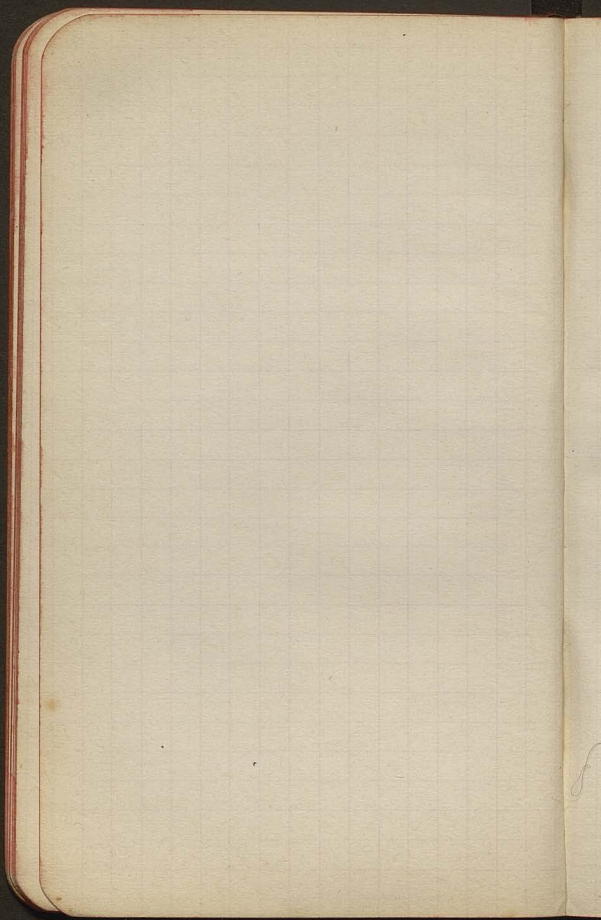




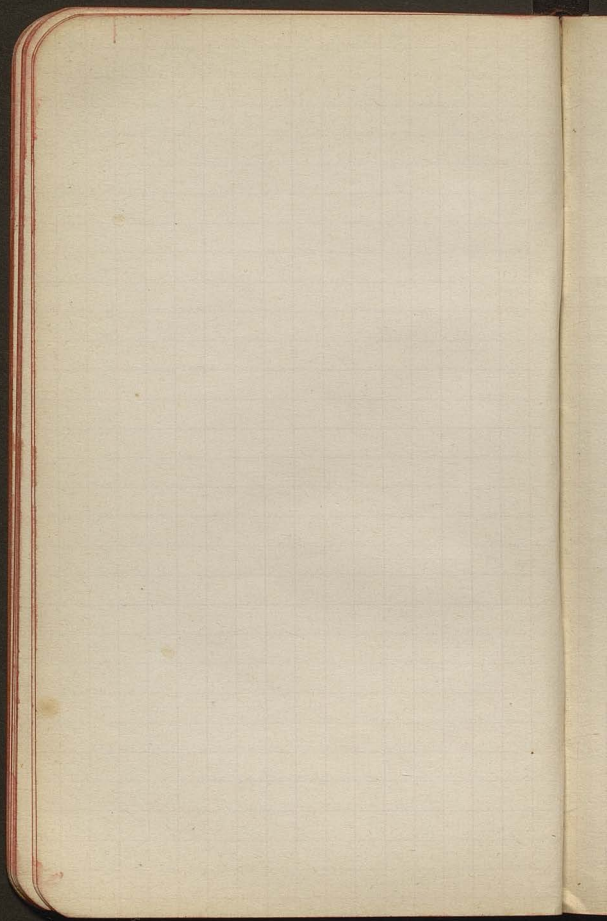




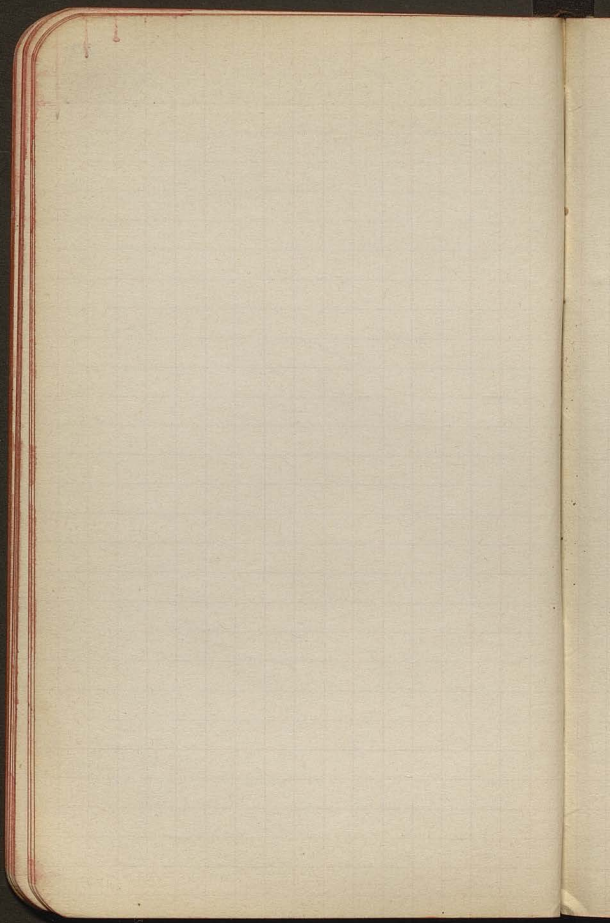




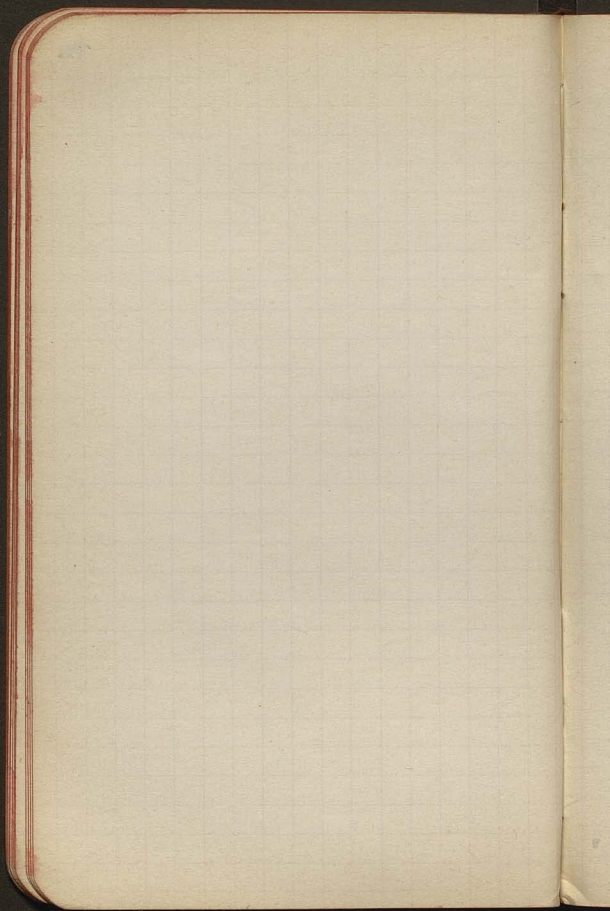
8



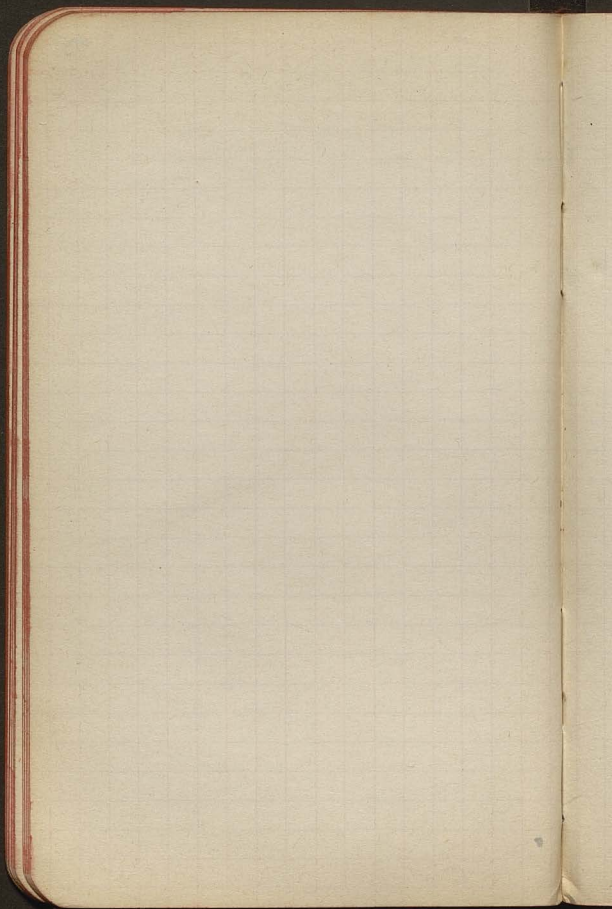
13



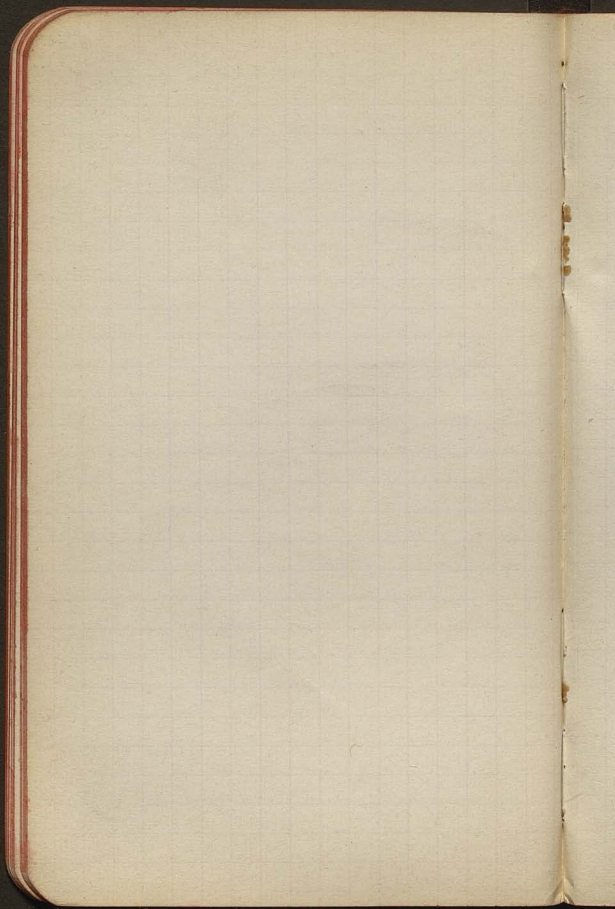
14



15







17

19. VIII 1907

Den. 908.8 2.500

God. 7 per. 4. 10000

per. 10. 10000

N/S sep. 11 250

Any amount. 100. 100

operation - 10000

10000

10000 - 10000

10000

10000

10000

10000

10000

10000

10000



X W. J. Delaware  
the 10.19

Aug 8. 6. k. 12.40. not kept  
Cremor - estimate  
I'd so far give 100 franc  
identity information  
of information 4 300/53  
July 24 15.20  
2004. Not the same  
and keep in hand  
Prop. John. Secy. info  
One term. 1000 1/2 / 100  
of 10-15 X  
my home more often  
from. 1000 1/2 / 1000  
not for term.





15  
16  
17  
18  
19  
20  
21  
22  
23  
24  
25  
26  
27  
28  
29  
30  
31  
32  
33  
34  
35  
36  
37  
38  
39  
40  
41  
42  
43  
44  
45  
46  
47  
48  
49  
50  
51  
52  
53  
54  
55  
56  
57  
58  
59  
60  
61  
62  
63  
64  
65  
66  
67  
68  
69  
70  
71  
72  
73  
74  
75  
76  
77  
78  
79  
80  
81  
82  
83  
84  
85  
86  
87  
88  
89  
90  
91  
92  
93  
94  
95  
96  
97  
98  
99  
100

View Sky near entrance  
Apr. 30. 1911.  
Apr. 30. 1911.

Sky, No 4, 7.00 p.m.

Spind. 1/2 in a row, 1/2 p.m.

Sky, No 4, 1/2 p.m.

Sky, very clear, 1/2 p.m.

Sky, 1/2 p.m. 1/2 p.m.

Sky, 1/2 p.m. 1/2 p.m.

Sky, 1/2 p.m. 1/2 p.m.

Sky, 1/2 p.m. 1/2 p.m.

Sky, 1/2 p.m. 1/2 p.m.

Sky, 1/2 p.m. 1/2 p.m.

Sky, 1/2 p.m. 1/2 p.m.

Sky, 1/2 p.m. 1/2 p.m.

From above the ...  
the ...



the ...  
the ...

the ...

the ...

the ...

the ...

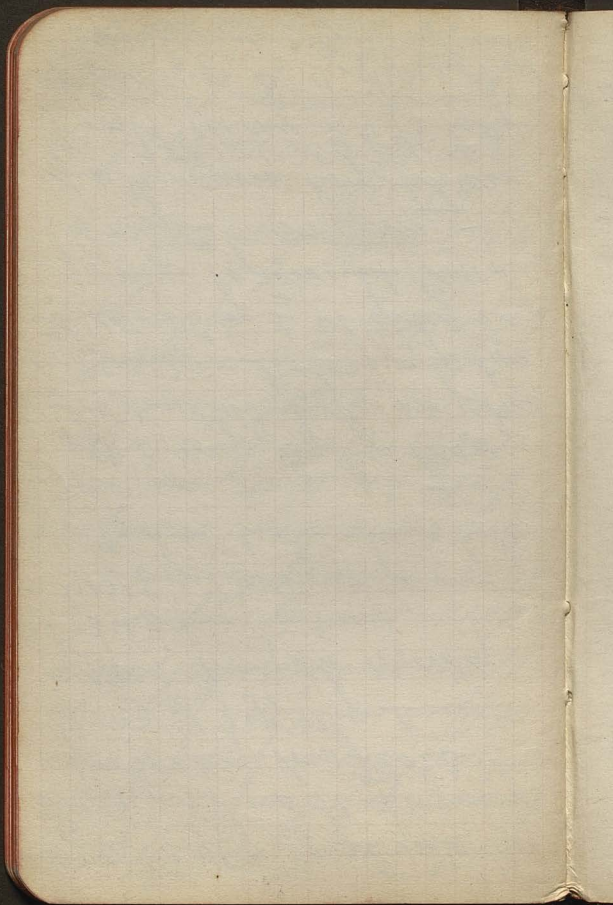
the ...

the ...

the ...







Jan 9<sup>th</sup> 1880

Frank City to some way

regard all the same time  
MS copy 21 = 16. m. 1212

If sent 1212

copy of manuscript ready

Frank and Miss Mary with

copy ready for review - m. 1212

MS copy 21 of 17th 1212

MS copy 21 of 17th 1212

MS copy 21 of 17th 1212

MS copy 21 of 17th 1212

MS copy 21 of 17th 1212

MS copy 21 of 17th 1212

MS copy 21 of 17th 1212

MS copy 21 of 17th 1212

MS copy 21 of 17th 1212

MS copy 21 of 17th 1212





1892.0 St. John's the Baptist  
1896.1 " " " " " "  
1896.2 " " " " " "  
1896.3 " " " " " "  
1896.4 " " " " " "

1896.5 " " " " " "  
1896.6 " " " " " "  
1896.7 " " " " " "  
1896.8 " " " " " "  
1896.9 " " " " " "

1896.10 " " " " " "  
1896.11 " " " " " "  
1896.12 " " " " " "  
1896.13 " " " " " "  
1896.14 " " " " " "

1896.15 " " " " " "  
1896.16 " " " " " "  
1896.17 " " " " " "  
1896.18 " " " " " "  
1896.19 " " " " " "

1896.20 " " " " " "  
1896.21 " " " " " "  
1896.22 " " " " " "  
1896.23 " " " " " "  
1896.24 " " " " " "





1770  
 1771  
 1772  
 1773  
 1774  
 1775  
 1776  
 1777  
 1778  
 1779  
 1780  
 1781  
 1782  
 1783  
 1784  
 1785  
 1786  
 1787  
 1788  
 1789  
 1790  
 1791  
 1792  
 1793  
 1794  
 1795  
 1796  
 1797  
 1798  
 1799  
 1800

1801  
 1802  
 1803  
 1804  
 1805  
 1806  
 1807  
 1808  
 1809  
 1810  
 1811  
 1812  
 1813  
 1814  
 1815  
 1816  
 1817  
 1818  
 1819  
 1820







ca 15 m. south of road  
 ca 10-150  
 near river in high place  
 from the first landing on  
 the lower river  
 across the river  
 on the north side  
 of the river  
 on the north side  
 of the river

Dec 6  
~~Dec 8 (land near river)~~  
 from first landing  
 Dec 5 (Kulmberg) on  
 the river  
 Dec 8 (near river)  
 on the river  
 Dec 5 (near river)  
 on the river  
 Dec 8 (near river)  
 on the river  
 Dec 5 (near river)  
 on the river  
 Dec 8 (near river)  
 on the river

Over the ...  
...  
...  
...

...  
...  
...  
...

Col 100.8 reverse mounted  
 699.2. 2nd. 1/4 mounted no m.  
 697.2 " 2nd & 3rd  
 696.0 " 2nd of 3rd  
 695.0 " 2nd of 3rd  
 694.0 " 2nd of 3rd  
 693.0 " 2nd of 3rd  
 692.0 " 2nd of 3rd  
 691.2 " 2nd of 3rd  
 690.0 " 2nd of 3rd  
 689.0 " 2nd of 3rd  
 688.0 " 2nd of 3rd  
 687.0 " 2nd of 3rd  
 686.0 " 2nd of 3rd  
 685.0 " 2nd of 3rd  
 684.0 " 2nd of 3rd  
 683.5 " 2nd of 3rd

21  
 22  
 23  
 24  
 25  
 26  
 27  
 28  
 29  
 30  
 31  
 32  
 33  
 34  
 35  
 36  
 37  
 38  
 39  
 40  
 41  
 42  
 43  
 44  
 45  
 46  
 47  
 48  
 49  
 50

683.5  
 684.0  
 685.0  
 686.0  
 687.0  
 688.0  
 689.0  
 690.0  
 691.2  
 692.0  
 693.0  
 694.0  
 695.0  
 696.0  
 697.2  
 698.0  
 699.2  
 700.0



13. VIII. 1890. H. von 1890  
 Markt. Straß. 10.5 h. 2.30 p.  
 16.2  
 16.15 x 16.04  
 16.30  
 16.40  
 17.20  
 18.20  
 19.20  
 20.20  
 21.20  
 22.20  
 23.20  
 24.20  
 25.20  
 26.20  
 27.20  
 28.20  
 29.20  
 30.20  
 31.20  
 32.20  
 33.20  
 34.20  
 35.20  
 36.20  
 37.20  
 38.20  
 39.20  
 40.20  
 41.20  
 42.20  
 43.20  
 44.20  
 45.20  
 46.20  
 47.20  
 48.20  
 49.20  
 50.20  
 51.20  
 52.20  
 53.20  
 54.20  
 55.20  
 56.20  
 57.20  
 58.20  
 59.20  
 60.20  
 61.20  
 62.20  
 63.20  
 64.20  
 65.20  
 66.20  
 67.20  
 68.20  
 69.20  
 70.20  
 71.20  
 72.20  
 73.20  
 74.20  
 75.20  
 76.20  
 77.20  
 78.20  
 79.20  
 80.20  
 81.20  
 82.20  
 83.20  
 84.20  
 85.20  
 86.20  
 87.20  
 88.20  
 89.20  
 90.20  
 91.20  
 92.20  
 93.20  
 94.20  
 95.20  
 96.20  
 97.20  
 98.20  
 99.20  
 100.20

1890. H. von 1890  
 Markt. Straß. 10.5 h. 2.30 p.  
 16.2  
 16.15 x 16.04  
 16.30  
 16.40  
 17.20  
 18.20  
 19.20  
 20.20  
 21.20  
 22.20  
 23.20  
 24.20  
 25.20  
 26.20  
 27.20  
 28.20  
 29.20  
 30.20  
 31.20  
 32.20  
 33.20  
 34.20  
 35.20  
 36.20  
 37.20  
 38.20  
 39.20  
 40.20  
 41.20  
 42.20  
 43.20  
 44.20  
 45.20  
 46.20  
 47.20  
 48.20  
 49.20  
 50.20  
 51.20  
 52.20  
 53.20  
 54.20  
 55.20  
 56.20  
 57.20  
 58.20  
 59.20  
 60.20  
 61.20  
 62.20  
 63.20  
 64.20  
 65.20  
 66.20  
 67.20  
 68.20  
 69.20  
 70.20  
 71.20  
 72.20  
 73.20  
 74.20  
 75.20  
 76.20  
 77.20  
 78.20  
 79.20  
 80.20  
 81.20  
 82.20  
 83.20  
 84.20  
 85.20  
 86.20  
 87.20  
 88.20  
 89.20  
 90.20  
 91.20  
 92.20  
 93.20  
 94.20  
 95.20  
 96.20  
 97.20  
 98.20  
 99.20  
 100.20

1890. H. von 1890  
 Markt. Straß. 10.5 h. 2.30 p.  
 16.2  
 16.15 x 16.04  
 16.30  
 16.40  
 17.20  
 18.20  
 19.20  
 20.20  
 21.20  
 22.20  
 23.20  
 24.20  
 25.20  
 26.20  
 27.20  
 28.20  
 29.20  
 30.20  
 31.20  
 32.20  
 33.20  
 34.20  
 35.20  
 36.20  
 37.20  
 38.20  
 39.20  
 40.20  
 41.20  
 42.20  
 43.20  
 44.20  
 45.20  
 46.20  
 47.20  
 48.20  
 49.20  
 50.20  
 51.20  
 52.20  
 53.20  
 54.20  
 55.20  
 56.20  
 57.20  
 58.20  
 59.20  
 60.20  
 61.20  
 62.20  
 63.20  
 64.20  
 65.20  
 66.20  
 67.20  
 68.20  
 69.20  
 70.20  
 71.20  
 72.20  
 73.20  
 74.20  
 75.20  
 76.20  
 77.20  
 78.20  
 79.20  
 80.20  
 81.20  
 82.20  
 83.20  
 84.20  
 85.20  
 86.20  
 87.20  
 88.20  
 89.20  
 90.20  
 91.20  
 92.20  
 93.20  
 94.20  
 95.20  
 96.20  
 97.20  
 98.20  
 99.20  
 100.20

XXX Mr. James G. Thompson  
 1111 Broadway  
 New York City  
 1891

Dear Mr. Thompson:  
 I have the pleasure to  
 acknowledge the receipt  
 of your check for  
 \$100.00 on the 10th  
 inst.

Weg. N. VIII K. P. 207.2

7. 28. 0. 0

Polknoten K. Zingelstein 698.5

I Horn 696.8

II Horn 693.5

III K. 691.8 (a. 826)

IV K. 689.4

V " 688.8

VI " 687.2

IV K. 687.2

IV K. 684.2

IV K. 679.3

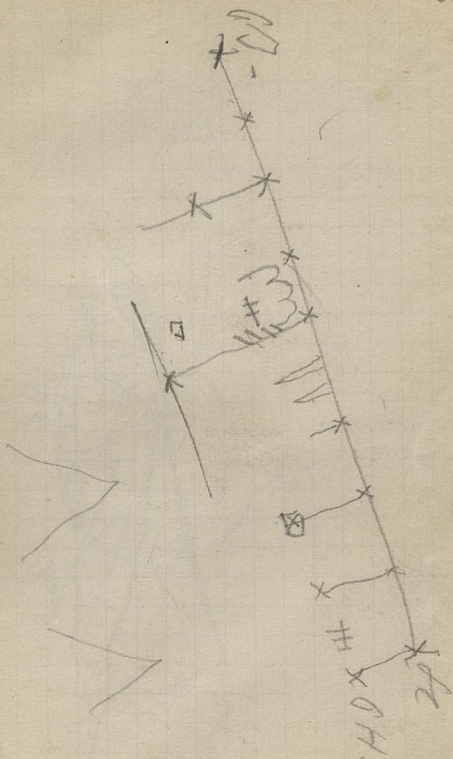
IV K. 670.9

IV K. 666.1

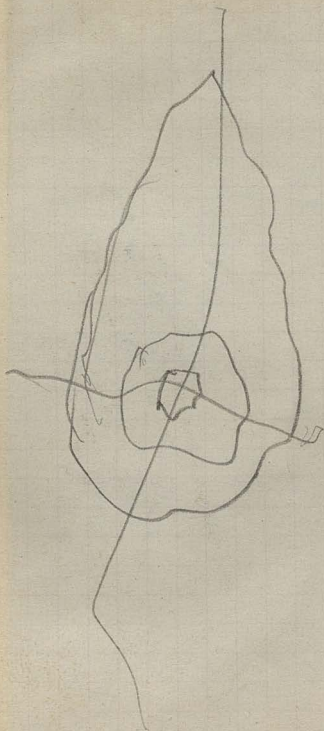
IV K. 666.1

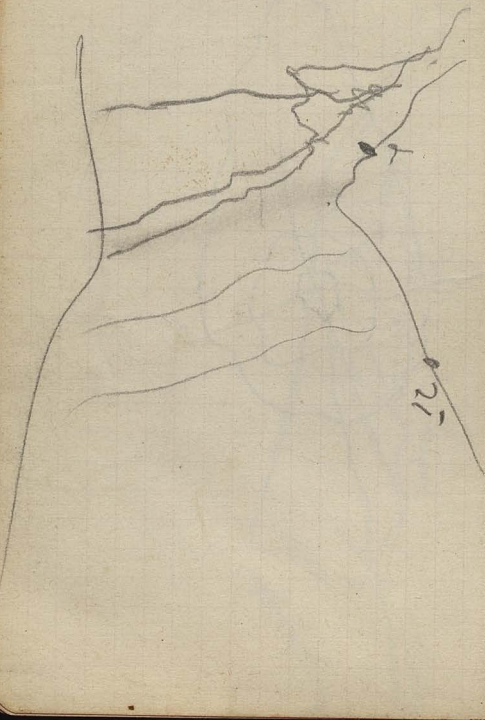
IV K. 659.6

IV K. 659.6









027

