

INCVNABVLA

Qu

2674

kat.komj



Dawna sygnatura Kalend. 289. Oprawiono w r. 1935.

Inc. Qu. 2674

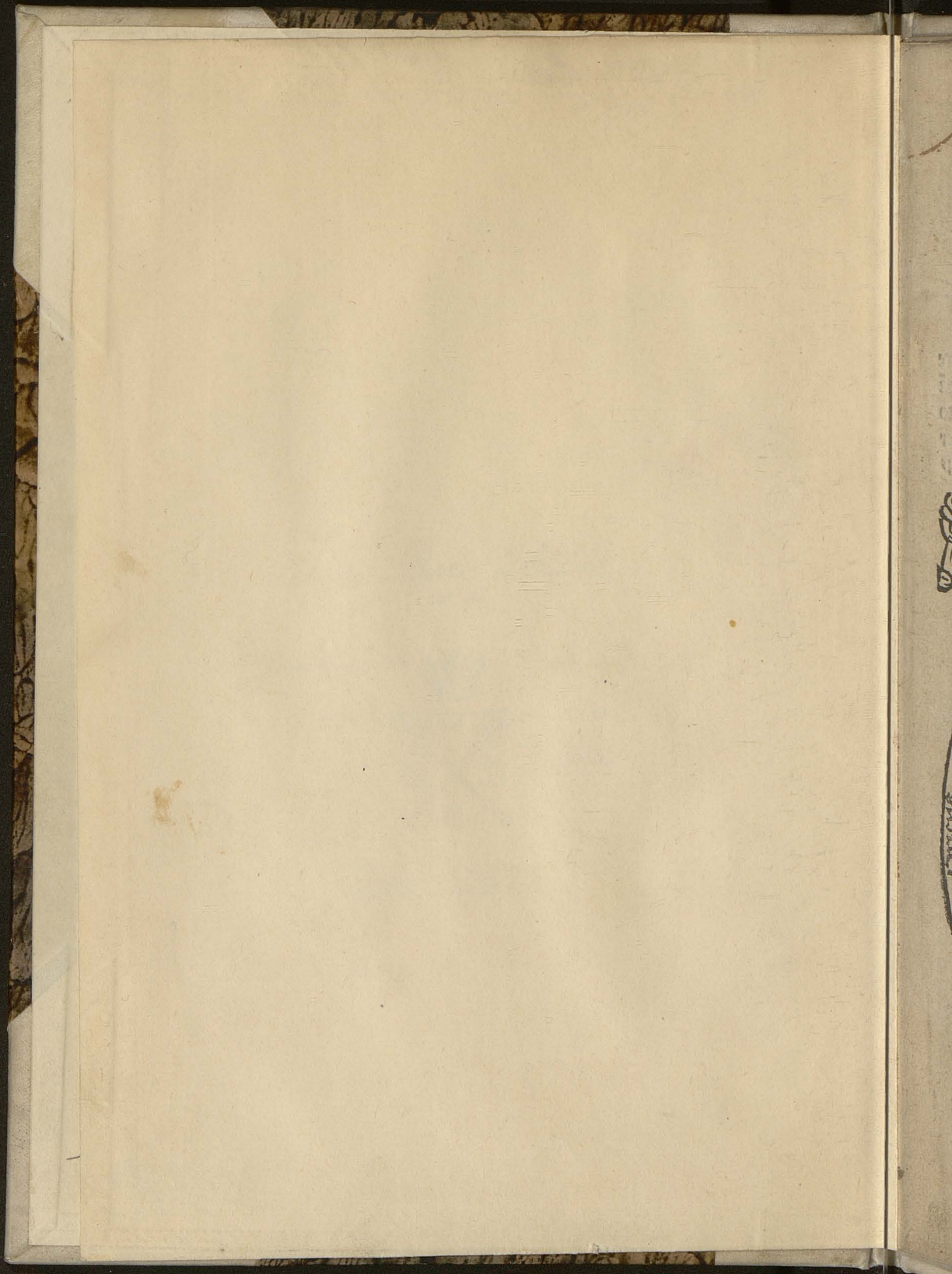
Bibl. Jag.



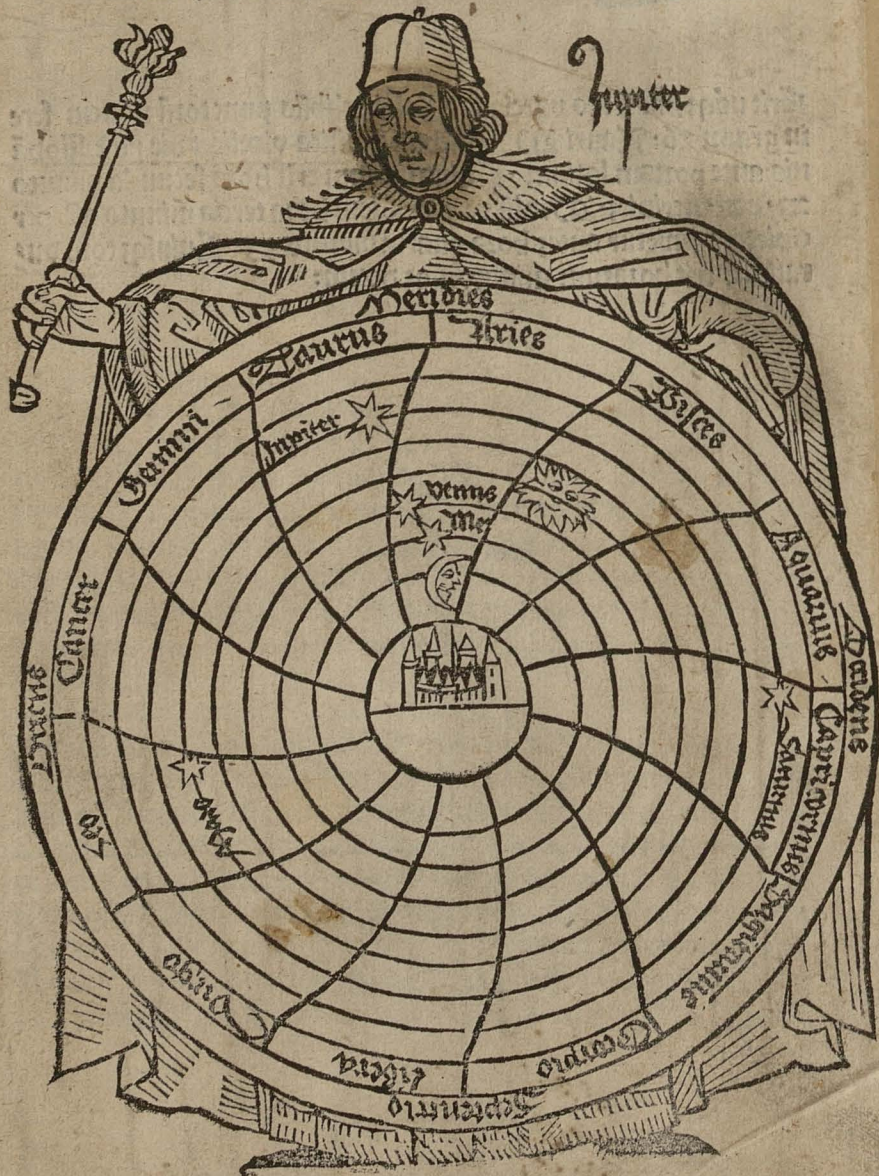
T. 13 (444)

gg. IV. 11.

Schreiber 5437 = Schramm XIII.43.
= Birkhenneger - Ameisen. 72 =
Exhibits V 24



Practica Baccalaurii Johā
nis Cracouiensis de halsfurt.



Erit naq; hoc anno partialis Solis eclipsis punctoꝝ nouem fere
in gradu 26. Lauri May diebus dominica videlicet die post Jobā
nis ante portam latinaz. Cuius incium erit hora secunda minuto
23. post meridiez. Mediū vero eiusdem hora tertia minuto 28. per
cipietur. Finietur autez hora quarta minuto 33. Cuiusq; tota dur
ratio. 2. erit horarum minutoꝝq; decem:

BIBLIOTHECA
VNIuersitatis
CRACOVENSIS

2

**Pronosticon p anno xpi millesio
quadringentesimononogesioprimo.
currēte baccalaurū Johānis craco
uiensis de hasfurt.**

Magnus ille opifex cuius pulchritudinem sol et luna admirātur
coelū varijs adornauit ornāmētis: tanq̄ lucernis fulgētissimis/ de
putauitq; ei a primordiali formatōe diuersas v̄tutes et opa: ne ocio
villesceret. Sed et vt magis suo afflatu ista inferiora sub cōcauo or
bis lune in cōtinua ḡnatiōe transmutatiōe ve teneret/ vt inquit ar
stotiles phozā princeps/ Inferiorē hunc mundū supiori necessitate
quadā esse ligatū vt et inde eius tota virtus gubernetur. Extendit
itaq; sūmus astripotēs coelū orbibus luce clarissima virtuteq; incō
prehēsa fulgētibus: vnūquēq; suis adornās stellulis: sicuti pellem
vt eis inspectis aīa rōnalis raperetur: assurgeretq; in tantā admi
rationē: Inqua quidē cōtēplaretur naturā coeli. Ab om̄i proflus
corruptōe ac permutatiōe alienotā/ spericitatē orbū: ordinē magni
tudine ingentē/ mirā pulchritudine/ cōnectionē motū/ dispositiōz
stellarū adinfiē/ earū tarditatez: velocitate: ortū et occasum. Et ex
earū frequenti inspectiōe assurgere in tantā cognitionē earundez et
resistere eis quo ad earū veneficū influxū et p̄munire ceteros ne ma
lificus eorū influx⁹ eis nocumētū ingerat / Inquit nāq; p̄tholome⁹
princeps astronomozū in sapiencijs almagesti/ Sapiēs vir dom̄ia
bitur astris Et alio in loco idē Optimus astrologus multū malū p
hibere poterit qd̄ scdm̄ stellas venturū est cū earū naturā p̄stuerit.
Sic em̄ p̄mūniet eū cui malū futurū est vt posset illud pati/ Itēq;
albertus magn⁹ de⁹ creator coeli et terre coelū sup̄ elemēta cōstituit
vt motu suo generaret corrūperet: et cōseruaret cūcta. Quid nāq;
plato rerū diuinārū peritissimus timei secūdo nil fieri cuius ortus a
legittima causa et rōne nō procedat Et iā galienus phicorū prim⁹
Regimē inferioris mundi et ipsius ordinē fieri p̄ter stellas/ Quis
vero harū mutationū princeps certe vti est astrologozū sūia Maius

luminare cū admīculo aliarū stellarū| Est enī sol anima mōdi: cor cōe
 li: spiritus nature: et totius machine ornamentū: pater dōzū: hoīm
 qz: oīm qz viuēciū: vita hermate testante in p̄ma sui cōiloquij: **Qua**
 ppter primus in iudicijs p̄ponēdus ē. Lum enī p̄noſticon cōponē
 velim p̄ncipiū a sole capiā. Necessē est dum is scz primū p̄ctū arie
 tis signi intrabit vt astrologozū anim⁹ oīm p̄fert. Necnō cū ante
 introitū vernalis signi cū mīori cojē lumie. a quibus plurima in mū
 do vidimus accīa euētura| **Qua** ppter p̄ anno M^o.cccc^o.lxxxix^o
 currēte| Sol primo applicabit p̄cto arietis vñdecima marcij. die|
 boza z minuto 23| post meridiē diebus equatis| ascendēte in circulo
 bemisperiū 21. gradu leonis| quo tpe sol octauū obtinebit domum|
Saturnus in sexta labitur **Jupiter** coeli mediū perlustrat| **Mars**
 domū laboris ingredit| **Venus** mercurius cū luna lōge itineris do
 mū obsedent| Et p̄ quas quidē stellas erraticas et earū ad se inficez
 coptus plurima in hoc mūdo accīa vidimus futura| ob quā rē ego
 baccalaurius **Jobānes de bassfurt** mot⁹| deliberauī ad laudē cūctis
 potētis. oīm qz parētis sūmi honorē. Nec nō ad gloriā sue intemes
 rate matris marie| vulgīqz cōis utilitatē effect⁹ p̄ hoc anno christi
 currēte qui a superioribus dependēt corpibus| in christi ihu nomine
Juxta antiquozū huius artis sideralis experiētias explanare| diuul
 gareqz in eum qui sequitur modum.

Differencia prima de anni domino

Dimissis reuolutiōibus ac p̄fectiōibus magnarū cōiūctionū ac do
 mīo orbis magni| diuisoreqz ei⁹| que sat hui⁹ scie mḡis cognita sūt
 dignū duxi p̄allare huius anni doīm| Nā vt ex plurimozū in scia
 siderali exptozū potui recolligere s̄nta vtputa auzoris nouē iudicū.
 Necnō et p̄holomei scdo quadrimēbri eiusqz cōmētatoze habi| q̄
 quidē pl⁹ ceteris rōnabilior videt qui et oēs nō solū gubernatozem
 anni ex introitu solis in arietē| ymmo et ex figura p̄uentiōis ipsū p̄
 cedēt diiudicat. **Quia** igit **Jupiter** ille benignissim⁹ in figura in
 troitali ab angulū in quo deuoluit p̄senciā ne dū potēs| ymmo et in
 loco p̄uentiōis dignitatib⁹ nō expers **Mercuri⁹** p̄terea in introitali et
 p̄uēcionalī potenciā bz nō modicā tū rōne loci ascendētis| tū deniqz
 ex p̄te signi in quo **Jupiter** p̄cipalis h⁹ anni dñs in venitū| quē et
 ipse suis benignissimis iradeat radiatiōibus **Dico** iouē amicū na

3
his gues labores ac infirmitates habebūt corpis | p̄ter ex opposito
saturni | In hyeme v̄o gaudebūt cū filijs | carceres tñ et labores eis
hoc tpe ob q̄draturā martis cū eorū significatoze in domo laboris
existētes minātur | Sitqz sūmus pōtifer hoc āno sollicitus quoniā
Mars estatis et hyemis t̄pib⁹ eis littigia ⁊ inimicicias testificat Sū
musqz etiā pontifex vna cū suis cardinalib⁹ ac ceru religiosozū plu
rima hoc āno inter p̄ncipes et reges sedabit bella ac discordias mi
tigat | Probat ex ioue i medio celi Solē ac martē benigne intues)

Turci vero hoc anno fortunati erūt

et bellicosi edificijs ac domibus ruina minātes defastātes qz res im
mobiles igne p̄ter eorū significatozē qui fortis existit in signo igneo
quod et maxime ipsos inflāmaret nisi benignus ille Iupiter a loco
forti ipsū mitigaret Estatis autē tpe p̄spirationē faciūt cōtra xp̄ianos
p̄ter quadratū martis ad christianozū significatozē / qui et ābo tūc
t̄pis in domū ceciderūt carceris ac laboris qd et detrimentū et nocu
mentū a turcis significabit xp̄ianis | In autūpno timeāt in itinētib⁹
Infirmitates ne incurrāt p̄ter m̄rtis quadratū | In hyeme v̄o all
qui faciūt itinera. aliqui v̄o infirmitates inueniūt graues circa crura
et humeros que ex natura frigida et sicca profiliunt:)

Orna sexta de statu regū et p̄ncipiū

P̄ncipibus ac regib⁹ hoc anno minātur bella p̄ter oppositū mare
et saturni vti voluit albumasar Aliqui etiā ex eis mortiferas aut ali
as gues inueniūt infirmitates p̄ter ābos eorū significatozes quoz
vn⁹ in locū cecidit infirmitatis Alter vero in domū mortis | Ad qd
qdā nō parz facit regia ista stella q̄ defectū sui lumis in domo mort
patit | In estate v̄o statu habebūt dep̄ssū | Nā si oriētales bellū icepe
rint ab occidētalibus ac septētrionalibus vincūt et deprimūtur In
autūpno itinera timeāt | In hyeme v̄o erūt fortes honorabuntqz a
p̄lo p̄ter lunā trino saturnū aspiciēs mediūqz celi obsedēs | Isto
nāqz anno aliq̄ reges aut magnati vitā finitūt aut grauis p̄cula in
eorū paciunt corpibus Stat⁹ autē seuerissimi impatoris friderici in
anni p̄ncipio mediocritis erit plurimūqz diliget suos: legatos pluri
mos mittet pac et cōcordia hoc tpe ei a bobemis p̄signat p̄ trinū
leonis ad e⁹ significatozē aut t̄pe tūc t̄pis tētabit i ire p̄cordiā cū ips

Sitq; sollicitus hoc tpe ppter eius significatozē qui in domū cecidit infirmitatis ne pericula scenciet corporis/ que quidē et quasi oibus in āni quartis ab astris minātur. Tpe vero estatis aliqui principes aut reges erga ipsū remtabūt bella et hoc ei aburgundis ac bolonijs Sillr et vngarijs presignat Minime tñ in ipso pualebūt/ ppter Ilorum significatores qui loca celi obtinēt debilia qđ quidē tamē ei ab ipsis oculatā p̄signabit inuidiā In autūpno vero si vita ei supra stet plus fortunabit. In hieme vero inueniet solacia. et multū diliger suos: ipsosq; muneribus dotabit.)

Orna septia de statu militū et horū

qui martis noturam participant

Milites/ stipēdarij medicine doctozes Cirurgici/ hoies ferro laborantes ac rubeo a natura colozē vtētes fortes erūt animi Tracūdi Bellicosi vtilitatē sperātes in rebus subterratis in quibus tñ decē priōes inueniūt. Militēsq; hoc anno plurima incendia minātur ac bella. In estate vero aliqui se associabunt p̄lo. Aliqui vero ei resistant plurimosq; de suis incarcerabūt. In autūpno vero plurima faciūt itinera In quibus tamē corporis obpressiōes et nocumenta timere debēt. Eis etiā succedūt substācie ac dignitates et honozes a regibus. fortunāq; habebūt in eozū agris pratis stagnis et hīs silibus. In hyeme vero ppter eozū significatozē in domo infirmitatis aliqui ex eis infirmitates graues habebunt.)

Differencia octaua de studentibus

et arcium liberalium magistris

Arcium liberaliū magister alijq; ingenio laborātes vtputa sunt astronomi. arithmetici. rethozes. logici. sortilegi. diuinatores. Neomantici. Ciromāntici. alchimiste. hoies deniq; a natura flauum diligentes colozē in anni exordio vitā habebūt p̄spērā. fortunāq; plurimi autē ex hīs lubricis vtūtur actib; mulierū cōgaudēt amplexu. Itinera cū eis p̄sumentes Aut alias itinera faciētes Nobilibus ac cōi populo multū adherētes/ Tpe vero estatis plurimisq; laborib; detineant. Bellū et lis inter eos semiat. In mercancijs vero aliqui ex his lucrū inueniūt Aliqui vero ex p̄rijs actibus

et sciencia thesaurū sibi cumulāt Multūq; in honore tractabūt
a filijs hominū In autūpno vero et hyeme multa habebūt solacia
cū mulieribus bñ cōcordabunt : a quib; plurimā habebūt solacia et
bona se in instrumētis exercēt musicalibus a quib; et negligencijs
plurimū inueniunt eorum in studijs

Mercatores vero In anni principio lucrū spera-
bunt in pānis p̄tiosissimis ad rubedinē declinātes/ Mercāciaq; fer-
ri eis bona/ In estate vero cauere debēt ne detinētur carcerib; aut
quia tūc t̄pis graues inueniūt labores/ In aquaticis vero lucrū
sperabūt/ In hyeme vero leta exercēt opera Hospitales erūt mere-
tricijs adherēbūt actib; plurimiq; ex eis vxores ducūt religiosaq;
opa faciunt Mercācia eis bona itinera eis periculosa p̄sperumq;
hyemis t̄pe successū habebūt a regibus atq; diuitibus deceptiōes in-
ueniunt occultas)

Differēcia nona de venere subiectis

Mulieres puelle Cantores. citariste. pictores. tubicinatores. toci-
latores. sericorū. pannorū. textores. pulsatores. instrumētōrū musi-
caliū. Hū nāq; in anni exordio p̄pter eorū significatozē retrogradū
statū aliquo mō inueniūt laboriosū Tempus q; estatis inueniunt
suspectū ex quadratu maioris infortune quē ad eorū habet signifi-
catozē Carcerib; aliqui ex his detineātur infirmitatibusq; grauentur
Sint nāq; hoc anno mulieres p̄uise quoniā astra eis mala minantē
multa Et hoc sūmit ex eo q; in domo significatozis earū lumīaria de-
fectū paciūtur quē et abe infortune suis inficiūt radijs Mitigabūt
q; tamē eis hec mala aliquātulū p̄pter benignū aspectū Iouis ad
significatozē eclipsis/ Tum etiā p̄pter aspectū amīcables quos abe
in fortune ad significatozē eius paciūt/ Autūpnus vero eis affert
tēpus letabundū cōuiujs ac solacijs plenū quod et gelid; hyemis
eis negabit in inime)

Or̄na decia de religiosis et deo serui-

entib; Religiosi et deo seruīetes om̄esq; antiqui/ S̄r cerdones

Autores Melancolicū | Sepulchrorū fossores | Terreꝝ cultores In
p̄ma quarta anni infirmitates habebūt ḡues a natura calida pliliē
tes | litigiū et discordia inter ipsos seminat Plurimi ex eis virā hoc
anno finiūt | In estate vero statū inueniunt eleuatū Itinera pluri
ma querūt et p̄spera ob religiositatis causā p̄ficiis theologicisq; ar
tibus incūbunt aliqui ex eis sompniōzū erunt interpres librozūq; sa
crozum expositoꝝ | Autūpnus vero eis nociu⁹ gelidū p̄pter saturni
nū | h̄yems vero eis magis p̄sper et letabunda reperitur | His autē vl
timis quadris itinera minantur eis suspecta)

Differēcia vndecima de statu vulgi

Vulgus seu p̄plus cōmunis hoc anno statum inueniet decluē In
tribus nāq; p̄mis quartis graua paciētur pericula Itā infirmita
tes calidas v̄puta tpe veris Siliter et estatis Itā frigidās et siccās
puta | autūpni et hoc maxime in capite | cruribus | et corde Plurimi
etiā ex his carceres aut alias ḡues labores mīme subterfugiūt Sta
tū vero h̄yemis tpe melioꝝ inuentūt Sit demū et suspectus Ne
mars ei incendia ad eozū adducat domus seu impedimēta eis fa
ciet eozū in bonis et hoc maxime eis tēpoꝝ p̄signat autūpni)

Drā xij. de quibusdā regnis & terris

Regnū polonte maioris ex parte signi nō paucas paciētur calum
nas | grauesq; labores ac ritas in anni exordio habebit | eleuabiturq;
in eo vnus supra alterū eū deprimēdo | Estatis vero tpe infirmita
tes habebit frigidos | Autūpni vero tpe p̄plus regni hutus in domi
b⁹ gaudebit disciplinas querat h̄yems v̄o eis statū portēdit eleua
tū et p̄sperū : tū admixtū aliqua deceptiōe quā saturnus suo quar
to adducet ¶ Polonia autē mīor terra cracouiensis dicta in anni
p̄ncipio erit animosa fortunata itinera faciēs in quo p̄sperū ha
bebit successū | Eritq; odiosa p̄lo maioris polonte Infirmitatesq;
eis minātur | Estatisq; tpe atq; autūpni itinera faciūt bellicosa erit
defastationē terrarū p̄sumat | H̄yemis vero tpe aliq̄b⁹ infirmitatib⁹
quassant Timeat deniq; tota polonia hoc anno Nā infirmitates
pestifere ei minātur ob hoc sit sollicita regimie bono vt mediāte illo

intraſt astroꝝ ſubterfugere valeat.

Bohemie inclitū regnū. Tpe veris ab intrane
is se timeat bellis ne
ſmplicabit Sanitate cuſtodiat ne in ea rōne Saturni ſignū eozū op
poſito inficiēs dāpna percipiet/ In eſtate vō itinera breuia ei piculoſa
legatos ſeu nūccios ne mittat/ Quoniā mala portabūt In autūpno
habebit lucrū in mercācijs pteptioneſqz ſenciet in viris et mulieribus
In hyeme vero vitā cuſtodiat Tamē ppter ſignū erectiōis eiufdem
regni Silr et ſignū cōſtūctiōis regni In principio aut erit aīoſū et ex
altatū Mars tñ ſuo qdratu eis bella ab occidentali b^o et ſeptētrionali
b^o pſignat Et ob iſta ſigna iā dicta homines iſti^o regni et plurimi car
ceribus et vinculis detineātur.

Hoies vero regni vngarie Plurimis b^o āno
torquent laborib^o
ppter eozū ſignificatoꝝ q̄ i locū/ cecidit debile ad caputqz draconis qd
quidē et carceres eis pſignat/ Jupiter tñ qui fortis eſt altera in ſigū
ra liberqz a malis eos a talib^o ſubterfugē teſtat Tamē quia idē debis
lis cū cauda et cū ſtellis de maris natura eos oīno nō liberos eſſe ſig
nificat a belloꝝ aduētū et hoc maxime eis eſtat pſignat tpe cū mars
ad regni ſignificatoꝝ peſſimos ſuos piciet radios/ infirmitateſqz Au
tūpnus eis adducet Quieti hoc anno mīme erūt ppter eozū ſignifica
toꝝ qui q̄ſi in oīnibus quartis in domū laboris ſe locauit Silr de
morania et aliquib^o partib^o aſtrie verſus vngariā dicitur.

Terra inclita bruffie Veris tpe erit inſtabilis co
gitabit prim bella prim pa
cē ex parte ſigni ei^o qd prim in ſignū cecidit bonū partim et in malū
plus tamē hoc āno pacifica erit quā litigioſa fortuna ac lucra pluriā
colliget ex aq̄s Autūpn^o vō cū hyeme labores ac infirmitates ei mināt:

De ſtatu t̄re ſcraconie. bauarie. ſueuie
Hoies hīs in terris veris tpe ſtatū habebunt pſperū itinera breuia
faciūt/ nūccios et legatos ad loca mittūt aliena/ Mādāta noua inue
niūt Aut inueterata renouāt/ diligētqz plurimū ſuos in ſiſq̄s fortunā
inueniēt In eſtate ſilr et autūpno ſint pauſe quoniā infirmitates et la
bores aſtra eis mināt/ Mars temū eis hoc āno inēdia plurima b^o

testat: Multūq; se hoc anno plus harū terrarū cruciabit thesaurus
et alia oculta queriās Sed tñ maris deceptio; nequaq; subterfugi
ant et inde vacui recedent.

De misna et lagonia.

Popul⁹ harū terrarū hoc anno inquiet⁹ erit. **Mars** in itinera do eis suo qd ratu malū pñgnat/
discordia q; inter ipsos erit maxime ex pte nobilitū **Estatis** vō tpe in
ter ipsos multe fiūt susurratioēs ac discordie vt ex his fortasse aliqui
nocumētū capiāt | **Vix** q; fit vt hoc āno infirmitates subffugiāt; mor
tiferas **Sintq;** solliciti tpe veris qm̄ opposit⁹ imarx eis i eoz bonis
Incendia pñgnat.

Drā xij. de statu minerarū

Aurū hoc anno ascēdit in p̄cio: pluribusq; in locis vbi prius auri erit copia **Itā** anno
p̄cipit⁹ penuria ppter ei⁹ significatozē debile hoc āno existēte | **Argentū**
vero hoc āno bene crescit a q̄ homines vtilitatē et pfectū habebūt | **Plū**
būq; hoc āno stabit mediocriter: plurimūq; eleuabit in p̄cio pbat ex
eius significatozē q̄ se estatis et autūpni t̄pib⁹ **Sitr** et h̄yemis in loca
collocavit forcia | **Ferriq;** copia hoc āno | cōpetētisq; p̄cij | **Lupzū** boni
erit p̄cij: crescitq; mediocriter | **Stāni** demū hoc āno mediocritas p̄cipit⁹

Drā xij. de aduētū Ignitarū imp̄ssionū et portentū
si qua accidēt in elementis.

Ignite imp̄ssiones a marte: cū aliquo āno dominū habuerit **Et** loca
p̄iūctionū magnarū q̄rto aut opposito aspexerit: aut ipse idē dñs: hoz
fuerit: locozū euenire dicūt qd̄ quidē āno hoc in eo eueniri nequit | qua
ppter ānus nē salu⁹ erit ab ignitis imp̄ssionib⁹ **Nisi** mars in leone | sa
turn⁹ in aq̄rio tpe veris aliqd̄ adducere velit suo opposito | **Portenta**
aut alia speciuocare elemētozū graue ē cū ipia variabilia sūt et tñsmu
tabilia ad inficē **Nā** ex facili cā vt loquūt p̄hi illud qd̄ in pluuia trāssi
re dz aut in rozem ex facili aut v̄ etū transmutatu causa:)

Drā xv. de imp̄ssioib⁹ aeris et statu toel⁹ āni in p̄mis q̄litate
b⁹ p̄ij/ caliditate/ frigiditate/ hūiditate/ et siccitate

Bñalis stat⁹ āni toel⁹ in q̄litate⁹ p̄mis variatio; ac mutatio; ex lo
ue/ mercurio/ saturnoq; accipiat | **Cū** itaq; iupiter cū mercurio domūz
habebūt āni cū participatioē | **Saturni** dico hūc ānū tēperatū fore de
climatē ad v̄tositatē in p̄cipio sui cū aliq̄li caliditate eo qd̄ oēs plane

6

te pene in sigis deuoluūt aereis igneisq; Adunatio tñ altarū stellarū
ipsū amū imutabūt iā ad frigiditatē sic q̄ estas estas aliquid et sic
citas anni diminuetur:

Arā xvi. de generali dispositiōe quatuor tpm̄ anni | puta ve
ris | estatis | autūpni | et hyemis. Ver qui ab
ariete iniciū sūmūt iuxta mētionē astrologorū et p̄cipue p̄tholomei se
cūdo q̄ d̄scripti ca. x. Qualis nāq; tūc tpm̄ vire? inuēta fuerit planeta
rū | talē mīme negari quis p̄t in esse huic tpm̄ Quia itaq; planete plus
domiū obtinētes hui? tpm̄ qui sūt et planete vētorū in signis q; in vē
tis aeris | calidifq; tpm̄ hoc veris ad vētositatē cū aliquali caliditate
declināt | q̄d quidē etiā attestat p̄ partē aeris in vēto in signo vētoso | c̄
quidā signi et dñs vētosus appellat | Ver tñ iuxta eius naturā cū ad
mīculo signozū humidozū: que tpe veris oēs q̄si obsecant angulos ad
aliq̄lē declinabit hūiditatē q̄ tñ pauca erit p̄pter martē et iouē existen
C Estas vō p̄t ei? significatores ad vētositatē tib? i signis calidis
ac humiditate p̄mixto aliq̄li frigiditate p̄pter saturnū gelidū qui tunc
tpm̄ sibi domū regiā occupauit declinabit | Mars tñ mercuriū aspici
ens Sitr et mercuri? soli iūct? nō nulla excitabūt tonitrua c̄ horuz
C Autūpu? vō a libra iniciū sūmēs declinabit ad frigi | C canōib? C
ditatē cū siccitate p̄pter tñ planetā cui luna applicat? p̄uentiōnē erit
aliquātulū calid? in principio sui cū quadā hūiditate | Probat quidē
et hoc ex p̄ticiōe indozū in locū cadēs calidū qui ē et planete calidi: C
C Hyems aut erit frigid? satis cū vētorū afflatib? p̄ticularia tñ test
monta ipi? frigiditatē aliq̄ mō mitigabūt niues nō nullas adducē do

Differētia xvii. de duodecim mēsibus anni | tam in
generali q̄ speciali. Noua luna
februarij q̄ erit ij. Ra p? ephie mane hora viij: minuto lā. p̄pter e? sig
nificatorē p̄cipalē sax̄ frigida erit: mars tñ cū venere ipsā ad niuosi
tatē tñsmutā | C Plena lūa e? dēq; erit i die p̄uersiōtis pauli p? meri
diē ho. viij. mi. xxvi. ad vētositatē declinabit p̄mixta frigiditati niuali.
C Dies circūsiōis dñi et p? oppositū p̄t marā cū venē dies mutati
ui p̄niue. ij. Ra post circūsiōis frigiditas cōpetēs post q̄ fortasse ij: et
ij. Ra sequitur remissio aure que inducit niuez | Epiphānie domini et
p? p̄pter applicatiōnē lune cū stellis nebulosis de natura marā et lune

Sifr et iouis nix cū aliquali flatu vētorū/ Domīca et sabatho post epl
phanie frigiditas magna ob pūctionē solis cū saturno Et mutationez
mercurij ad signū frigidū et post illā frigiditatē tertia feria sequit plur
rib⁹ in locis nix aut vent⁹/ Octava ephie aut ppe humiditas nivalis/
Domīca añ anthony et ppe hos dies ppter mutationē saturni in sig
nū et lune applicationē stellis nebulosis et pliadibus frigiditas nivalis
Sabatho aut domīca post fabiani ppter māstionē lune humidā Sifr
et partē pluuie humiditas nivalis/ Scda feria post apparebit frigiditas
Quarta feria post pauli flat⁹ ventozū Sabatho aut domīca p⁹
puerionis pauli vent⁹ et plurib⁹ in locis nix/ In pfecto et festo purifi
catis nix aut status ventozū In locis tamē calidis humiditas Do
mīca post agade frigiditas.

Qua luna marcū

que erit in pfecto appolonie post
meridiē hora viij. minuto liij. multū erit ventosa. Saturn⁹ tamē in
āgulo abissi ptestat frigiditatē nivalē Plēna lūa e⁹ q̄ erit i die mathe
añ meridiē hora x. minuto xxxvi. ad tpanciā cū vētositate declinabit

Dies Appolonie aut scolastice humiditas alicui nivalis Saba
tho añ valētini mutatio aeris iā ad humiditatē iā ad ven
tositate Valentini frigiditas alicui nivalis ppter tñ mercurij in do
mo iouis excitabūt vēti qui plurib⁹ in locis in crastinū tardabūt Se
xta feria post valētini loc⁹ lune vētositatē p̄signat cū aliquali humidi
tate Domīca invocavit frigiditas vētosa alicui niuosa q̄ tñ frigiditas
aliqb⁹ in locis pl⁹ ad noctē se extēdit Petri vētus mathe obscuritas
aeris Sabatho aut domīca remiscere vēt⁹ pmixt⁹ frigiditate Scda
Ra post remiscere loc⁹ lune testat humiditatē alicui nivalē A tertia fe
ria vsqz ad atlanti dies mutatiui iā ad humiditatē iā vētositatē Do
mīca oculi ppter appertionē saturni cū sole frigiditas perpetue virgi
nis circa noctem fortasse ventus:)

Qua luna aprilis Que erit v. Ra añ gregorij ma
ne hora ix. minuto xliij. ad ven
tositate cū humiditate declinabit Plēna luna eiusdē q̄ erit in die anūc
ciatis marie post meridiē hora x. minuto xxxvij. ad tēperie aeris fe
stinabit ppter saturnū tamē in medio celi eleuabunt in ea vēti frigidit.)

7

Dies Quarta Ra añ gregorij mutatio p humiditate in pfecto gregorij nubilofitas aeris alicui cū humiditate niuali Do-
 mica letare vēr⁹ fortis cū frigore alicui vō pluuia que tñ alicui trās-
 fert in diē sequētē eo q̄ luna tūc t̄pis applicat pliadib⁹ Tercia Ra p⁹
 letare vēr⁹ A sexta Ra vsqz ad benedicti inclusue dies mutatiui p
 obscuritate aeris et humiditate alicui niuali Quarta Ra añ anūccia-
 tiōis marie obmutatōnē mercurij in signū luneqz stellis nebulofis
 applicatiōz obscuritas aeris alicui humiditas niualis Anūcciationis
 marie vēr⁹/ palmarū aut post locus lune testat pluuia niualē aut ma-
 xime nubes Tercia Ra post palmarū ventus aut aeris turbulencia
 Sexta Ra p⁹ palmarū nubes pluuiose In pfecto pasce frigiditas
 alicui niualis humiditas Tercia aut liij Ra p⁹ pasce hūiditas leuis

Quona luna maij q̄ erit vi. feria post
 ambrosij post meridiē hora xi. minuto xlv. ad caliditatē declinabit
 In principio tñ eo q̄ luna applicat mercurio mouebūtur vēr⁹ plena
 luna eiusdēqz erit domica p⁹ gregorij ante meridiē hora viij. minuto
 nullo humiditates nō modicas in principio sibi vēdicat. Postea vō
 testimonia particularia ipsam im mutabunt.

Dies Sabatho post pasce vēr⁹ Scda Ra añ Tiburcij vētus
 plurib⁹ in locis humiditas q̄ alicui tardabit in sequētē
 diē Tiburcij humiditas aut ppe Sabatho post tiburcij remissio in
 caliditate ppter saturnū ad solē aut admin⁹ nubes Tercia Ra post va-
 leriani vēr⁹ Et quarta post ex quarto solis cū saturno frigiditas p̄sig-
 nat Quinta Ra añ gregorij vēr⁹ aut pluuia tardabit tamē aliquib⁹
 in locis in crastinū In die gregorij loc⁹ lune cū pte pluuie humiditatē
 testatur domica p⁹ gregorij locus lune testat pluuia aut aerē nubilo-
 sū In die marcij vētus vitalis aut ppe turbatio aure Philippi et sa-
 cobi mutatio pluuia alicui trāsferit in sequētē ppter tamē sepationē
 lune a marie ad nouē aliquibus in locis audiunt tonitrua Crucis
 humiditas Silr Jobānis ante portā aut admin⁹ aeris obscuritas.

Quona luna iunij Que erit domica p⁹ Jobānis añ
 portā latinā hora .i. minuto liij.
 aduentositatē calidā declinabit ppter principalē significatōz in massi-
 one humida et ipse humidus aliquat sētū humiditas cū tonitruis et

eboruscationib⁹ et i ea fit eclipsi. erit ij. Ra
 añ vrbani post meridiē hora ij. minuto nouillunio
 habebit cōplexionē: Dies pon. iohā. us' in locis
 audient tonitrua aut admin⁹ vēti. e et ps plu-
 uie hūiditate p̄signat aut vētus Dom⁹ zophie aut p̄e audietur
 tonitrua A vi. Ra vsqz ad p̄tbecostes. siue dies mutatiui p̄vēt
 aut pluuijs eo q̄ mercuri⁹ applicat p̄ladib⁹ Et iupiter stellis nebulo-
 sis: ij. Ra añ vrbani vēt⁹ Urbani obscuritas aeris cū vētis aut plu-
 uijs. Sexta Ra p⁹ vrbani nubilositas aeris Domica et ij. Ra post
 vrbani pluuiā et p̄e hos dies plurib⁹ in locis tonitrua p̄cipiet. sexta
 Ra et sabatho añ bonifacij mutatio ad nubes aut pluuiā Bonifacij
 pluuiā alicui ḡnuloſa aut vētoſa alicui trāſerit in sequētē. C Noua
 lūa iulij q̄ erit ij. Ra p⁹ bonifacij mane ho. iij. mi. xxxvij. ad vētoſi-
 tatē p̄mixta hūiditate declinabit. Plena luna eiusdēqz fit ij. Ra ante
 Iohānis baptiste p⁹ meridiē hora x. minuto xvij. fere eandē habebit
 dispositionē sui nouilunij. Dies Quarta Ra p⁹ bonifacij nu-
 bes pluuiose Sabatho añ vii vsqz ad viii dies mutatiui iā ad nubes
 iā ad hūiditatē Sabat⁹. vii loc⁹ lune Silr pars pluuię et mer-
 curi⁹ applicās p̄ladibus vētus aut pluuiā adducēt. Secda Ra p⁹ v̄ti
 aut circa alicui tonitrua Iohānis baptiste aut post vēt⁹ aut pluuiā
 alicui v̄o añcedit pluuiā Domica añ petri et pauli aut circa dies mu-
 tatiui iā ad tonitrua forcia iā ad humidā ventositatē In crastino pe-
 tri et pauli nubilositas aeris Visitatiōis marie mutatio pluuiā aut
 C Noua lūa augusti q̄ erit iij. Ra C vēt ij. Ra p⁹ visitatiōis ma. vēt⁹
 p⁹ visitatiōis ma. p⁹ meridiē hora vii. mi. xxxii. ad t̄paciā declinabit
 cū alicui hūiditate Plena luna eiusdēqz erit in p̄festo marie magdale-
 ne hora v. minuto xix. habebit eandē naturā cū nouillunio
 Dies Quarta Ra p⁹ visitatiōis ma. nubilositas aeris alicui plu-
 uia q̄ alicui añcedit et alicui sequit. Secda Ra añ margarethe pluuiā
 aut vēt⁹. margarethe dies nubiloſa A die diuisionis app̄ozū vsqz ad
 iij. feriā n⁹ alexij dies mutatiui iā p̄vēt iā hūiditate et plurib⁹ in lo-
 cis audiet tonitrua h̄bis in dieb⁹ iij. Ra p⁹ alexij vēt⁹ cū hūiditate aut
 admin⁹ nubes alicui v̄o tardabit in sequētē A maria magdalena vsqz
 ad iacobi dies mutatiui pluuiā v. aut vi. Ra p⁹ iacobi vēt⁹ aut plu-

8.

uia Doica p^o iacobi caliditas alicui aut circa tonitrua.
C Noua luna septēbris q̄ erit in p̄fecto sexti (tas aut cuius rubiū.)
 pape añ meridiē hora x. minuto xij. erit t̄pate hūida et v̄etosa. Plena
 luna ei^o dēqz erit Ra vi. p^o assūptōis marie post meridiē hora i. mi.
 xxxii. erit satis serena et t̄pata cū ventositatib⁹ admixta.)
In p̄fecto sexti pluua aut v̄et^o ij. Ra post sexti v̄et.
 laurēcij v̄eti fortes cū pluua et obscuritate aeris. vi. Ra p^o laurencij
 mutatio p̄ pluua et v̄et. Doica vsqz ad iij. feriā post assūptōis marie
 dies mutatiui p̄ pluuis et v̄et et durabūt alicui pluuię vsqz ad pleni
 lunij. Doica añ bartholomei luna cū pliadib⁹ pluua p̄signat et for
 tasse illa die aut circa audiēt tonitrua forcia cū choruscationib⁹ **I**n p̄
 fecto et festo iohānis turbatio aure alicui pluua iij. Ra p^o iohānis le
 uis pluua sentitur cū vento **I**n crastino egidij ventus.)
C Noua luna octobris Que erit sabatho p^o egidij p^o hora xij
 minuto xxv. erit v̄etosa p̄mixta hūiditate. Plena luna eiusdē q̄ erit sa
 batho p^o crucis p^o meridiē hora xij. minuto ix. erit t̄pata. p̄ter tñ sa
 tñ forte tūc t̄p̄s mouebit in fine ad frigiditatē. **D**ies Doica
 p^o egidij v̄et^o in p̄fecto et festo natiuit^o pluua cū v̄eto Doica
 p^o natiuitat^o ma: nubes cū vento. A. ij. Ra vsqz ad sabathū p^o crucis
 dies mutatiui p̄ pluua et vento mathei pluua Sabatho aut doica p^o
 mathei pluua aut v̄et^o fortis alicui t̄ssert in diē sequētē **I**n crastino
 michabelis tenebrositas aeris Remigij pluua aut nubliuz ascensus.
C Noua luna nouēbris Que erit in p̄fecto frāncisci p^o meridiē hora ij.
 mi. ix. ad hūiditatē v̄etosa p̄mixta frigiditate declinabit. Plena luna
 ei^o dē q̄ erit ij. Ra p^o galli hora ij. mi. iij. fere eandē habebit naturam
 cū nouilunio.) **D**ies frāncisci obscuritas aeris Ra vsqz ad ij
 Ra p^o dionisi dies mutatiui p̄ pluua necn̄ et v̄et e. inferiora mu
 tāt signa v. Ra et vi. sabatho p^o dionisi mutatio ad pluuiā alicui his
 in dieb⁹ v̄eti p̄cipit fortissimi galli frigiditas. lucie hūiditas aut aeris
 obscuritas sabatho aut doica añ crispini v̄et^o cū pluuis v̄et^o alicui t̄ssert
 fert in sequētē Simons et iude mutatio puētis pluuiosis que alicui
 se extēdit. crastinū Sabatho p^o simonis et iude obscuritas aeris.)
C Noua luna decēbris q̄ erit in crastino oim scōrū mane hora ij. mi.
 xxi. ventorū ad flatū declinabit frigidū. Plena luna eiusdē q̄ erit iij.

Ra añ elizabeth Mane hora vi. minuto vii. ad vētositatē Et in fine
ad niualē declinabit humiditatem

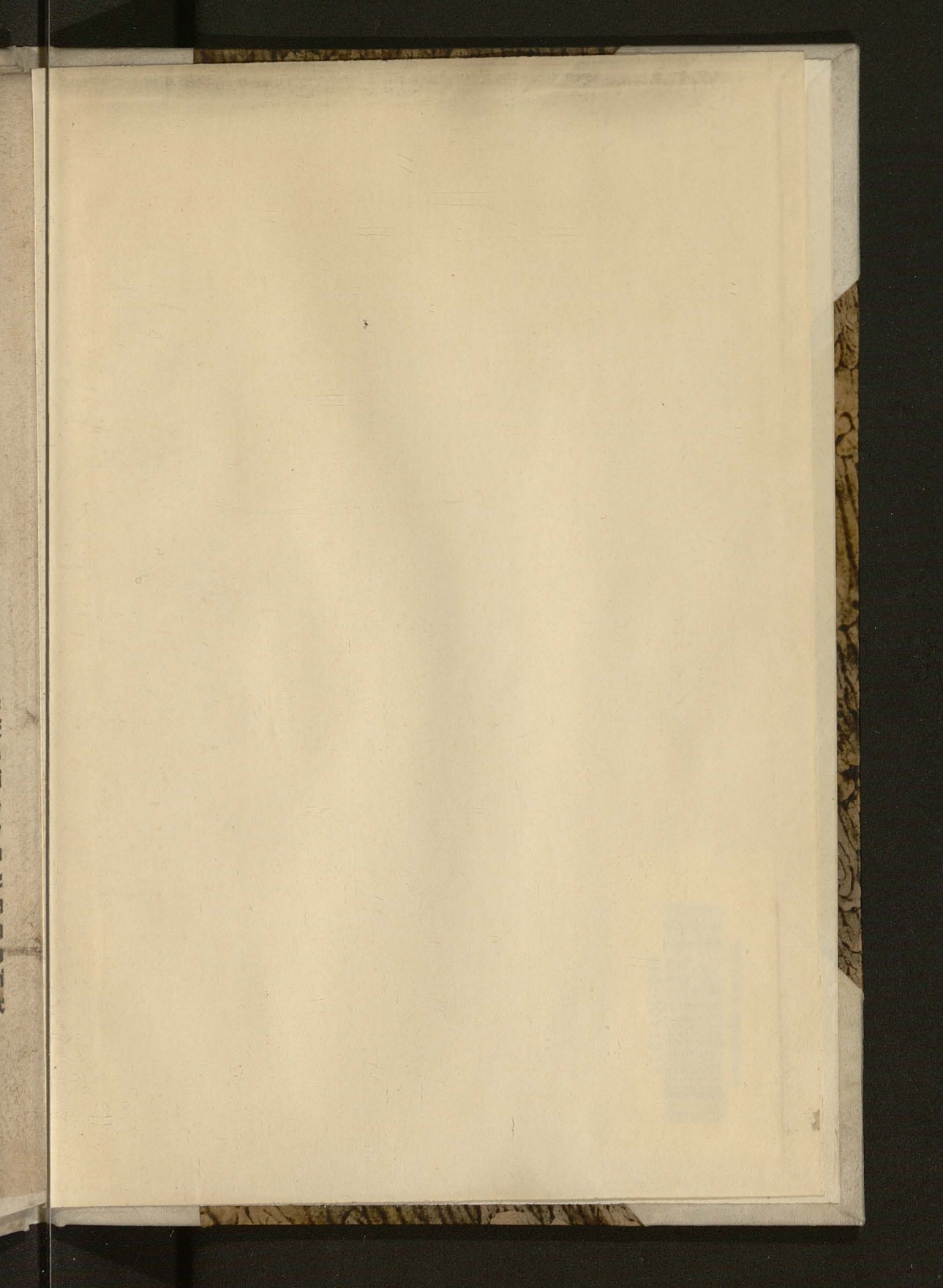
Dies In crastino oim sāctorū frigiditas et in locis pl⁹ frigidis
humiditas apparebit niualis Sexta Ra post oim sancto
rū vēt⁹ alicui humiditas Domica leonbardi obscuritas aure cū frigi
ditate A vi Ra vsqz ad dñcā p⁹ martini mutatio pvetis et hūditate
et alicui pcpies his in dieb⁹ nix ij. Ra p⁹ bzeccij hūditas In pfecto
elizabeth flat⁹ vētorū fort⁹: postq̄ plurib⁹ in locis cadz nix q̄ alicui tar
dat i ipsū festū in crastino elizabet frigiditas cū hūditate alicui niuali
Circa clemēti notabilis mutatio pventis et humiditate niuali In
crastino katherine vēt⁹ Scda Ra post vsqz ad andree inclusiue mu
ratio p humiditate alicui niuali.

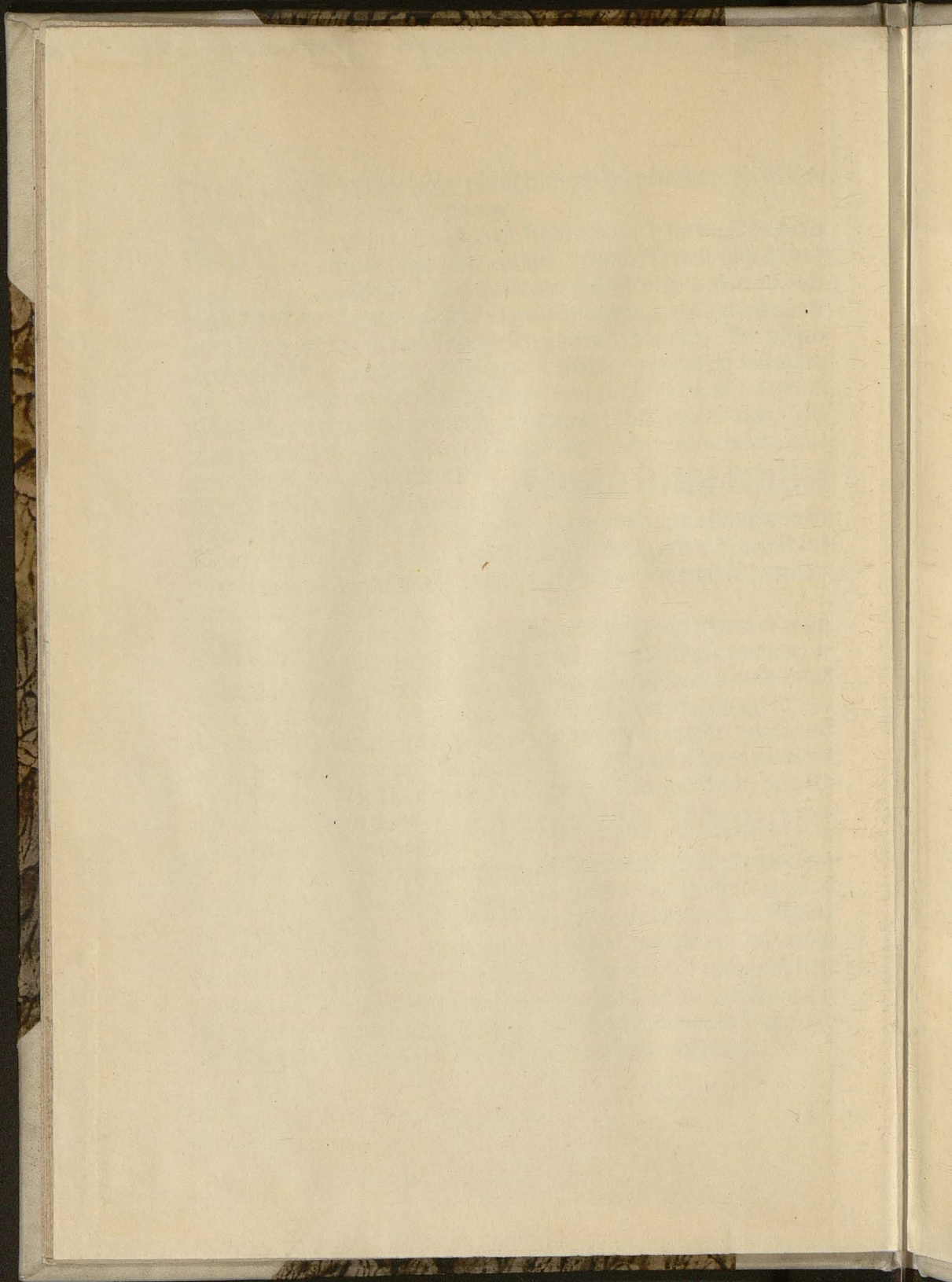
Qua luna embu
linalis decembris. Que erit v.
Ra añ barbare post meridiē hora ij. minuto xvij. ppter saturnum in
medio celi satis erit frigidā Plena luna eiusdēqz erit v. Ra post lu
cle post meridiē hora xij. minuto iij. ad frigiditatē permixtā humidi
tate niuali declinabit.

Dies Sexta Ra añ barbare vētus A domica barbare vsqz ad
pceptiōis marie dies mutatiui ad ventositatē pmixta hu
miditate niuali Domica p⁹ pceptiōis frigiditas cū niue. lucie nix aut
aeris obscuritas Sabatho p⁹ lucie hūditas alicui niualis qd̄ tñ ali
cui añcedit Domica añ thome flat⁹ vētorū fort⁹ et frigid⁹ quā sequit̄
nix Circa diē thome nix aut pluuia Sexta Ra añ natalis mutatio
pvet frigidis Natalis nix alicui trāffert in diē stephani aut humidi
tas aliqua saltem aeris.

Qua lūa Januārū
Que erit in pfecto siluestri
p⁹ meridiē hora xij. minuto xxxvij. ad frigiditatē ppter principalem
significatorē declinabit.

Conclusio **Dies** In pfecto siluestri obscuritas ae
ris alicui nix siluestri dies frigida
Mltaqz mala in hoc pnostico inseui accū
hoib⁹ in mdo euētura ex reglis atiqz h⁹ sideralis scie collecta q̄ non
semp vti astrozū vis nobis minat̄ eueniūt Sed ad nutum illius qui
cū ab eterno pveidit disponitqz. Cui sit laus et honor in secula. Ex
actū lipozē āno dñi 1491. currite: quinto ydus octebats zc.





Biblioteka Jagiellońska



51010011311

