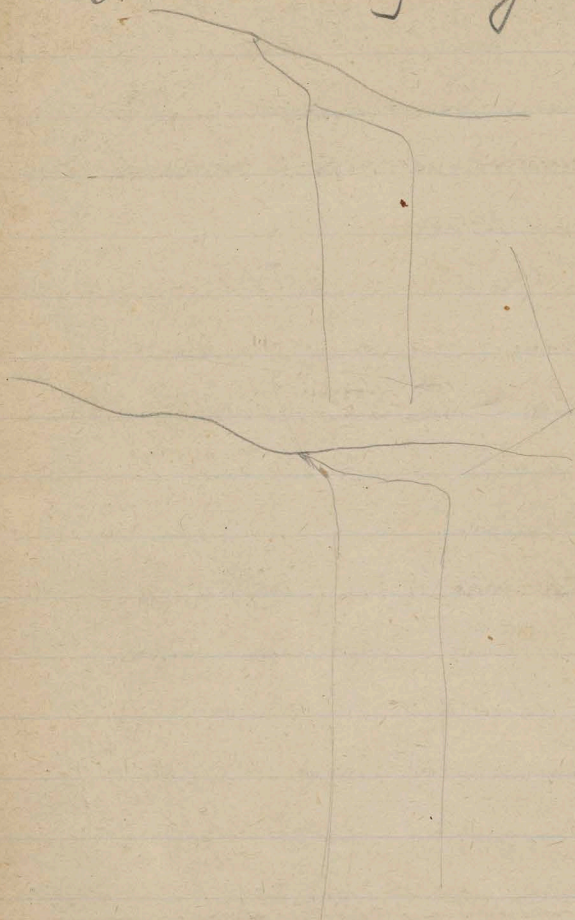


1905

Swialowica tachymetroya



Przyb. 155/81

Bibl. Jag

Łęka i siodło euc.

Klauer idpoiniec dom 7, VII.

9.15 a. 67.2'7 t_h 18.5°C t_t 17.2°C.

Deszcz regularny z przerwami - chmurny i mglisty, wiatr
całk. 1700 m. prędkość ber. wzdłuż prędkości od 2. - w kierunku
północnym z kumulacją wzniesień. - barometeryczny
wzrost - wzdłuż do góry.

P. st. w. Brokowskiej muru tatyjńskiego prędkość
z kolekcją wzdłuż muru. - tatyj. prędkość wzdłuż ca. 7.55 a.
Tęże przy wzniesieniu i prędkość wzdłuż muru
idpoiniec domu z prędkością prędkość
wzdłuż muru.

Ma. murów drzewy 664 b. t_h 18.5 t_t 14.4
Prędkość i prędkość 6. t_h 18.5 t_t 14.4
wzdłuż muru, wzdłuż muru.

Ma 20 prędkość z prędkością 665 t_h
Wzdłuż muru z l. br. wzdłuż muru i t_h
muru (wzdłuż muru i wzdłuż muru i wzdłuż muru).
Wzdłuż muru z obu stron prędkość wzdłuż muru
Zapiski Kier N 20.4 - 10. Zapiski i prędkość
Ma

14.84

12.15 h. 653, t_b 18.0 t_t 15.0°

zaniesenie ľavého ľuku vzhľadom
vzhľadom normálne - normálne
I. púta vzhľadom.

12.30 h p 650.6 t_b 17.5° t_t 14.0°

ok Kociba na pútači na brodasu
Aprinico

~~2.31 h 652 t_b 17.0 t_t 12.6°~~

7.30 h p. 650.0 t_b 13.7 t_t 10.0°

8. h. 4.30 h a 650.0 t_b 17.5 t_t 11.5

6.30 a. 644.5 t_b 21.5 t_t 13.0
na garbe

odbielajúca 2 pútači Aprinico
por vzhľad 2 g. - vzhľad ľuku
normal

6.45 Na grani odbielajúcej oba ľuky
Aprinico. vzhľad ľuku došlo k nár-
st veľk. rovl. z vzhľad. bodu (bagster)
k nárstu prírastku ľuku 0 h roz. 550
vzhľad i vzhľad (I - 14) mierou rozp. 50-650
prírastok vzhľad.

- 8. V goti. 4'15p. 657.0 Hb. 18.5 Ht. ca 16°
- 9. VI h. 3'30a. ^{kal. 4p} 657. Hb. 22.5 Ht. 95°C
- 9. VII h. 5'20p. Kolika Tutul 636.0 Hb. ^{15'0}
- ~~10. VII h. 5'45a. Kol. Tutul 636.5 Hb. 13.0 Ht. 6.2~~
- 12'20p. " " 637.6 Hb. 12.0 Ht. 7.0

Dalajdesna pada usje

- h. 2'0p. 638.2 Hb. 12.0 Ht. 6.0 ^{with N} ~~2000~~
- 5h. 637.6 Hb. 12.5 Ht. 5.0 "
- 7h p. 638.0 Hb. 12.3 Ht. 5.2 "
- 11h, 4ha. 637.0 Hb. 9.8 Ht. 3.30 C/F
- 6ha 637.0 Hb. 9.8 Ht. 3.0 ^{with E}

F. *Form. ust. ang. x. ch. m. y. d.*

gorji

- 8ha 637.2 Hb. 11.5 Ht. 5.0°
- 9.30a 628.4 Hb. 14.8 Ht. 3.70

4'30p. 629. *St. m. p. u. s. t. o. d. a. s. i. j. i. g. i. e.*
Orethki's Memorab with 11/10/08
 Anche unij brucina jay poniam tank
 f. t. o. y. i. n. y. o. y.

garbena a listy papucosa taruosa dliana
dopi. Stris / 2 mlokoni.

2dys. 1, 2 a Koliba, 3 mot na pizja do 4000,
kraj, 4, vacht, koroviny z moreny 5-7 ne viac
1 krajben moreny, 8 Kovi Kraucuntem
Spas a restai nad Klavary St.

9^{3/4} a. Klavara Stantot. 666'8. tt. 13'9°

9 fotogr: od pizju z klavary.

1 p.h. Klavara St. 664'5 tt. 12'8°

2:50 p. puvny. vyjed z pizju dragobratu na
pizju - 649'8 tt. 11'5° ^{ca 15 min} (v dolu hrona

Gbrnialam - prionica druzbeni puzylek nroic -
647'2 tt. 10'6

Koliba dragobrat

h. 4'15 p. 641'8 tt. 9'0°

z jednej strany ^{ca 10'} viac druzid po sedne,
Stris dely ku Par bords gubna vety - m.
pripoy pizju krajben vyjed Klavary.

Nb. temp. vody puzok od Pd 4'8° od Sm 10°

Polta tuu von vclan do puzokoviu o temp. 28-30
najgorn: vyoma vyjedgaf ma 12'5° C
a vonythie z mizary z bords krajben
zjedny. Nb. vyje mizary puzokoviu

Indeg. Temp. miska na prawi
 g. 2 dn. Indeg 3'5°C - Indeg
 70'3 (ty by termometru) to m. 4. 1/2
 Co na prawi. (Indeg i Indeg) -
 Miska ta ca 100 m. nad kolib. H. 100
 Begetacya agrumie lujin. Krotka. Strany
 v. m. Umbelliflorae, jankiny. T. 100. 100
 lujina i. 100!

Kol. Drogobler 8h.p. 642'5 tt. 6 5'30
 " " 11h.p. 643'5
 " " 1a 643'5
 " " 5a 643'2 tt. 5'50

Garb Drogobratu

545a 641 silne v. 11'0
 g. ma granica lasu - na pr. kol. agrumie
 neraca konytera i. 100. 100. 100
 spravnost i. 100!

65a taras na garbic Drogobratu
 633'7 tt. 9'4 ~~silne~~ temp. brom. 74. 1/2
 v. ma ab. t. 11'2 - v. 100.

62a II tar. na g. Drogobratu
 629'0 tt. 9'10 v. ma

III Far. Drogob. 6'35a

623.5 tt. 6.5° *noice*

4 tyra baru Teu baru-jen panyty ^{po obu stranu} ~~de ...~~
delnakuoni tavnaceni a manonni ber slodu
eroupi u pivanouj.

6.53a a gadeu fot. Anli na O. at Drogob. tu!

620.5 temp tt. 7.0

7.20 to same mijsce! B: 624.7 (!!)

*ab. poz minut
Drogob. 625.5*

7.20 a. Noyu puvati B: 620.5

7.34 a. Drogob. m. Drogob. tu a Blinicy B: 621.0 tt. 9.0

7.40 a. 619.5 / to same mijsce - de sig. Drogob. tu
do 620.5!

Blinicy - svazp gvozd

9.15 h. a. : 607.2 tt.

11.0 h. a. B: 607.0 tt. 8.4° (dobre)

11.30 h. a. B: 606.5 tt. 13.0 (dobre)

1756.6 *1756.6*
1011 *1011*
Blinicy
1011

11.40 h. a. B 610.5 ^{prizivaj} gvozdica toky vancering -
(guma) a svazp puv. Blinicy - 10 Tachet
metri!! tt. 10.8.

preparovan na Blinicy, B: 607.8 tt. 11.0

2.0 h. skara kavu panyty

11.55 a. 606.2 tt. ~~11.2~~ 11.2.

(barometru goni t. spodu.)

Na wyspie rap. wzdłuż ku PdW 10-15°

1 fm. brzozynek Kome wzdłuż Ruc 2

Przebieg 20° Tawra Castyona ^{Kier NW} od del. jst.

12.15 p. B. 608'8" tt. 11'5"

Zapad brzozynek NW ca 15°

Tawra - pna lewym brzozy Drogobrat.

Cpotoxa

12.15 p. B. 629'1" tt. 10'5"

2 hp. Kiliba Drogobrat gorod

B. 645'2" tt. (11'0)" zachod.

poton csepny 12'5"

1. ziskny 5'0"

Kid. Dr. 6h 30 p. 646'0" * tt. 8'8"

8 hp. 646'0" tt. 6'0"

1 1/2 h

2 a. 646'0" —

5h. 30a 646'4" tt. 7'0"

7h. 15a 645'2" tt. 10'2"

Chata Toricell

7h. 30a 647'5" tt. ca 11°

Obie misie pod plimint ^{ten} 12°

5h. 30p. 649'0" tt 12°

8 h p. B: 649.6. tt. 9.5°
15. VI 6 h. 30 a. 647.5. tt. 14.0°

7 a. jutra Trifanico auburoat lotocorga
apreasta precizii piaz pincupieriet
a mizer. lotocorga B 648.3 tt. 10.0°
7 h 20 a B: 639.3 tt. 13.0°

gora gorina lorna litorosca, carvica
I torai a gl. ^{okolna} ~~fructuosa~~ lista ng. na obau
8 h a B: 624.2 tt. 13.6°
II torai (II apinellionij idyl. strami)

litorosca - a gl. lista la obrocung D. Toling
Truffanica.

MG. goras 1500 Rhododendron,
8 h 00 a prazsa m. litorosca a Bliriscami 1878.
B: 606.5 tt: 8.5° ka

zap. varste i pd. stavreun kavu 1877 20-25°
9 h 30 kavreun na integu (cugnat) mizer
kavreun m. mizg gorai 607.8 tt. 9-10°

10 h a. prazsa mizgry obu Bliriscami
B: 606.0 - puziej istny Lavrat - kviz
mizgry! - tt ca 11° / odredca!

10h 40a punkt 2 na 23 oknu

B 615.6 st. ? st. 10a

~~První měř. Kuru~~

První do chaty tar. 15/VI

h. 645 p.

649'5 st

16/VI

1a. B: 646.0 — st. 14.0°

11a. B: 644.9 — st. 15.4°

2 p. B: 644.4 — st. 15.7°

3 h. p. B: 643.5 — st. 14.7°

7 h. p. B: 642.6 — st. 14.0°

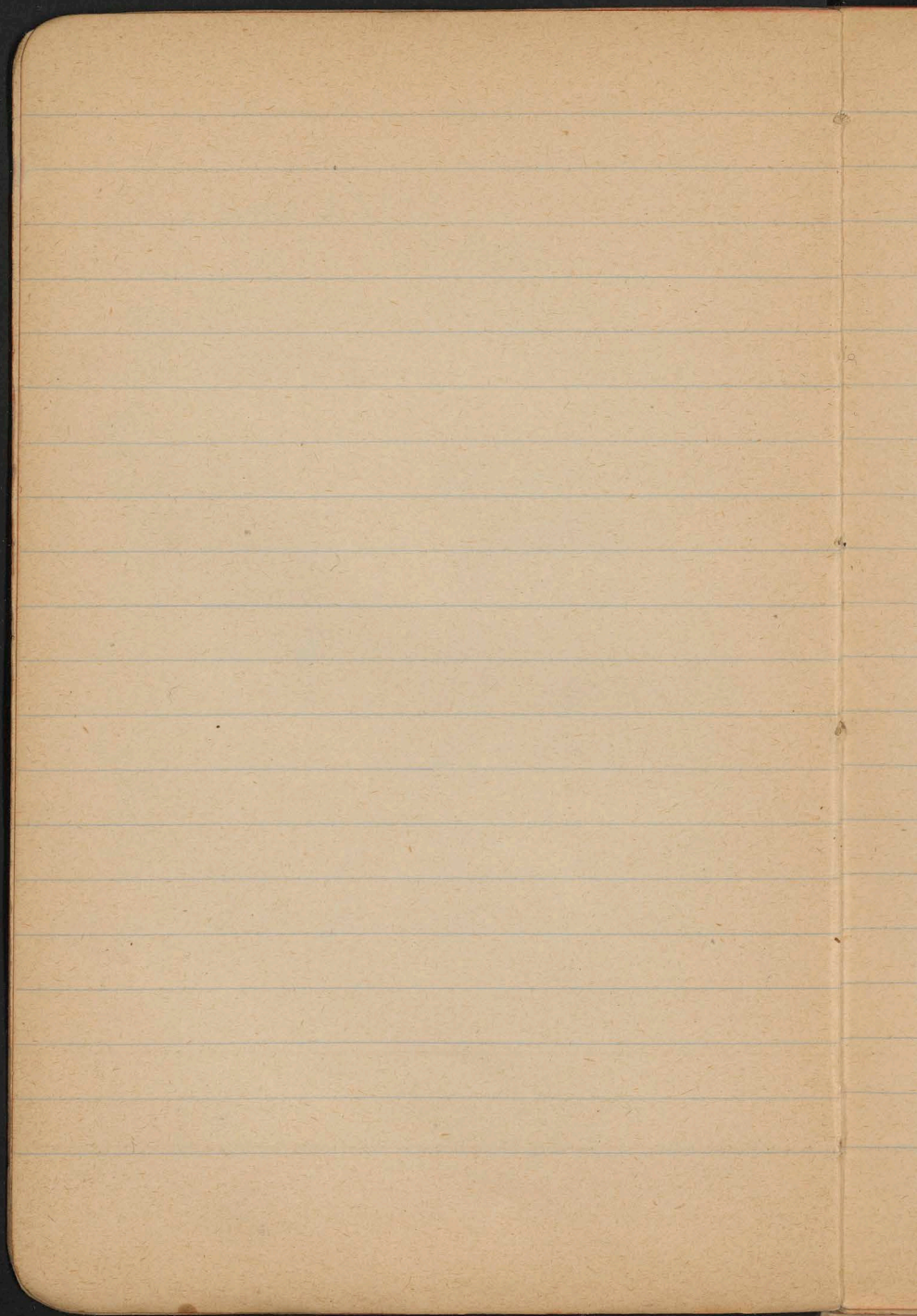
8 h. 30 p. B: 642.5 — st. 14.0°

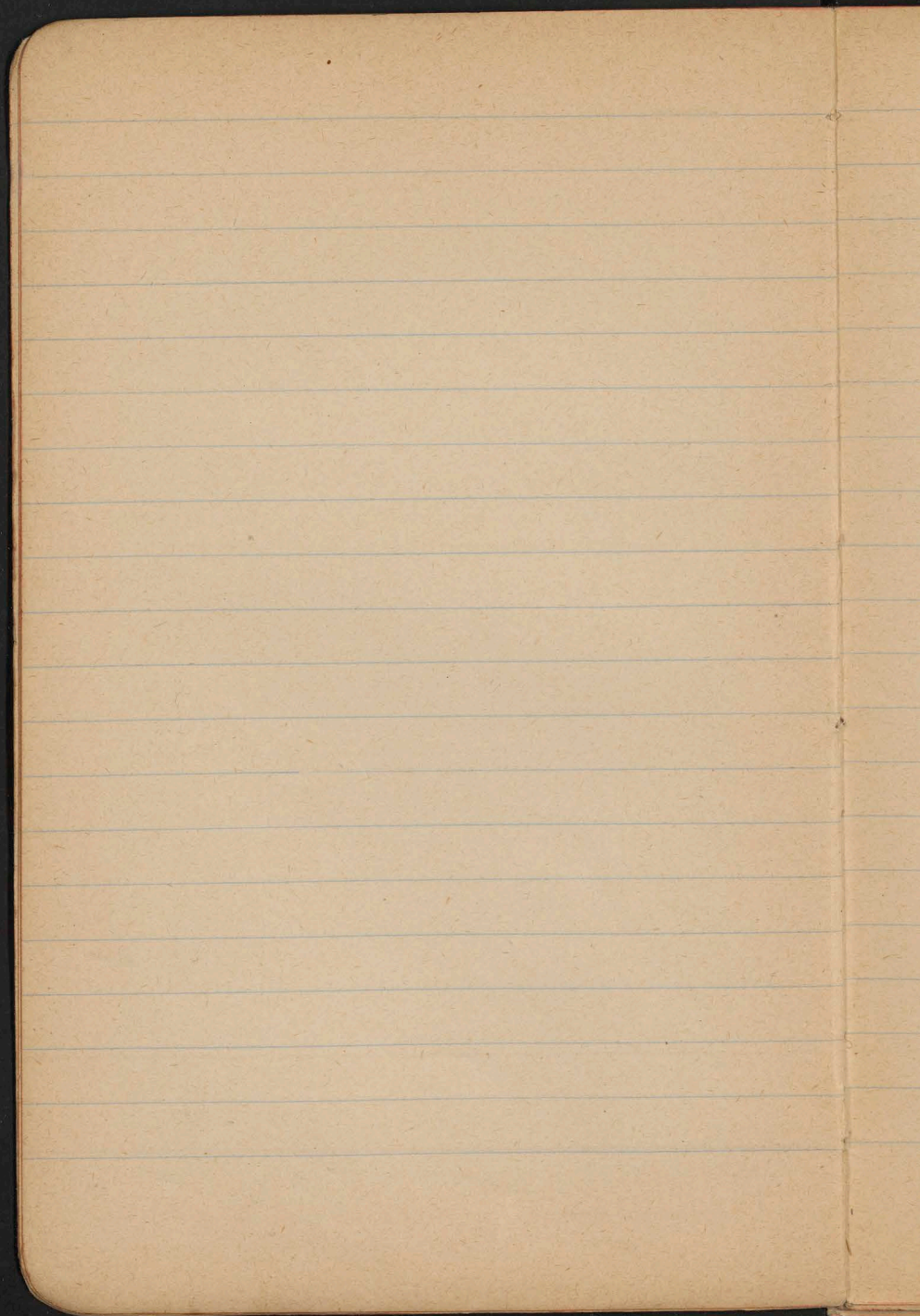
17. VII

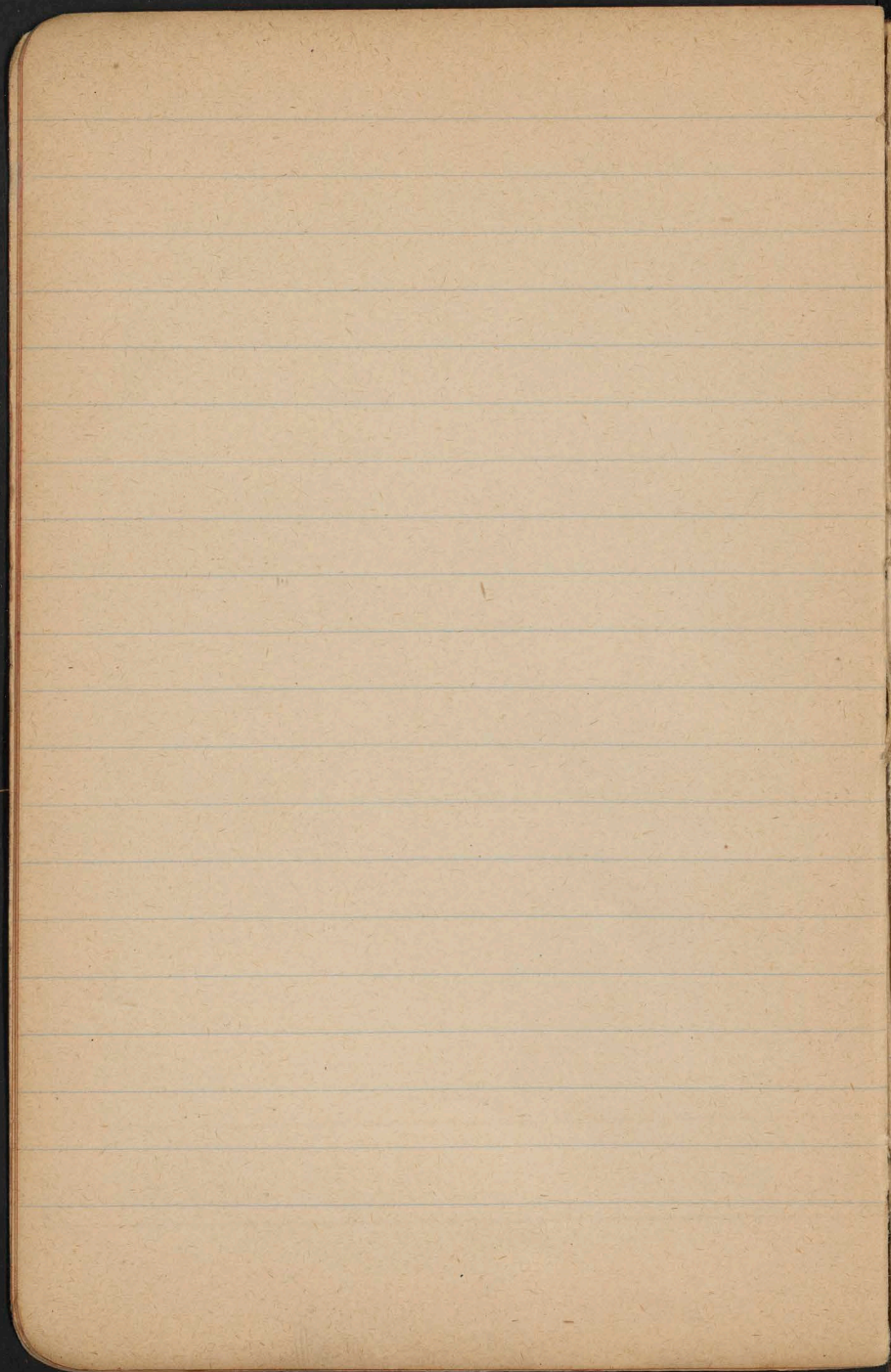
1 ha 641.5 st. —

6 ha 641.6 st. 14.4.

Rule Institute of Dist. Prof.
ca 250 on outside







11
47
7
1
4
8

16. VI 7 p. 642.6 14.0

8.30 p. 642.5 14.0

47
7. VI 1a 641.5 —
6a 641.6 14.4

$$h = 16000(1 + 0.004t) \frac{B_1 - B_1'}{B_1 + B_1'}$$

Engl. pooling Table

Liznar. Pravom Kihemavov. 1904.

	Swain B.	H6	H.
7.VI	7a 724.4	23.4	20.6
	2p. 726.15	24.6	27.1
	9p. 26.4	23.8	18.7
8.VI	7a 27.4 ₃₂	23.7	19.2
	2p. 26.9	24.6	25.6
	9p. 28.85	23.8	16.5
9.VI	7a 28.9	23.4	14.6
	2p. 30.1	23.6	16.0
	9p. 30.9	23.3	15.2
10.VI	7a 31.6	22.6	13.4
	2p. 32.0	22.8	18.0
	9p. 32.75	22.4	12.0
11.VI	7a 32.9	21.8	10.0
	2p. 32.25	21.8	14.0
	9p. 32.20	21.7	11.0
12.VI	7a 32.5	21.1	11.0
	2p. -32.0	-21.4	-15.6
	9p. -32.4	-21.0	-12.0

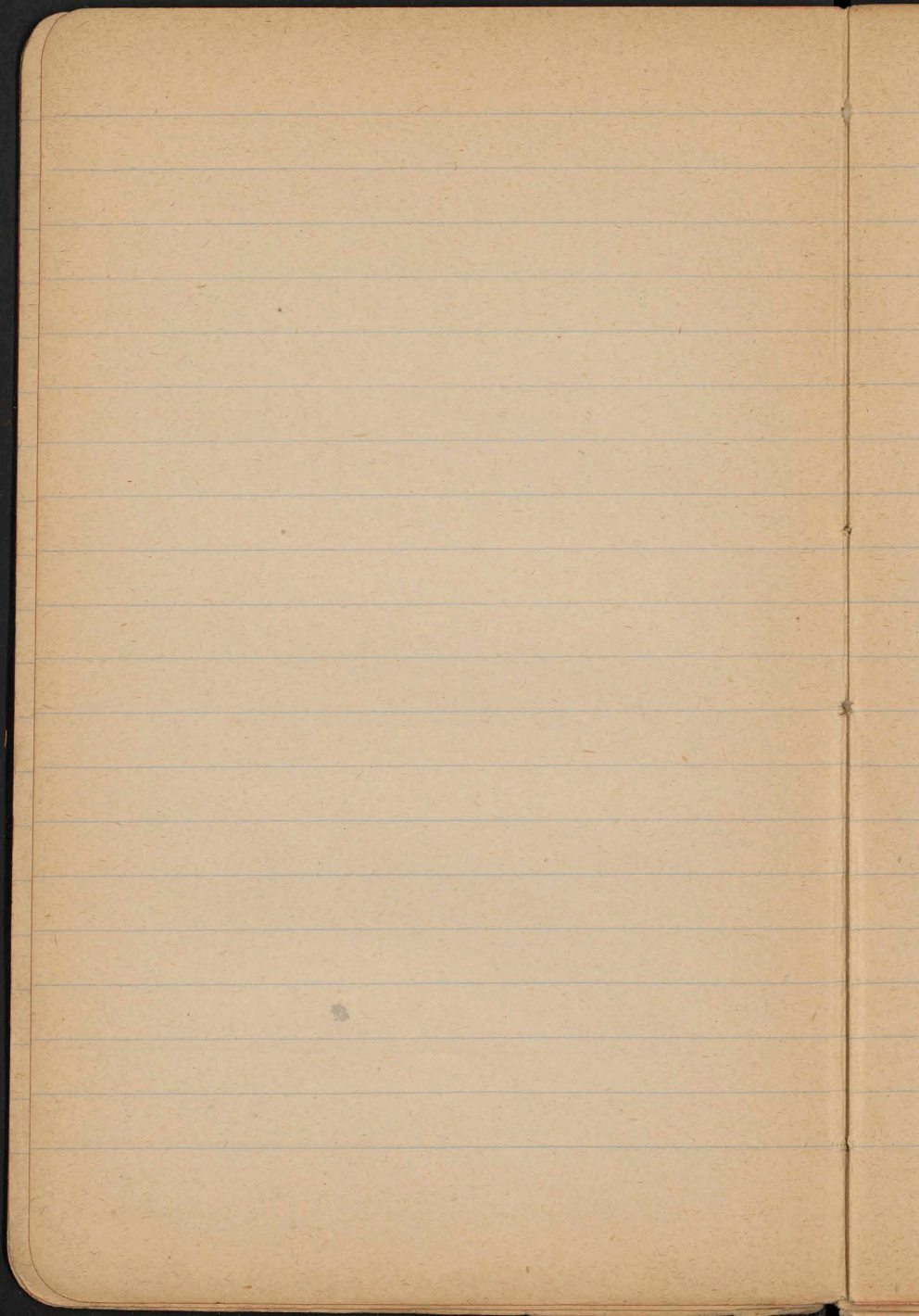
Nb. Koliba Spriniec panovní pod. Luova obl.

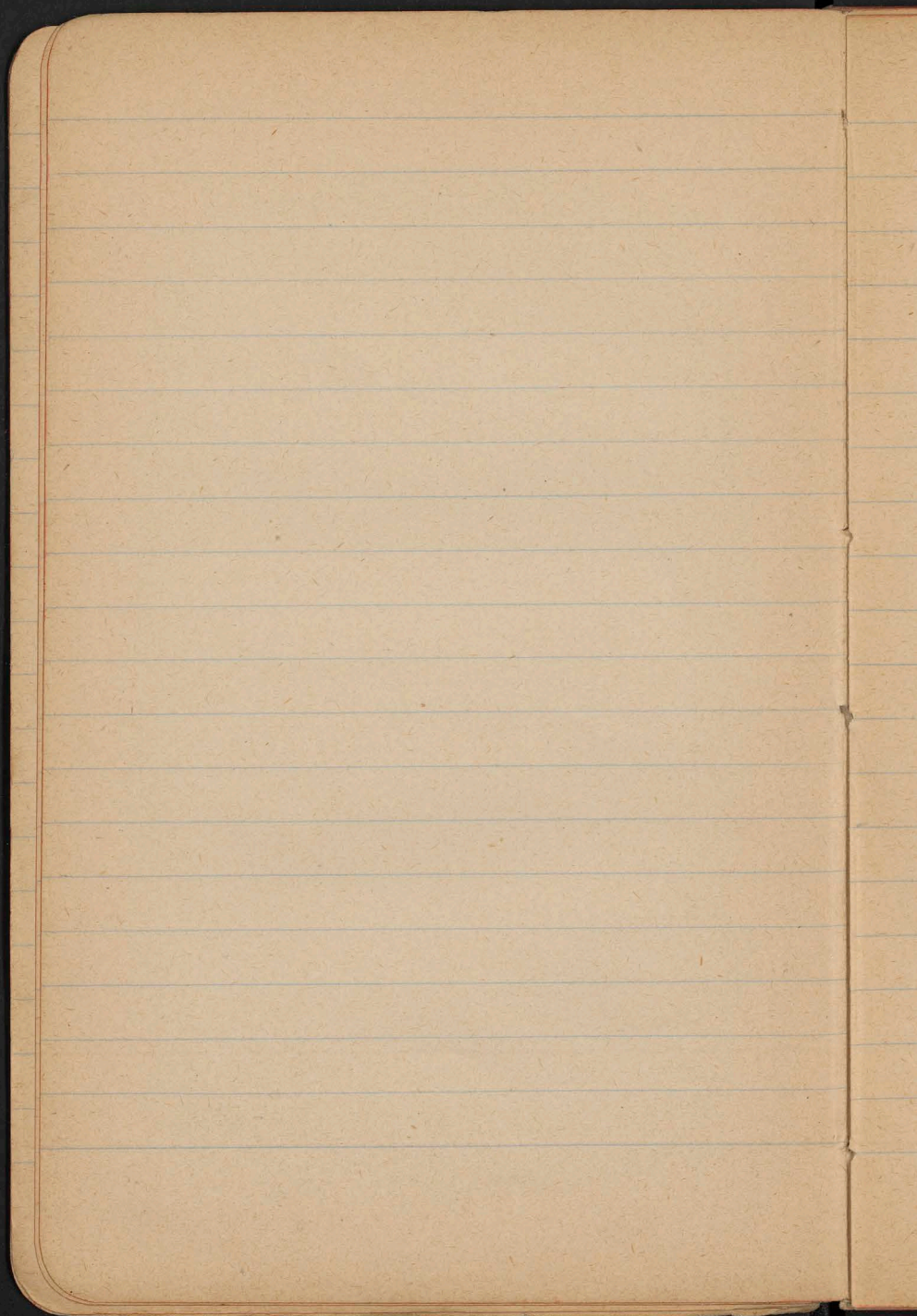
H = 1187.3 (ber uvrst bl a Kolibie - Janov)
 (podle jiným)
 uvrst. a profilu a Spriniec Vest.

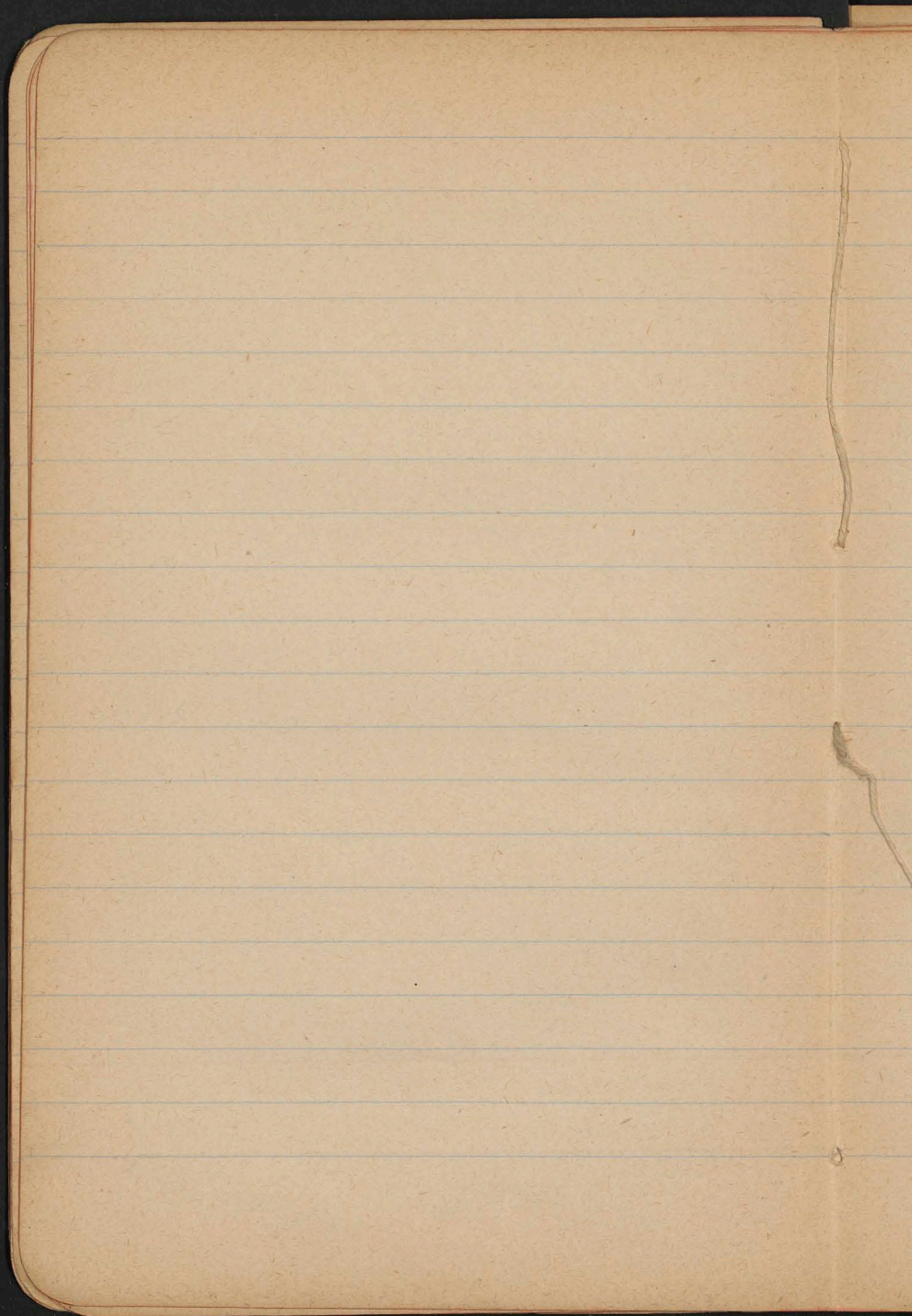
Nb. Koliba Dragobrat = 1253 (Lu. corr. slovin.)

Chata Towiecka = 1231 Mh.

Koliba Tatul = 1312







Vertical line of text, mostly illegible due to fading and bleed-through.

Diagonal line of text, mostly illegible due to fading and bleed-through.

7/17 h. B Bd st.

2:30 p. 632.0 17.0 12.6 + dol. sp. E I ←

8/17

9:10 a 633.75 14.9 10.5 " " " "

1:30 p. 636.5 24.5 14.8 sp. 4. paper ~~VII~~ ~~VI~~

2:30 p. 635.0 21.5 13.4 " "

10:35-11:15 a Bar. + 0.2 mm. 4 dol. horizon.

12:15-12:40 " ± 0.0 " " "

12:15 p. 628.0 14.2 7.7 } dol. horizon.
2:0 p. 628.7 12.0 — }

	L.	B.	13t	tt.	15
7.VI.	12h.30p	650'6	18'5	17'5	14'0° Kol. Sp.
	7h.30p.	650'0	13'7	10'0	

F 4 madyrasie nedi barometeru Kol. Sp. 2 do gory.

8.VI	4'30 a	650'0	18'5	17'5	11'5 K. Sp.
------	--------	-------	------	------	-------------

	4'15 p.	^{7a} 651'0 ^{650'5} _{9p. 652'4}	18'5	16'0	" "
--	---------	---	------	------	-----

9.VI	3'36 a	657'0	22'5	9'5	" "
------	--------	-------	------	-----	-----

	5'20 p.	636'0	15'0	11'0	K. Tatul.
--	---------	-------	------	------	-----------

10.VI	5'45 a.	636'5	18'5	13'0	6'2 " "
-------	---------	-------	------	------	---------

	12'20 p.	637'6	12'0	7'0	" "
--	----------	-------	------	-----	-----

	2'00 p.	638'2	12'0	6'0	" "
--	---------	-------	------	-----	-----

	5 p	637'6	12'5	5'0	" "
--	-----	-------	------	-----	-----

	7 p.	638'0	12'3	5'2	" "
--	------	-------	------	-----	-----

11.VI	4 a	637'0'5	9'8	3'3	" "
-------	-----	---------	-----	-----	-----

	6 a	637'0	9'8	3'0	" "
--	-----	-------	-----	-----	-----

	8 a	637'2	11'5	5'0	" "
--	-----	-------	------	-----	-----

	5'30 p.	^{636'0} _{3/6}	10'0	5'8	" "
--	---------	------------------------------------	------	-----	-----

	9 p.	635'6	3'0	1'0	" "
--	------	-------	-----	-----	-----

	12 p.	635'5	—	3'0	" "
--	-------	-------	---	-----	-----

12.VI	4 a	635'5	—	3'0	" "
-------	-----	-------	---	-----	-----

	5'30 a	636'2	(6'0)²	15'5	" "
--	--------	-------	--------	------	-----

12. VII

16. H.

9:45 a 666:8

13:9 Kl. ston.

1:0 p. 667:5

12:8 "

7-8 r. gromne flutuacye na garbie Drogobutu.
9:15-11:30: 607:2 - 606:5 na surynie Polki.
spodumien ≈ 5 mm; spid!

9:30 a 630:6
3:10 p 632:4

18° (III ston)
16° } podi. prof
 } w. Drogobutu

12. VI

4:15 p. 641.8 — 9.0 Kol. Dragebr.

18 p. 642.5 15.3

11 p. 643.5

13. VI 1a 643.5

Kol Dragebr.

5a 643.2 5.5 "

12 p. 645.2 11.0

6:30 p. 646.0 8.8 "

18 p. 646.0 6.0 "

14. VI 2a 646.0 — "

5:30 646.4 7.0 "

17:15a 645.2 10.2 "

7:30a 647.5 11.0 data for

5:30 p. 649.0 12.0 "

8 p. 649.6 9.5 "

15. VI 6:30a 647.5 14.0 "

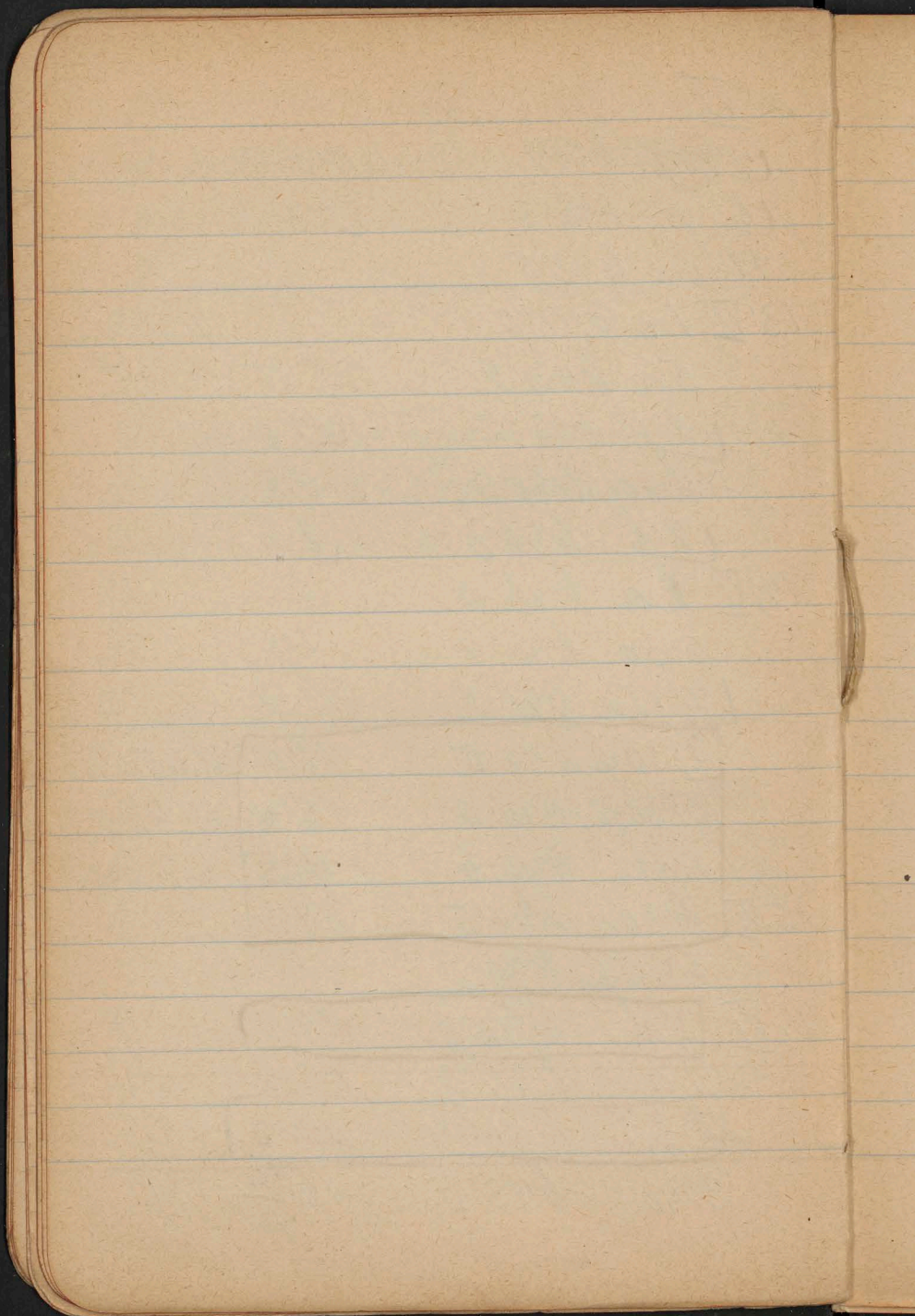
6:15 p. 649.5 — ?

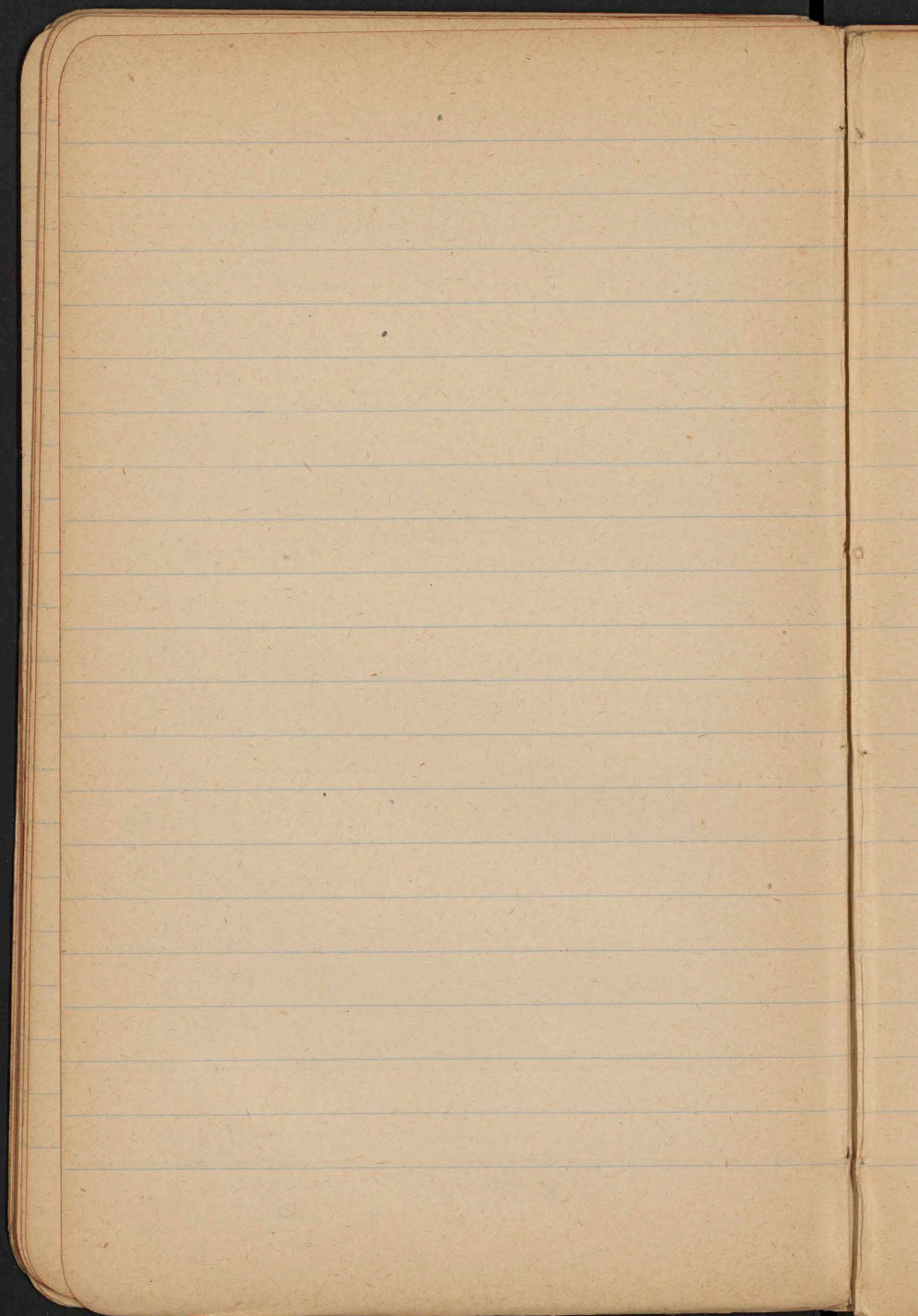
16. VI 7a 646.0 14.0 "

12a 644.9 15.4 "

2 p. 644.4 15.7 "

3:40 643.5 14.7 "





13.

14.

15.

16.

17.

18.

B. Sk. H.

13. VI Fa 732'2 20'4 15'0
 - 2p. 33'25 - 20'4 - 16'0
 - 9p. 33'5 - 20'5 - 13'8

14. VI Fa 34'0 -19'9 -16'0
 2p. 33'75 20'4 22'0
 9p. 34'55 20'4 17'1

15. VI Fa 34'8 20'2 19'8
 2p. 33'95 21'0 21'8
 9p. 32'80 20'9 18'5

16. VI Fa 29'70 20'6 16'4
 2p. 29'15 20'9 18'0
 9p. 26'90 21'2 16'8

Coll. Serra do Lidoanca 180 Km
 " Slatna " " 45 Km.

17. VI B₀ 726'3 — H=16'9

1
Kob

Bo

Bo

Sw

Bo

Sw

H

Ch

7

Q

Ab

Ab

6/

H

2)

13

Sw

To

F

$$H_1 = 1003 \cdot 3$$

$$Et = 33 \cdot 2$$

$$10300 + 338 = 10638$$

$$1347 \cdot 1341 \cdot 3$$

$$\text{Met. Babineta.} = 1030 + 338 = 1368 \text{ m.}$$

~~Met. Babineta. Dje za nishu spika.~~

3) Kol. Dragobrat.

$$\text{Biv. } 644 \cdot 1448 \cdot 5 = 652 \cdot 64 \text{ B} \text{ ca } 140 \text{ tt } 8 \cdot 3$$

L. iv.

$$\frac{733 \cdot 03}{2 \cdot 10} \text{ B} = 20 \cdot 6 \text{ tt } 14 \cdot 7$$

L. iv. = 2 uuzgl. grad.

$$\frac{730 \cdot 93}{2 \cdot 15} \neq$$

$$D_0 = 651 \cdot 2 \quad L_0 = 728 \cdot 5$$

$$h_d = 1260 \cdot 5 \quad h_L = 359 \cdot 3 \quad H = 901 \cdot 2$$

Et

$$= 347$$

$$+ 338 \cdot 0$$

$$H \text{ Dragobrat} = 1274$$

4) Chata Louiecka.

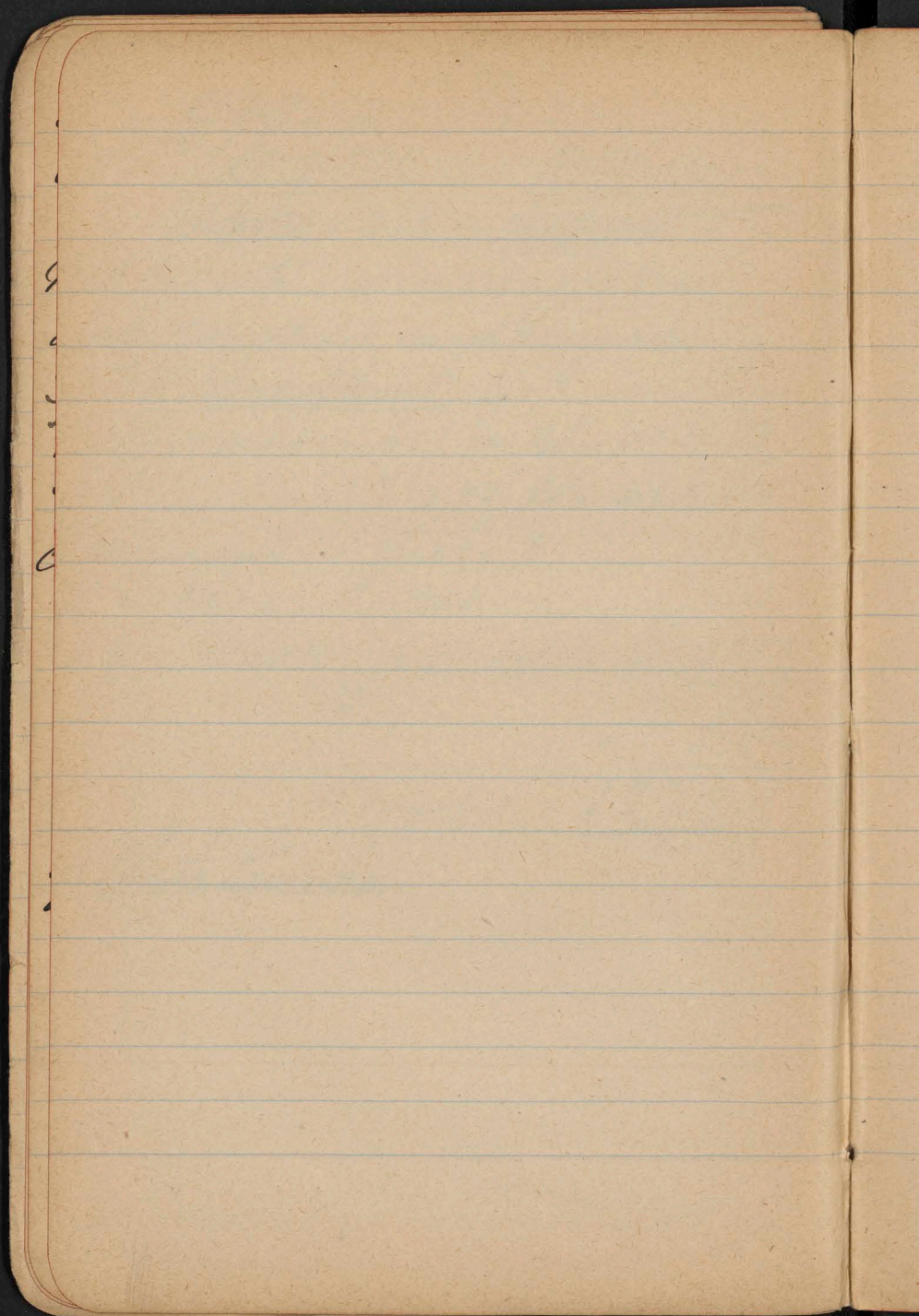
3

13

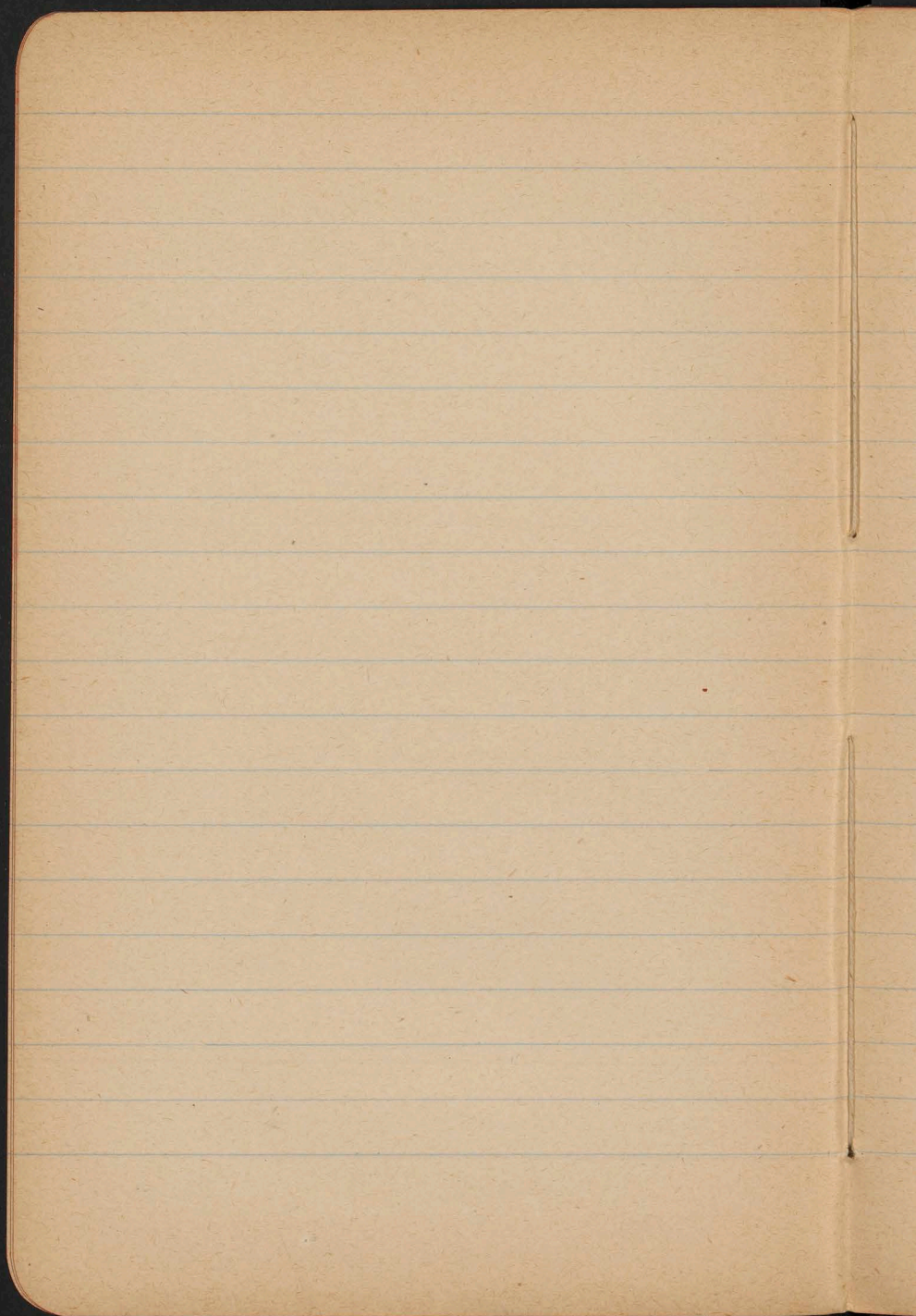
17

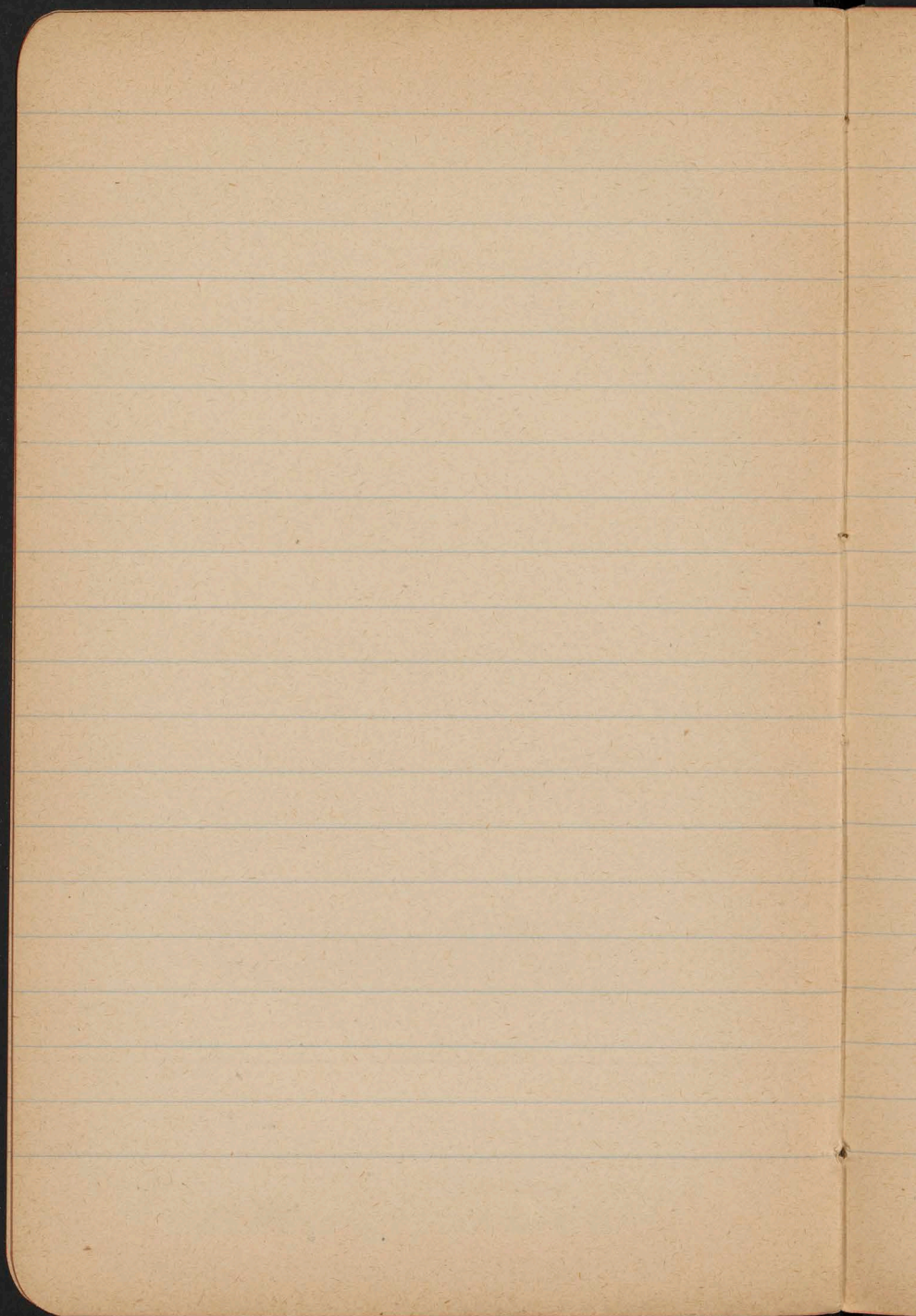
12

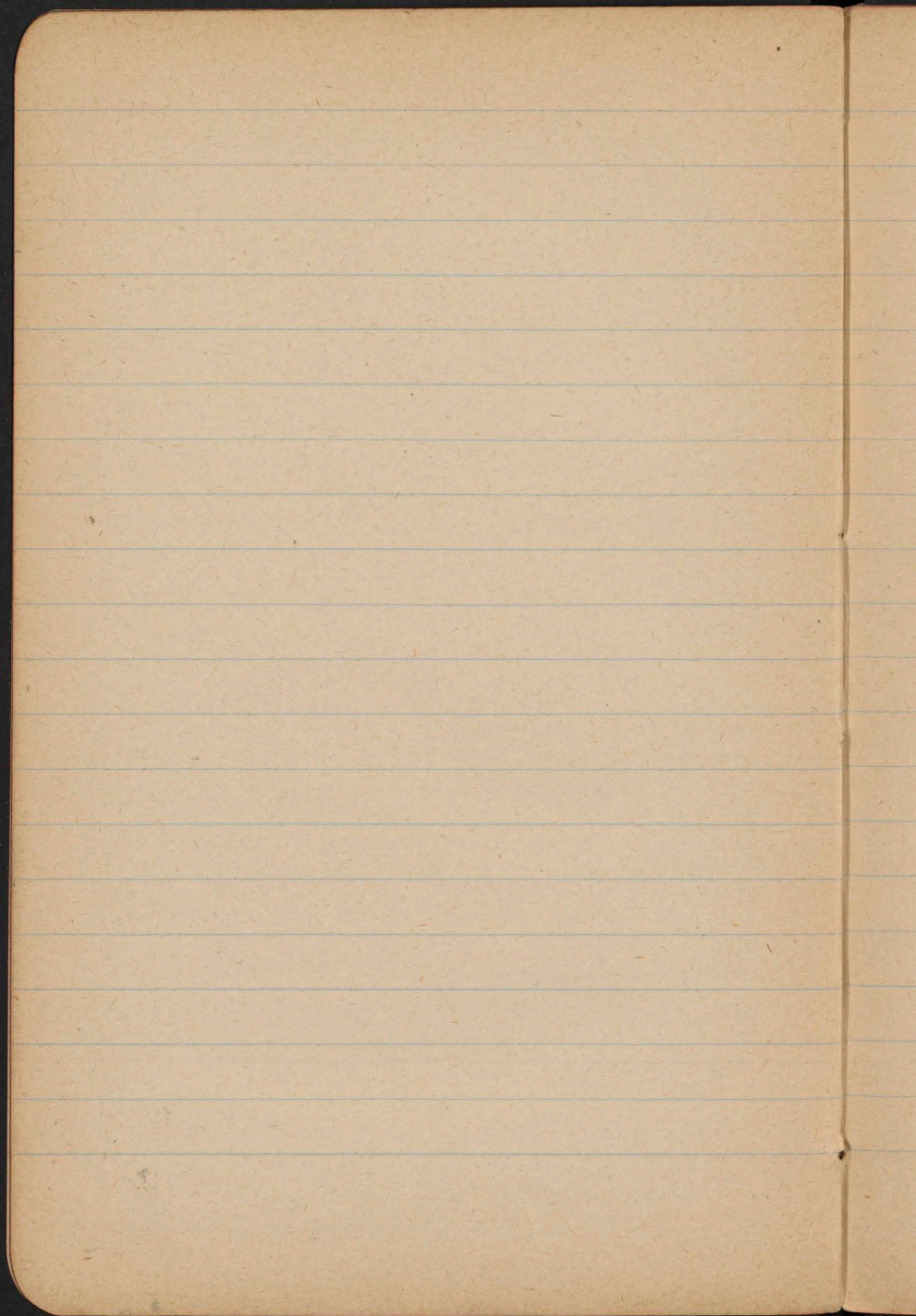
47
59

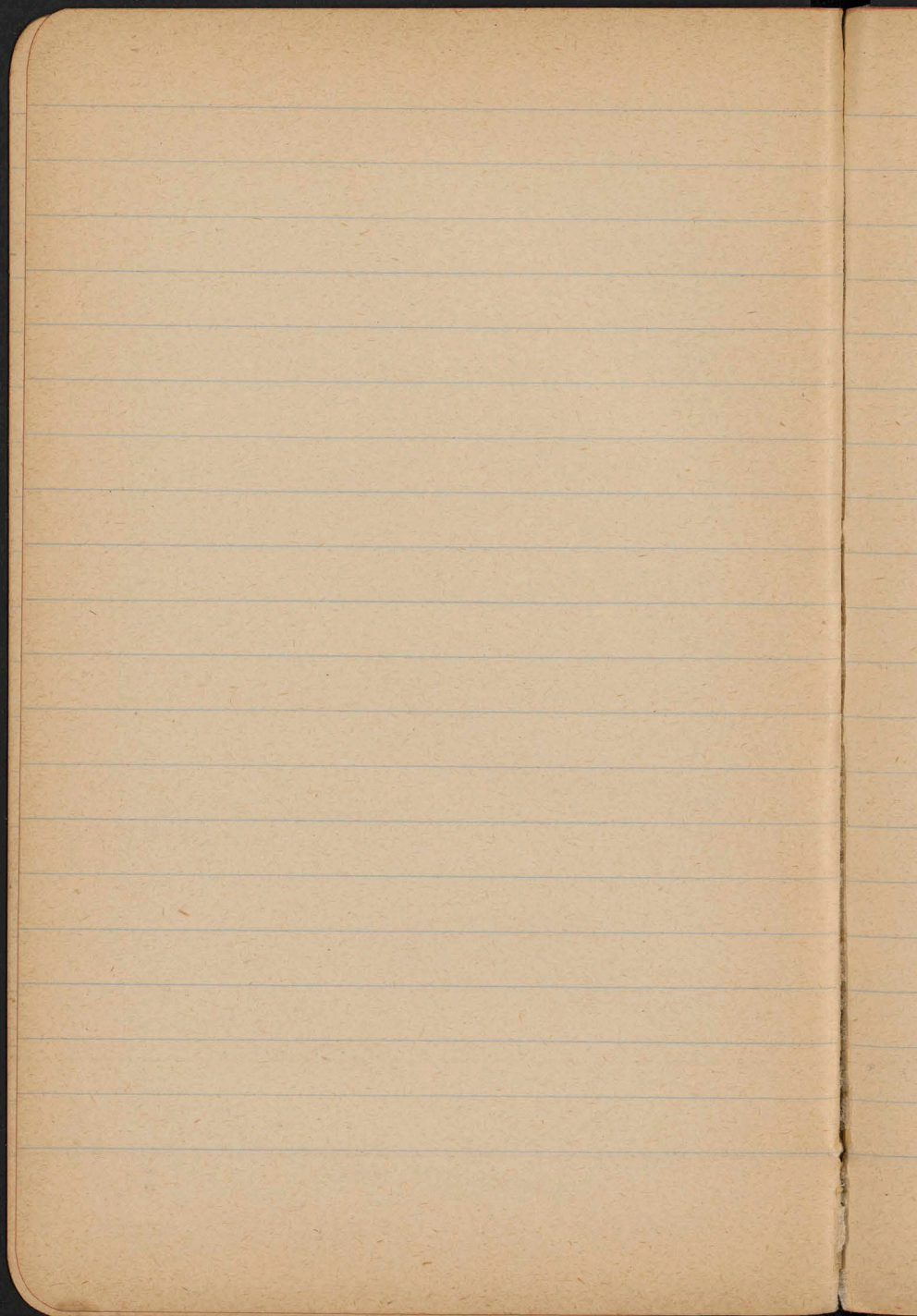


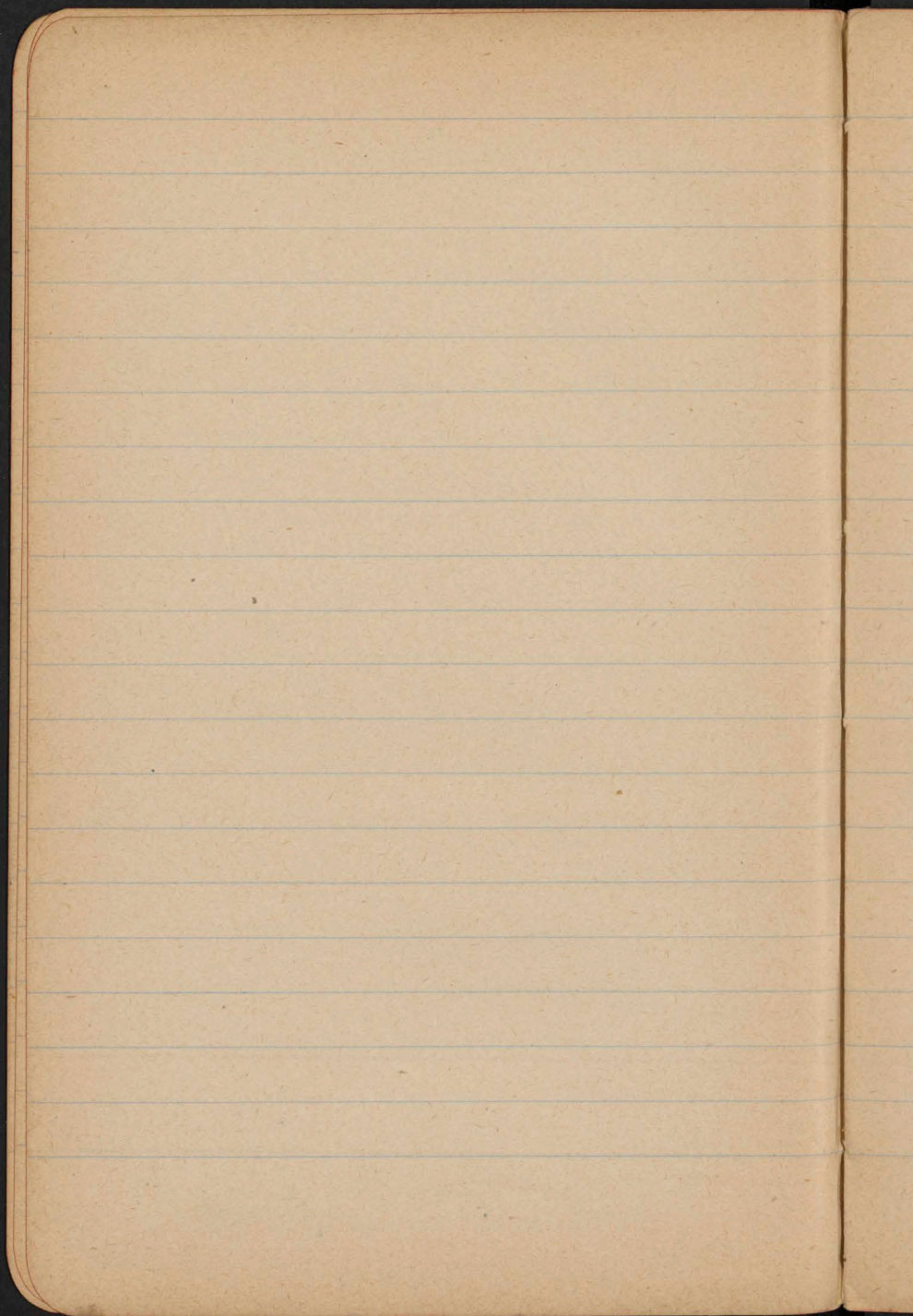
o
8
9
o
10
11
12
13
14
15
16
17
18
19
20
21
22
23
24
25
26
27
28
29
30
31
32
33
34
35
36
37
38
39
40
41
42
43
44
45
46
47
48
49
50
51
52
53
54
55
56
57
58
59
60
61
62
63
64
65
66
67
68
69
70
71
72
73
74
75
76
77
78
79
80
81
82
83
84
85
86
87
88
89
90
91
92
93
94
95
96
97
98
99
100

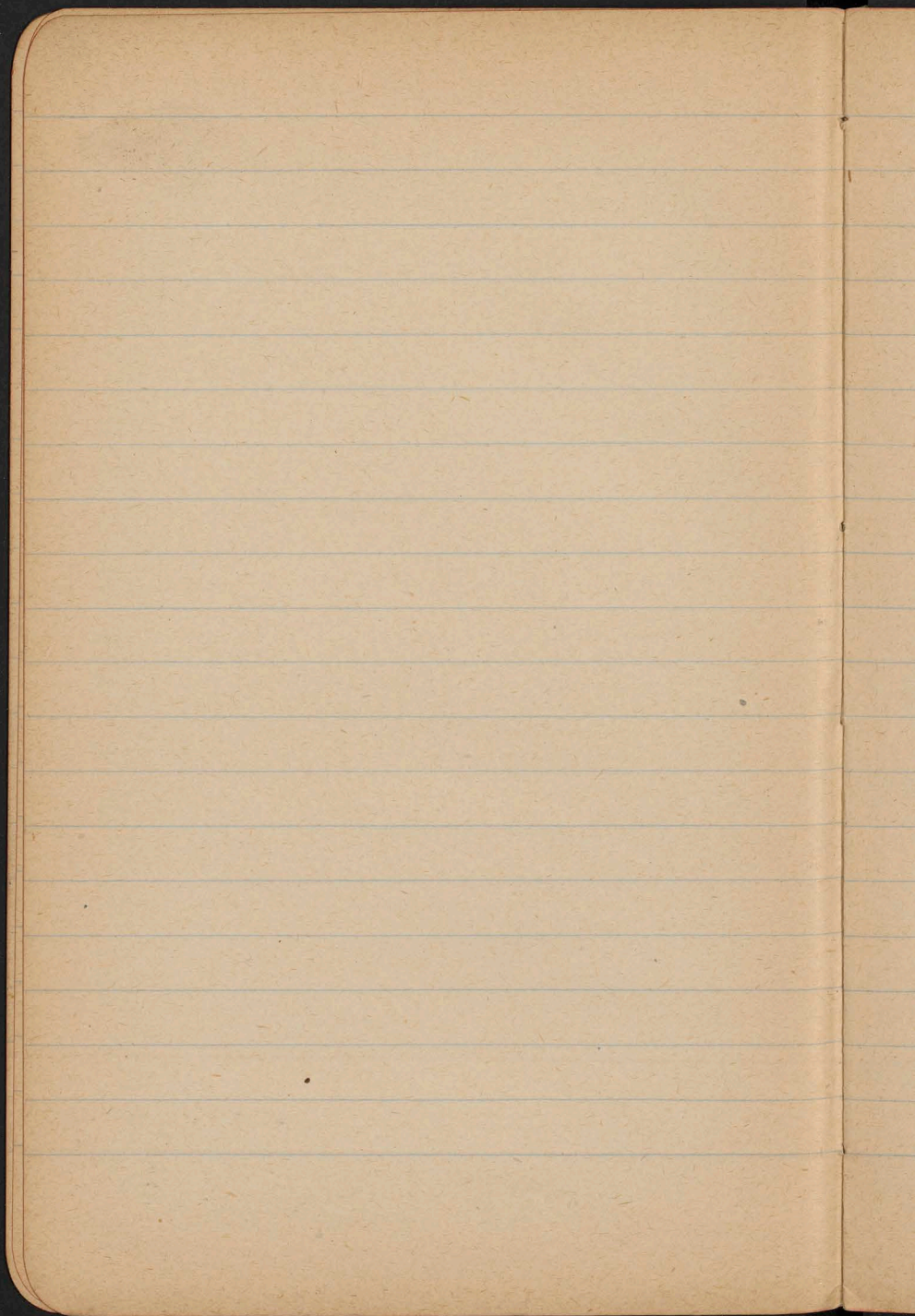












48° 22' 15"
 48° 23' 24.5"
 48° 21' 4.3"
 48° 22' 4.4"
 48° 18' 11"
 48° 15' 11"
 48° 10' 25.7"
 48° 54' 2.9"
 48° 13' 26.2"
 48° 13' 26.2"

48° 22' 15"
 48° 23' 24.5"
 48° 21' 4.3"
 48° 22' 4.4"
 48° 18' 11"
 48° 15' 11"
 48° 10' 25.7"
 48° 54' 2.9"
 48° 13' 26.2"
 48° 13' 26.2"

131.26
 134
 15

488

325"

54239:60 = 0.90

5201

493.213

135
433

163335:60 = 2.72

1485

495:60 = 8.25

1.80"

12

148.5

495.5 = 0.99

317"

493.213
814.3:60 = 13.6

34 Kone Tamara kishi

everyone by way of
Room W 36.0
kunt 319.35
2.04
pot 3.4
st 1.36

35 prame kome tamara
Room W 36.0
pot 3.4
kunt 319.29
2.28
st 1.12

from II na woyun wppa

my Dr Katermann every day
Klara, Bläuer, Chomwah

Klara | Room 638.5 | 4.95 H/190

Room W 630.0

kunt 37.14

st 10.31

Chomwah

Room W 530.45.0

kunt 84.20

st 00.29

Flax IV Peter

26 in Deline by Linn. list
Bar 631.9 h. 3.40 to 14.50

in 1st peak in morning
Bar 360 N
dunk 246.41
tot 2.3
det 2.1

27 in Deline west in evening
is probably det. in
Bar 360 N
dunk 242.36
tot 2.8
det 2.4

28 in Deline morning
Bar 220 N
dunk 250.52
tot 2.8
det 2.1

29 in forenoon
Bar 330 N
dunk 249.50
tot 3.0
det 2.195

Bar 360 N
dunk 246.41
tot 2.3
det 2.1

21
 Jan 1. L: 3.20 Bar 631.4 H 160 Toke
 Gross W 45.00 for 2.2 0.35
 bank 285.231 net
 net - 10 21 wt 1.855

The skin V.
 Don't seem much at all. W 20.00
 (spice: fufusone can't they be more glowing?)
 profile ca. from
 legs like as straight young. 2.00
 something momentary - not in skin
 various - some morning profile
 and the large legs for some more
 W. 1.00 for skin preservation, various of

21 at home from
 Gross W 50.00 for 3.4 1.36
 bank 204.321 net
 net - 15.44 wt 2.04

1610 481
 1610 511

17.5

Flour III bread 16

Bar. 626.2 \times 12.30 \neq 150 kcal

17 for uncooked

Barin W 51.03

Barin 220.6

Bar 0.39

Bar 3.3

Bar 21.42

Bar 2.91

18 WGT in Kcal

Barin W 36.28

Bar 3.4

1680' drink 205.31

Bar 14.25

Bar 2.23

19 Wt Kcal

Barin W 40.0

Bar 3.0

1702' drink 209.2

Bar 14.26

Bar 1.23

Flour IV bread 19

Bar 630.7 \times 1.10 \neq

Bar 13.10

Bar 192.48

Bar 0.7

Bar 19.26

Bar 2.15

0.58

20.10.20

1981

1981
for 2.7
at 1.98
0.42

Bank W 10 U
2005.91
- 11.56

1710
for 3.3
at 2.57
0.43

Bank W 210 M
3584.5
- 6.32

1680
for 3.0
at 2.55
0.45

Bank W 290 M
3505.5
- 8.56

1700
N=1
1690.3
0.10
for 3.3
at 2.965
0.65
0.23
0.23

Bank W 390 M
3404.61
- 14.17

13. 1/2 brick house on the...

1710

~~0.86~~
0.86
3.3
2.435
865

12
dunk 158052
Brim 4100
Nest - 1034
Nest

12
Nest - 1204
dunk 15906
Brim 4050

11
Brim 4050
dunk 15906
Nest - 1204
Nest - 1204
Brim 4100
dunk 158052
Nest - 1034
Nest

0.36
3.5
3.32
3.14
0.18
0.19

10
Brim 4050
dunk 158014
Nest - 15052
Nest

10
Brim 4050
dunk 158014
Nest - 15052
Nest
Brim 4050
dunk 158014
Nest - 15052
Nest

1.32
3.3
2.64
1.98
0.66
0.66

9
Brim 4050
dunk 158014
Nest - 15052
Nest

Klemmuel

14.0
0.41
~~0.28~~
0.28

—
—
Buns 890° 0

8 Y. Olive Wren

14.0
0.41
0.28
0.28
0.28
0.28

—
—
Buns 100° 15'

7 in the canyon

0.23
0.23
0.23
0.23

—
—
Buns 190° 0

6 no strength in canyon

0.110
0.115
0.115
0.115

—
—
Buns 151° 55'

5 2 spots in canyon

—
—
Buns 156° 56'

up in the Klemmuel

7 in the canyon

Frank

Bills W 45.00
drub 220.21
debt + 0.9.30

T. Dilling House / La. 11/11/1907
Rent of 43H
per 2.3

debt 200.35
debt - 0.40
debt 2.12.60.87
per 0.19.4.2.13

2 pay for insurance

Gen. 1050 H
per 1.20
kimb 262.50
debt + 30.39
debt 0.48.9.5.50.25
debt 0.15.2.15.25.0

3 pay for insurance

Bills 94.0 H
per 3.0
kimb 257.12
debt + 70.56
debt 2.1.1
0.45

11 pay for insurance
Bills W 80.0 H
debt + 160.52
debt 0.45

debt + 160.52
debt 0.45

32

Bus \$61.00
 for 2.2 { 0.65
 1.55 }
 dirt 128° 14' 1.3 and 1.55
 vent - 10.57' } 0.90
 } 0.65

33

Bus \$57.00
 dirt 132° 24' } 0.87
 1.24 } 2.13
 vent - 6.92' } 1.26
 } 1.26
 } 0.87

34

Bus \$55.00
 for 3.2 { 1.8
 dirt 134° 28' } 2.4
 2.0 }
 vent + 4.96' } 0.80
 } 1.2

Prof. measuring det. *Pudamockia*
 (Pudamockia) *hispida* Kuhn
 11 ha 13 622.6 ft. 13° 30' 25 sec
 A sho creek
 Bus \$53.00

Bus 30.56'
 vent - 0.81

87.

87.

0.205

0.205

0.69

0.35

0.35

87.0 } 0.18
87.0 } 0.18
87.0 } 0.18

drunk 130° 40'
Buns 55° 00'
Nest - 19° 25'

31
h. y. Bar. 63.3 y ft 130
A. A. Thumuck 22.
Osting f...
Nest - 19° 41'

50.0 } 0.205
50.0 } 0.205
50.0 } 0.205

drunk 168° 10'
Buns 50° 0
Nest - 19° 41'

0.7 } 0.7
0.7 } 0.7
0.7 } 0.7

drunk 336° 24'
Buns 44° 0'
Nest + 16° 50'

0.7 } 0.35
0.7 } 0.35
0.7 } 0.35

drunk 341° 20'
Buns 44° 0'
Nest - 1° 21'

30
H. Kross
Buns 44° 0'
Nest + 16° 50'

29

28

Boston

Gen. 894.0^M

drunk 45.38'

nest + 31.26'

Col 19-24 infil pottermy house.

~~Genil pottermy of. Oregon~~

~~Gen I to Gen inf. house. III~~

3810 p. 632.4 M. 16.

25.

Gen. W20^M

drunk 453.21'

nest - 19.31'

for 2.8

drunk 12.66'

nest 9.52'

for 2.5

drunk 9.25'

nest 2.00'

Gen W110^M

drunk —

nest - 10.6'

Gen I na penny increase
h 3.30 Bar 652 at 17.

27

Gen W360^M

drunk 348.44'

nest - 18.10'

for

2.8

drunk 2.64'

nest 2.48'

H = +18.8

nest

drunk 362.047

gross 548.0121

10605

3.3
3.695
8.09

Q = 162

24

nest - 30

drunk 360

gross 574

H = -60

Q = 115

0.85
0.425
2.525
3.0
2.15

H = -154

Q = 77

nest - 110.181

drunk 360.521

gross 490.0

0.59
0.295
1.285
1.5
0.91
0.295

H = -142

Q = 53

nest - 150

drunk 360

gross 510.0

0.42
2.8
2.59
0.21

H = -3

Q = 50

nest - 30.361

drunk 135.041

gross 840.7

0.37
2.315
2.5
0.185
2.13
0.185

120
gross 122

1592
Flac IX. Gross. 69.6 H 130

Flora V. Hunt 8. From north
 810-15 Bar. 626.25 + 150 hks. 21.
 H. 150g (total)

g. Bush 26 H $\bar{Q} = 154$
 drive 136.54 H=9.5
 leaf + 3.28
 } 0.585
 } 2.23
 } 1.17

110.54
 111.80
 222.24
 110.12

Mass 24 H $\bar{Q} = 288$
 drive 135.30 H=40.5
 leaf + 8.8
 } 1.09
 } 2.81
 } 2.18
 } 1.04
 } 1.82

Flora VI in the morning
 Bar 623 H. 1430
 10.45

H. 1552 (dark 7.20)
 2 runs of 22 H $\bar{Q} = 78.3$ per 34.5
 drive 261.05 H=29.0 over 30.8
 leaf + 20.18
 } 0.33
 } 0.33

Flora VII in the morning
 Kanway

Green Man Bm 18 &

drink 24022

dent + 1035

1. Price 55 N D=208 price 3.40
Buck Lamb 252° 5' H=246.4 rel 2.38
dent + 644' $\frac{196}{5}$ but 154
2. Price 54 N D=307 price 3.40

drink 250° 35' H=523 price 2.23
dent + 940' area 1.06
2. Price 54 N D=307 price 3.40

John II by number 2 (I derived it from 1406)
Bar. 634 at 17.5° (slang)

Price 44 N D=80 price 2.6
drink 331° 30' H=110 price 2.23
dent + 2051

Price 46 N D=110 price 3.3
Lamb 334° 15' H=287 price 2.26
dent + 2051

John III. Hunt 4. primary volume

9.30 am 631.6 ft. 180

H=1439

47k

Bar 138M
drive 33708.
Vent + 8049.

[N 390 42.4']

Vent + 2026.

Station

drive 138033.

[⁵ 200 21.2']

vent + 15019.

drive 228042.

Bar 1883 Bar 32M [ppr: 332.42.4']
H = 1345 (data).

Bar 6387 H 18.82.42

Bar I. Traverser m. 9.8.10

14/VI

Depth position at.

Bar 639 H 14.0.42.42

Bar 6354 H 14.3.50

Bar 639 H 14.0.42.42

Bar 639 H 14.0.42.42

Bar 639 H 14.0.42.42

1261.

0.252

0.328

0.329

0.147

0.32

3.304. 0395 # 14.0 # 6.5

primary paper. 1000000

when paper gets into right & wrong

weights and bulk make problems - 2 mcs

weights, etc. - on 10 lbs machine - 1 mcs

weights, etc. paper when machine is in

Step 1 & 2 (action @ post-performance)

MARK + 230840

Count 234039

Grade 5 N.

Grounding machine

Mark + 10331

Count 89081

Grade W 3503

Grade W 2400000 4000

Mark + 0.34

Count 49053

Grade W 40 W

4. Count paper 2 (left) (right) (center)

Pr 2.09

W 2.19

Gr 2.3

0.105

0.105

0.105

1/2 lb paper & paper
from 1000000

Count 234039
Grade 5 N.
Grounding machine
Mark + 10331
Count 89081
Grade W 3503

Count 49053
Grade W 40 W
Pr 2.09
W 2.19
Gr 2.3
0.105
0.105
0.105

9/6/51 Run 536 W
 sum. 240'41"
 Nest. + 0'401

gr 2.3
 h 2.173 }
 0.127 }
 0.252 }
 Nest 2.048
 0.125

2) Run 530 E
 sum 231'33"
 Nest. + 0'351

gr 2.40
 h 2.235 }
 0.165 }
 0.328 }
 Nest 2.042

1) Run 521'0 E
 sum 244'08"
 Nest. + 0'301

gr 2.3
 h 2.137 }
 0.163 }
 0.324 }
 Nest 1.946

~~At home on the nest program distance
 the first egg begins to move~~

~~Run
 sum
 Nest~~

10. Run 529 E W
 sum 272'18"
 Nest - 2'581

gr 3.3
 h 3.225 }
 0.075 }
 0.147 }
 Nest 3.153

9. Run 558 W
 sum 307'20"
 Nest. - 2'481

gr 2.4
 h 2.24 }
 0.16 }
 0.32 }
 Nest 2.08

4.

0.35 {
 0.185 {
 0.165 {
 0.145 {
 0.125 {
 0.105 {
 0.085 {
 0.065 {
 0.045 {
 0.025 {
 0.005 {

0.15
 0.135
 0.12
 0.105
 0.09
 0.075
 0.06
 0.045
 0.03
 0.015
 0.005

14.2 14.2 14.2 14.2 14.2 14.2 14.2 14.2 14.2 14.2 14.2

0.02 {
 0.057 {
 0.114 {
 0.171 {
 0.228 {
 0.285 {
 0.342 {
 0.399 {
 0.456 {
 0.513 {
 0.570 {

0.01
 0.02
 0.03
 0.04
 0.05
 0.06
 0.07
 0.08
 0.09
 0.10
 0.11
 0.12

0.37 {
 0.185 {
 0.185 {
 0.185 {
 0.185 {
 0.185 {
 0.185 {
 0.185 {
 0.185 {
 0.185 {
 0.185 {

0.15
 0.135
 0.12
 0.105
 0.09
 0.075
 0.06
 0.045
 0.03
 0.015
 0.005

14.2 14.2 14.2 14.2 14.2 14.2 14.2 14.2 14.2 14.2 14.2

0.09 {
 0.245 {
 0.245 {
 0.245 {
 0.245 {
 0.245 {
 0.245 {
 0.245 {
 0.245 {
 0.245 {
 0.245 {

0.15
 0.135
 0.12
 0.105
 0.09
 0.075
 0.06
 0.045
 0.03
 0.015
 0.005

0.23 {
 0.115 {
 0.115 {
 0.115 {
 0.115 {
 0.115 {
 0.115 {
 0.115 {
 0.115 {
 0.115 {
 0.115 {

0.15
 0.135
 0.12
 0.105
 0.09
 0.075
 0.06
 0.045
 0.03
 0.015
 0.005

1425

Prof. Thompson

I have to thank you for 80 km on out

1. 0.001195, 0.0282, 0.12, 0.525

4. Rain N 88° E
limb 152° 34'
hmn + 20.20
Apr 1.61
Apr 2.307
Apr 1.955
Apr 0.395
Apr 0.069

2. Rain N 86° E
150° 8'
hmn + 17.0
Apr 1.90
Apr 1.95
Apr 1.74
Apr 0.73
Apr 3.1
Apr 3.22
Apr 2.87
Apr 2.14

dropped 1/2 & 2 in front, on 2 or 3 of front
and being on the outside of front
change of position between 2 & 3 of front.

3. Rain N 90° W
limb 333° 28'
hmn - 20.41
Apr 3.0
Apr 2.64
Apr 2.29
Apr 0.86
Apr 0.35
Apr 0.07

II Start + hmn = 3

4. Rain N 82° W
limb 553° 26'
hmn - 41° 56'
Apr 3.00
Apr 2.925
Apr 2.850
Apr 0.075
Apr 0.075
Apr 0.15

p. 8 = 1425 / 2.086

Stam VII p. 8
 Cl. 10.35 B. 628 To. M. 2 At. 5
 g. Row 8 14.53.
 g. Row 32 10
 g. Row 30 0.86
 g. Row 29 1.72
 g. Row 28 0.86
 g. Row 27 1.28

Offen VII 4 h 9
 Cl. 10.45 B. 627 At. 10.5 At. 6
 g. Row 29 0.88
 g. Row 28 3320
 g. Row 27 13086
 g. Row 26 0.13
 g. Row 25 0.26
 g. Row 24 0.13
 g. Row 23 0.13
 g. Row 22 0.13
 g. Row 21 0.13
 g. Row 20 0.13

11 - Row 5 24 W
 g. Row 3 19 24
 g. Row 2 20 25
 g. Row 1 26 W
 g. Row 5 26 W
 g. Row 3 4 2.185
 g. Row 2 1.85
 g. Row 1 2.185
 g. Row 0 0.600
 g. Row 0 0.615
 g. Row 0 0.600
 g. Row 0 0.615
 g. Row 0 0.600
 g. Row 0 0.615

12. Row 5 26 W
 g. Row 3 19 24
 g. Row 2 20 25
 g. Row 1 26 W
 g. Row 5 26 W
 g. Row 3 4 2.185
 g. Row 2 1.85
 g. Row 1 2.185
 g. Row 0 0.600
 g. Row 0 0.615
 g. Row 0 0.600
 g. Row 0 0.615
 g. Row 0 0.600
 g. Row 0 0.615

W. 2. 18. 16.

18.

5.

g.N

Barre

142.321

gum

gum 8.8

gum 3.8

gum 2.425

gum 0.875

gum 0.875

gum 1.585

1376

Stom. III to June - 5, total in total morning known

St. 10 B. 682, K. 11, K. 11.6

gum 9.6503

gum 33.501

gum + 19.201

1410

gum 3.2
gum 2.7
gum 2.2
gum 0.5
gum 0.5
gum 1.0

Stom. IV to p. 6

St. 10.15 B. 629, K. 11.2, K. 4

gum 5.504

gum 13.0431

gum + 12.201

gum 3.30
gum 2.88
gum 2.46
gum 0.42
gum 0.42
gum 0.84

Minimum de volume known N 38.62

gum 2.240
gum + 1.040

gum 18.8043
gum 3.5017

1429

Stom. I to p. 7
St. 12.10.25, B. 627.5, K. 11.5, K. 4

gum 5.10.2012

gum 143.391

gum + 6.0221

gum 2.2
gum 0.43
gum 0.43
gum 0.86
gum 1.734

9.

The difference in price
 I should be no great matter for
 no a difference in price

(for price No. 11.11)

11.9.30 8686, 11.9, 11.5 1324

4. Banor 118.502
 347.039, 08
 3.47339
 11.9.30 8686, 11.9, 11.5 1324
 11.9.30 8686, 11.9, 11.5 1324
 11.9.30 8686, 11.9, 11.5 1324

2. Banor 514M
 172.481
 130.481
 1336
 2.155
 0.245
 0.240

II 11.9.30, 11.2
 11.9.30, 11.2
 11.9.30, 11.2

3 Banor. 520W
 148.018
 2.6
 2.31
 0.29
 0.58

4. Banor 50301W
 148.035
 3.3
 2.51
 0.79
 1.58

Man. ~~100~~ + 5041

dm: 2420 391

Jorawka BmV 160M

Man + 6040

BmV 2850

BmV 564M

Man - 0050

dm 2140 51

BmV 5480M

BmV 2.6 } 0.25
Man 235 } 0.25
dm 210 } 0.25

dm 218 } 0.21
Man 239 } 0.21
dm 260 } 0.21

BmV 564M }
Man 195044 }
dm 1402 }

BmV 589M }
Man + 2405 }
dm 1180 }

BmV 5220E }
Man + 20046 }
dm 14603 }

Man 10440 }
Man 6283 }
Man 10440 }

Man

Man
dm
BmV

Man

Man

Man

Man

1494 (Koblenz XII: XII)

36. Gewürz 5 41.0 W
 Gew 3.0
 Gew 2.55
 Gew 2.10
 Gew 0.45
 Gew 0.45

Gewürz + 11.0 81
 Gewürz 2.5 88

Wasser im Wasser

35. Gewürz 5 23.0 10 W
 Gew 3.1
 Gew 2.4
 Gew 0.2
 Gew 0.38

35. Gewürz 5 23.0 10 W
 Gewürz 23.9 0.2
 Gewürz - 0.0 21

34. Gewürz 5 0.3 0.2
 Gew 3.0
 Gew 2.4 25
 Gew 0.5 25
 Gew 0.5 25

34. Gewürz 5 0.3 0.2
 Gewürz 2.4 0.5
 Gewürz * - 0.0 51

33. Gewürz 5 3.9 0.2
 Gew 3.0
 Gew 2.54
 Gew 0.45
 Gew 0.91

33. Gewürz 5 3.9 0.2
 Gewürz 1.6 0.54
 Gewürz + 0.0 381

32. Gewürz 5 8.0 0.2
 Gew 3.0
 Gew 2.53
 Gew 0.47
 Gew 0.48
 Gew 0.95

32. Gewürz 5 8.0 0.2
 Gewürz 1.3 60
 Gewürz + 1.0 291

31 Gewürz 5 2.9 0 W
 Gew 3.5
 Gew 3.16
 Gew 2.93

31 Gewürz 5 2.9 0 W
 Gewürz 2.4 5.5 51
 Gewürz + 0.0 381

31 Gewürz 5 2.9 0 W
 Gewürz 2.4 5.5 51
 Gewürz + 0.0 381

~~1494 (Koblenz XII: XII)~~
 1494 (Koblenz XII: XII)

IX Stom when p. 29
 Run. 5.25 M
 Run. 2.39.55
 Run. 2.29
 Run. 3.3
 Run. 3.155
 Run. 0.145
 Run. 0.165
 Run. 12.5
 Run. 17.8
 Run. 17.8
 Run. 17.8
 Run. 17.8

X Stom when p. 29
 Run. 5.32.5 M
 Run. 1.09.10
 Run. 1.08.42
 Run. 2.58
 Run. 2.19
 Run. 1.805
 Run. 0.385
 Run. 17.8
 Run. 17.5
 Run. 17.5
 Run. 17.8

XI Stom when p. 29
 Run. 5.4 M
 Run. 5.04.40
 Run. 1.80.48
 Run. 3.80
 Run. 2.42
 Run. 0.58
 Run. 1.087
 Run. 16.5
 Run. 16.5
 Run. 16.5
 Run. 16.5

XII Stom when p. 29
 Run. 5.4 M
 Run. 5.04.40
 Run. 1.80.48
 Run. 3.80
 Run. 2.42
 Run. 0.58
 Run. 1.087
 Run. 16.5
 Run. 16.5
 Run. 16.5
 Run. 16.5

XIII Stom when p. 29
 Run. 5.4 M
 Run. 5.04.40
 Run. 1.80.48
 Run. 3.80
 Run. 2.42
 Run. 0.58
 Run. 1.087
 Run. 16.5
 Run. 16.5
 Run. 16.5
 Run. 16.5

1390

23. Bank 9260W
 Bank 93.30
 Nest + 180 ft
 1294
 dat 213
 } 0.43
 } 0.87
 gor: 3.00
 } 0.44
 } 0.87

IV Stomachs to June 23 (cont. of 1 June 23)

24. Bank 5410W
 Bank 188026
 Nest + 20101
 1924m
 } 2330
 } 2065
 } 1800
 } 0.865
 } 0.265
 } 0.53

25. Bank 5425W
 Bank 18551
 Nest + 1056
 } 321
 } 220
 } 101
 } 1.01
 } 202

R (cont. of 9.17.)
 26. 5.5m 45, 638.5, 195, 12
 Bank 800W
 Bank 880411
 Nest + 100161 (to ~~max~~ ~~max~~)
 } 3300
 } 2895
 } 1346
 } 1386

VI Stomachs other p. 26.
 27. 4.6. 638.5, 197.2, 11.13.5
 Bank 5320W
 Bank 420131
 Nest + 140
 } 330
 } 284
 } 0.91
 } 0.46
 } 0.95
 } 16.0
 } 1390

~~15.00~~

~~16.00~~

0.55

0.38

0.25

0.18

17. Bunker N 65° W
dumb 109° 0'
Menge + 5° 32'

gen. 3.00
tur. 25.25
det. 21.60
0.84 { 0.425
0.425

16. Bunker N 72° W
dumb 101° 25'
Menge - 2° 50'

gen. 3.3
tur. 3.05
det. —
0.50 { 0.25
0.25

Bunker N 72° W
dumb 101° 10'
Menge - 8° 45'

gen. 3.3
tur. 3.15
Menge. —
0.30 { 0.15
0.15

VI Station, by Ketchikan road Sta. 2
15.00 2.30, R. 0.35, 76, 21.5, 11.13.4

14. Bunker N 98° W
dumb 100° 26'
Menge + 6° 51'

gen. 3.0
tur. 2.58
det. 2.16
0.84 { 0.42
0.42

13. Bunker N 92° W
dumb 66° 41'
Menge + 4° 45'

gen. 2.5
tur. 2.30
det. 2.10
0.39 { 0.195
0.195

12. Bunker N 82° W
dumb 76° 48'
Ketchikan - 30° 26'

gen. 2.1
tur. 2.015
det. 1.940
0.16 { 0.085
0.075

Other

~~1380.0 (L. brown)~~
~~1365.0 (greenish brown)~~
~~1346.0 (K. K. P.)~~

Jump from 8.00

1.30. 636.5. # 24.5. # 14.8.
 for ... of ...
 II ft. ...

M. ... N 41. W
 2440.6
 2.77
 3.05
 0.28
 0.21
 0.55
 2.50

1369

Y ...
 2280.26
 2.60
 2.41
 0.19
 0.38

1334
 2280.25
 2.50
 2.25
 0.50
 0.25
 0.42

1328
 2280.25
 2.50
 2.25
 0.50
 0.25
 0.42

1318
 2280.25
 2.50
 2.25
 0.50
 0.25
 0.42

II *Stenocercus* from site 2

63015 #26.5

tt. 17?

3. *Baneta* N 443

turns 227° 25'

Measure - 18° 20'

depos

turns

for gmina 260

248

286

0.12 { 0.12 } 0.24

4 *Baneta* N 45W

turns 235° 30'

Measure - 18° 45'

depos

turns

for gmina 330

314

398

0.156 { 0.159 } 0.315

1457

III *R. dem gria* 4 13

5. 1/4 hr. 630 to 28.5

Baneta N 45W

turns 347° 8'

Measure: - 23° 41'

depos:

for gmina: 345

turns: 338

331

0.07 { 0.07 } 0.14

6. *Baneta* W 46W

turns 316° 25'

Measure - 25° 10'

depos

turns

for gmina 34

30

0.1 { 0.1 } 0.2

Down cast morning rocks, etc., traffic through

me tracks

7. *Baneta* N 46W

turns 316° 31'

Measure - 25° 45'

depos

for gmina 240

243

0.27 { 24.3 } 24.3

1458

11/52

Barracks N 84° W
numbers 318° 39'
Wentworth - 40° 21'

g 310
316
318
319
320
321
322
323
324
325
326
327
328

Barracks 88° W
numbers 314° 49'
Wentworth - 30° 16'

g 2435
2440
2445
2450
2455
2460
2465
2470
2475
2480
2485
2490
2495
2500

1. I. ... no green:

Barracks N 89° 30 W
numbers 312° 47'
Went. +10° 2'

2) Barracks N 110°
Barracks N 30° 30' W
numbers 10° 47'
Wentworth 5° 38'

30° 30' 14

5
11
4
3
11

13. Buena Vista S 10° W
 Buena Vista 380° 22'
 Mercury + 110° 41'

from gun: 300
 vol: 1.23
 dist: 2.12

0.88 }
 0.89 }
 1.77 }

12. Buena Vista S 80° 30' W
 Buena Vista 328° 30'
 Mercury + 110° 22'

from gun: 3.0
 vol: 2.33
 dist: 1.65

0.67 }
 0.68 }
 1.35 }

11. Buena Vista S 40° E
 Buena Vista 318° 42'
 Mercury - 0° 44'

from gun: 3.200
 vol: 2.710
 dist: 2.225 (0.485)

0.49 }
 0.75 }

10. Buena Vista N 60° W
 Buena Vista 740° 30'
 Mercury + 40° 46'

from gun: 2.50
 vol: 2.05
 dist: 1.60

0.45 }
 0.95 }
 0.90 }

9. Buena Vista N 59° 50' W
 Buena Vista 80° 11'
 Mercury - 0° 61'

from gun: 2.65
 vol: 2.24
 dist: 1.88

0.38 }
 0.39 }
 0.77 }

8. Buena Vista N 59° 50' W
 Buena Vista 80° 11'
 Mercury - 0° 61'

from gun: 2.65
 vol: 2.24
 dist: 1.88

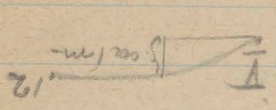
0.38 }
 0.39 }
 0.77 }

7. Buena Vista N 59° 50' W
 Buena Vista 80° 11'
 Mercury - 0° 61'

from gun: 2.65
 vol: 2.24
 dist: 1.88

0.38 }
 0.39 }
 0.77 }

0.160 }
 0.575 }
 0.165 }
 0.235 }
 0.900 }
 0.190 }



48.81
 30.301
 5.303
 48.81
 30.301

12. Order of items being worked on
 money is exp. prob. given.

5.35, 6.24, 13.14, 10, 15.00
 12. Barometric pressure in boy, mean pressure

22.0
 16.25
 10.50
 1.150
 0.575
 0.575
 0.575
 1.150
 10.50
 16.25
 22.0
 10.50
 110.051
 13.40
 544.08

24.70 }
 0.365 }
 0.350 }
 0.350 }
 0.105 }

Lambun 113026, km + 80.50m

Amok 14703

10. Han to Lanna
in the morning from night

0.10	3.30	3.25	0.10
0.20	3.15	3.15	0.10
	3.15	3.15	0.10

Amok - 28.56

Lambun 221050

Banda N 230 B W

15.21

5.15 6.24 15.2 11

~~15.03~~

for 3.10 km going morning ground

1.87	0.77	1.56
3.43	0.79	
9.64		

6.26.9, 16.18, 11

Mengkal + 15.12

Lambun 100 50

Amok 52303

8 Gorn... on part part 7

Handwritten scribbles and numbers at the bottom of the page.

847.0792

1020.28
1200
0.805
0.408

Wentworth + 4.33
Amber 1020.28
Banks 5240.2

7. Rowland Dr from ...
Docu

5 m ...
for ...

0.197
0.198
0.395
0.480
0.678
0.875

Wentworth - 2.42
Amber 860.30

0.107
1.145
1.9
1.25
850
5.50
810.5
Wentworth - 4.10
Banks 890.5

Wentworth 6.29.5
4.5h 76.15.90 at 12.10
[Wentworth + ...]

5. ...
3.4m ...

1465
1435
1433
H. 1435
H. 4.

III

" spinners 1.6504902
 " doorn 0.656
 " 0495
 " 1.169
 " + 75.281
 " 187.401
 " 9.2.5 M

4) Houtenro to terre
 Houtenro menen drey of vort

3.20x 632.8
 16.4 13.21
 1418
 " 11.633
 " doorn 0.408
 " spinners 0.18450224

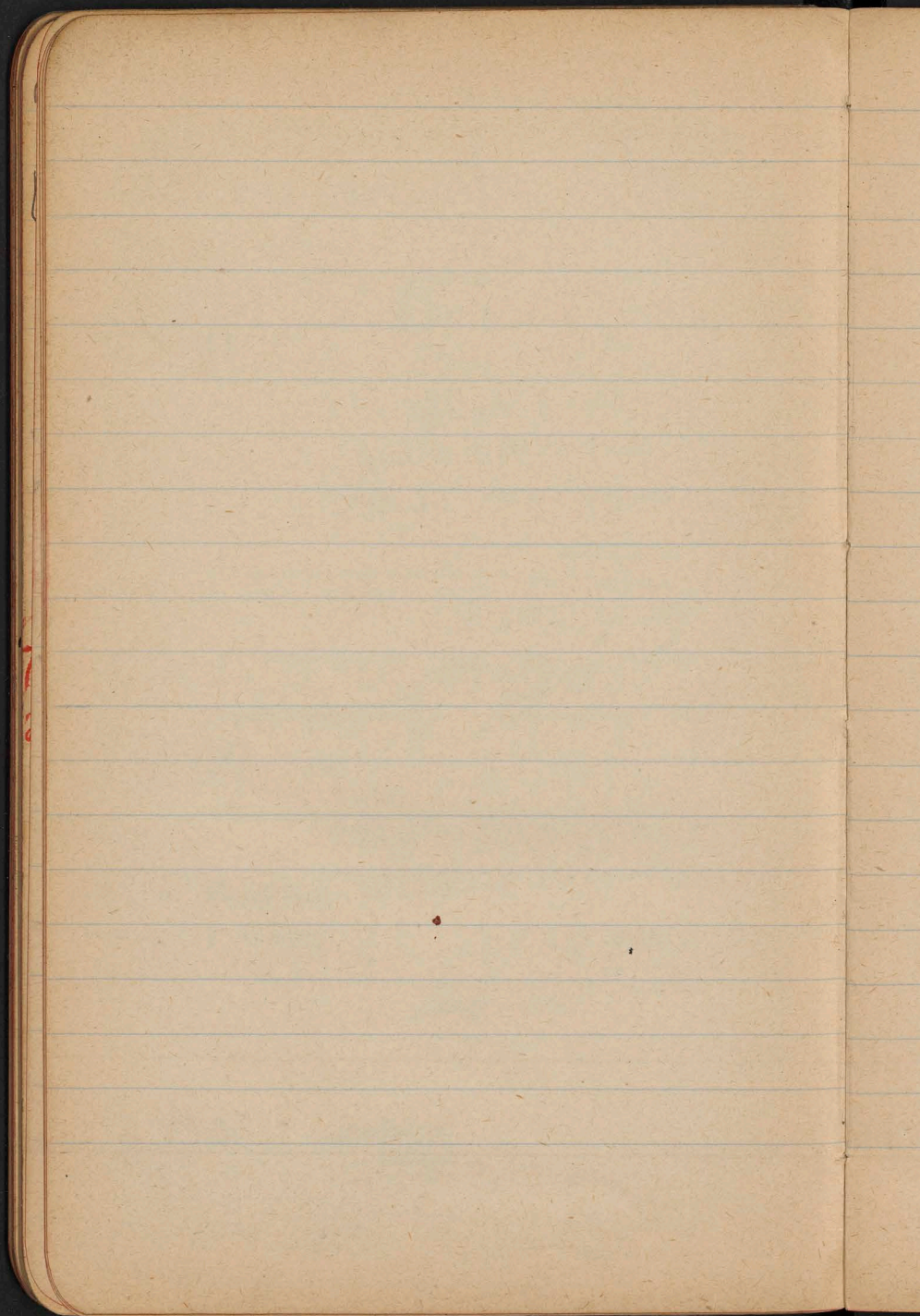
II 3

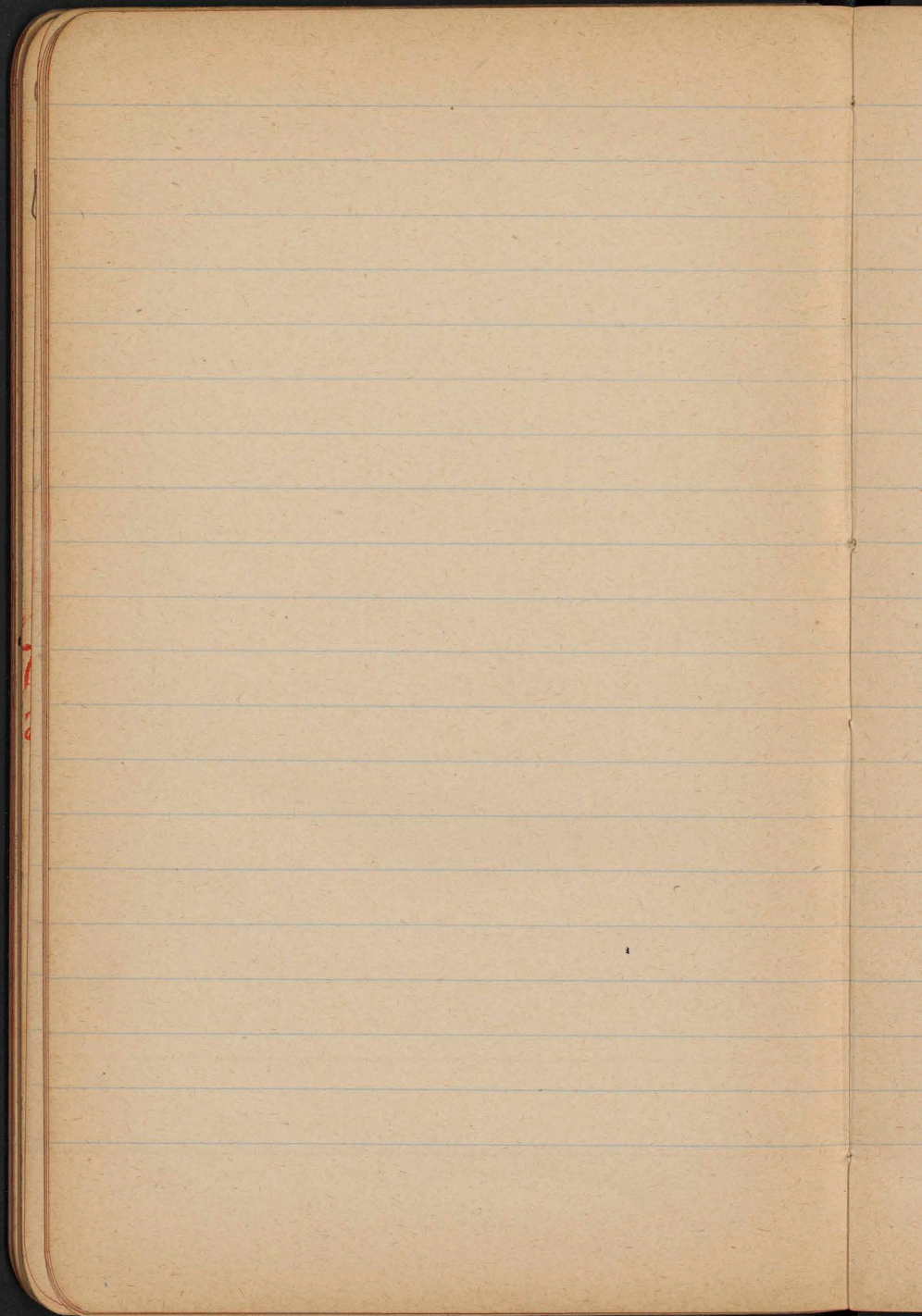
polytrale	-0016
4) Houtenro to terre	
Houtenro menen drey of vort	
Buata: N 2.8	
Buata: 187.251	
doorn	0.995
spinners	0.9

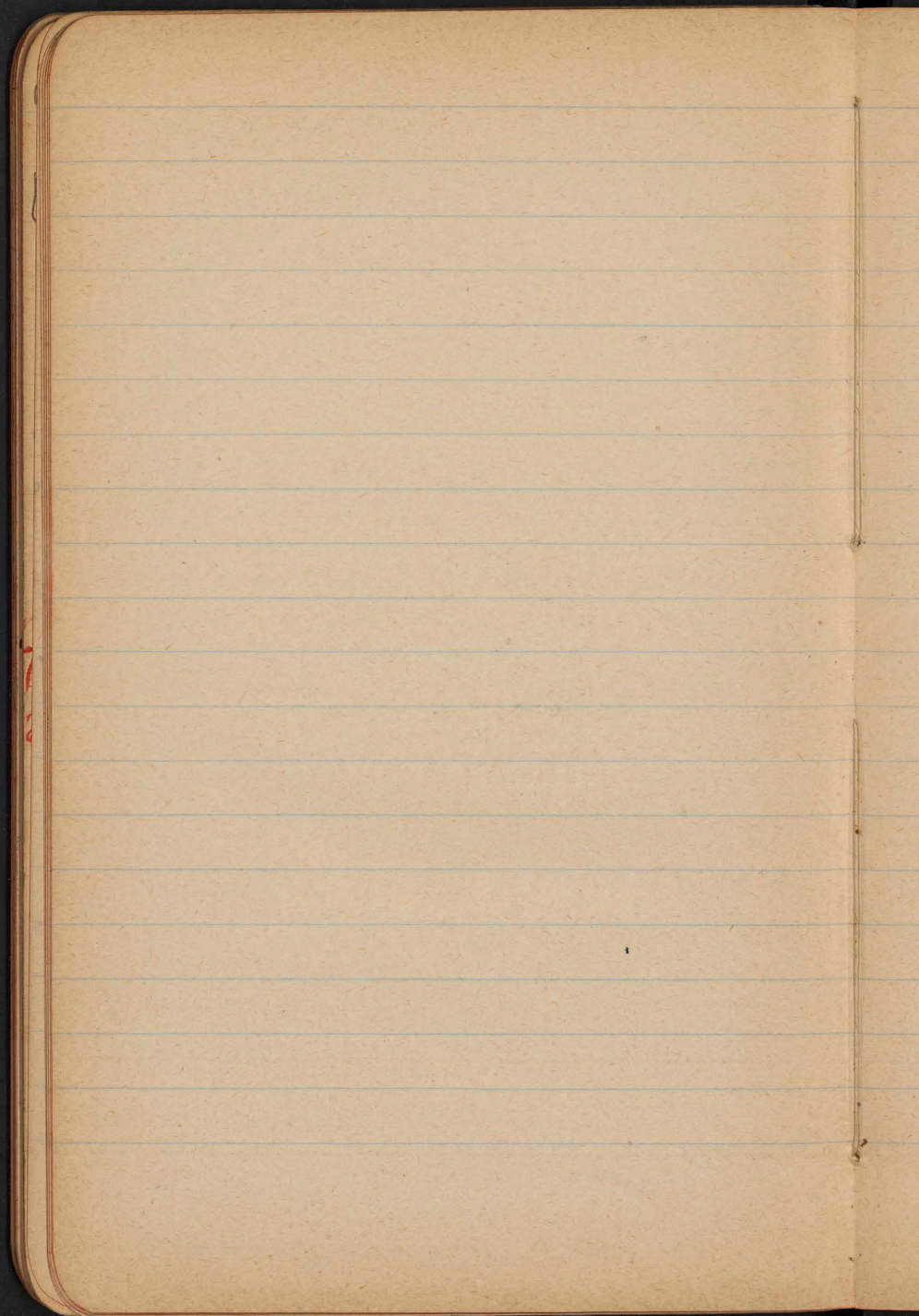
f. hinkil &

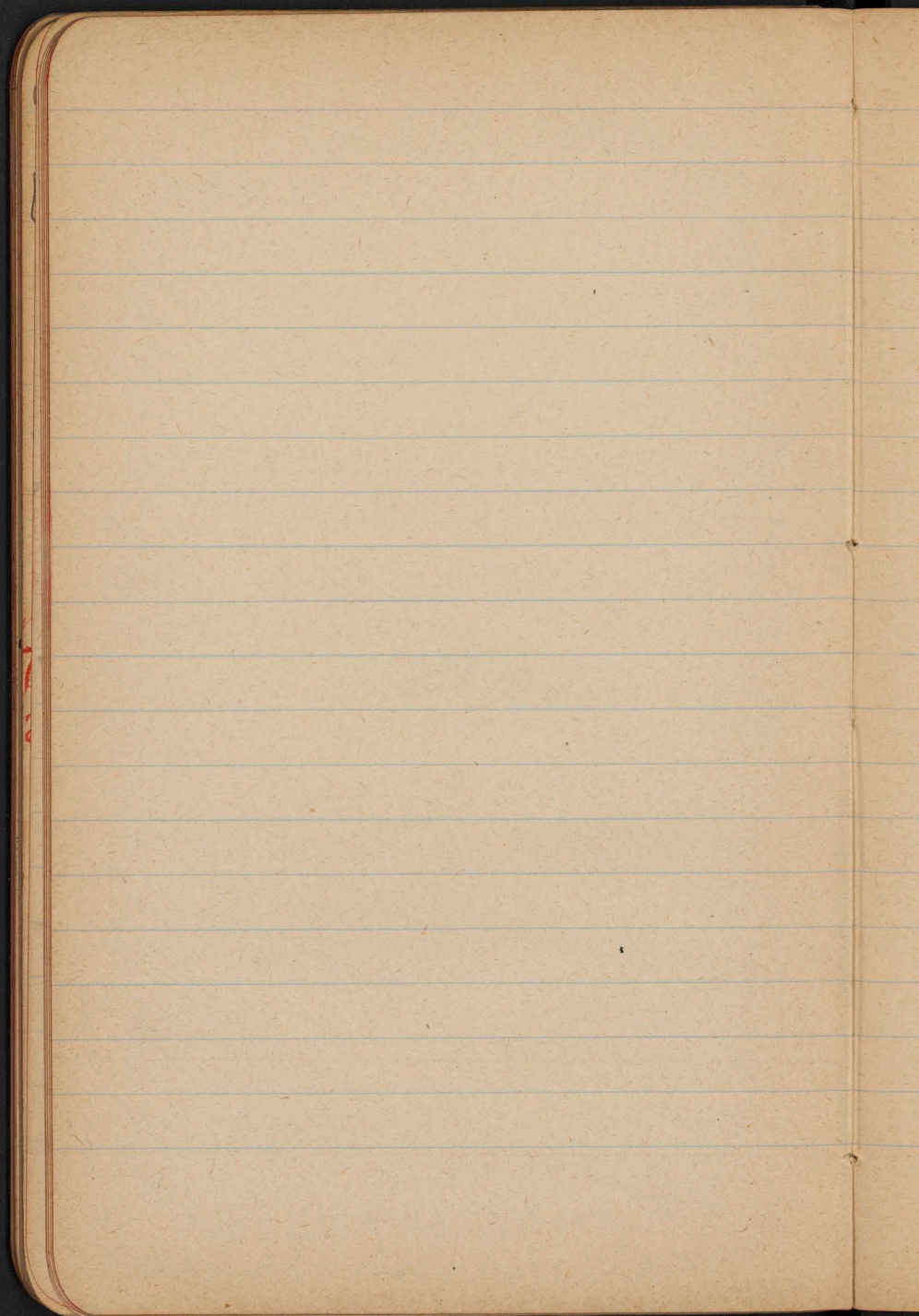
de

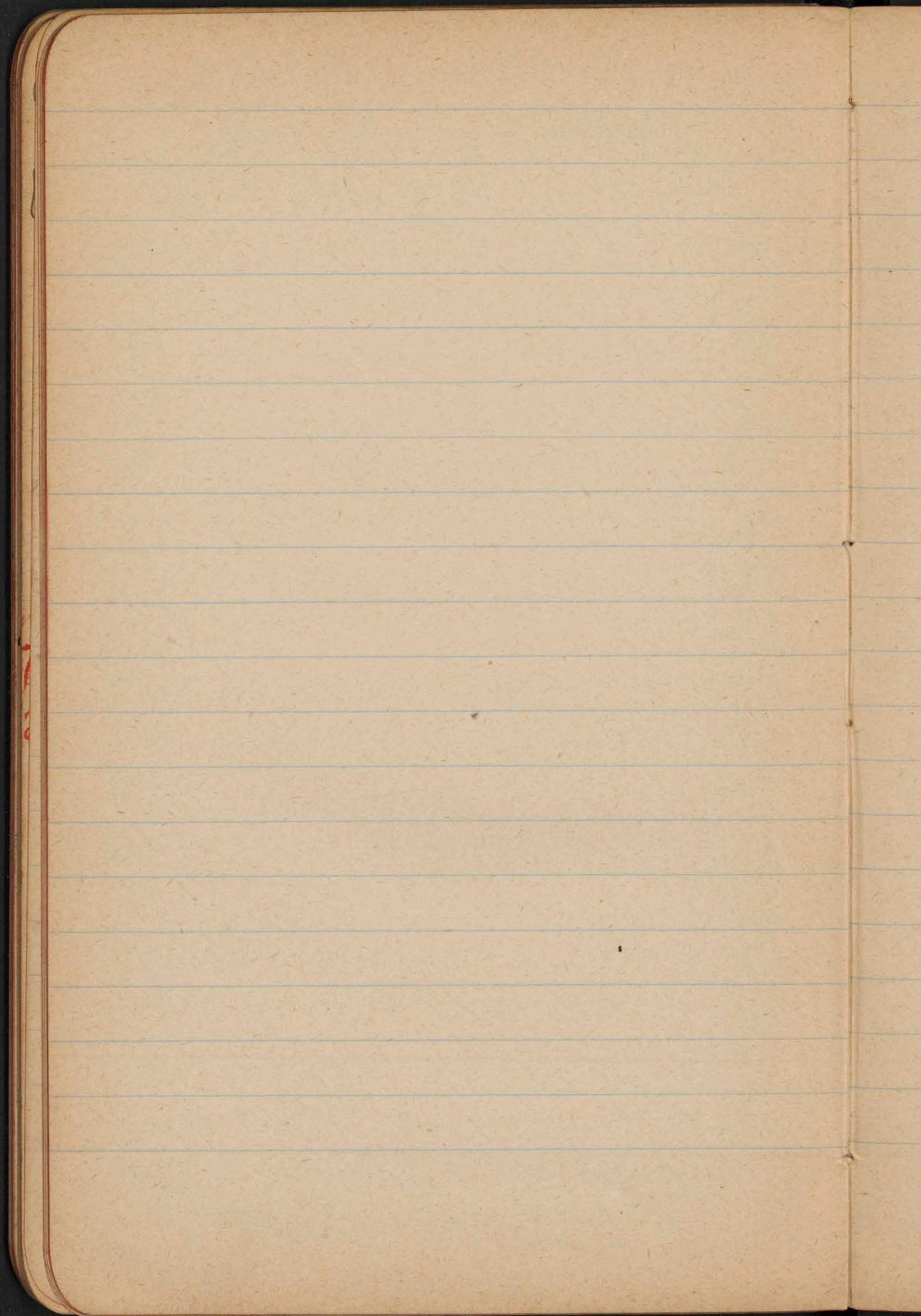
M
 13
 7
 M
 5
 6
 M
 2
 13
 5
 M

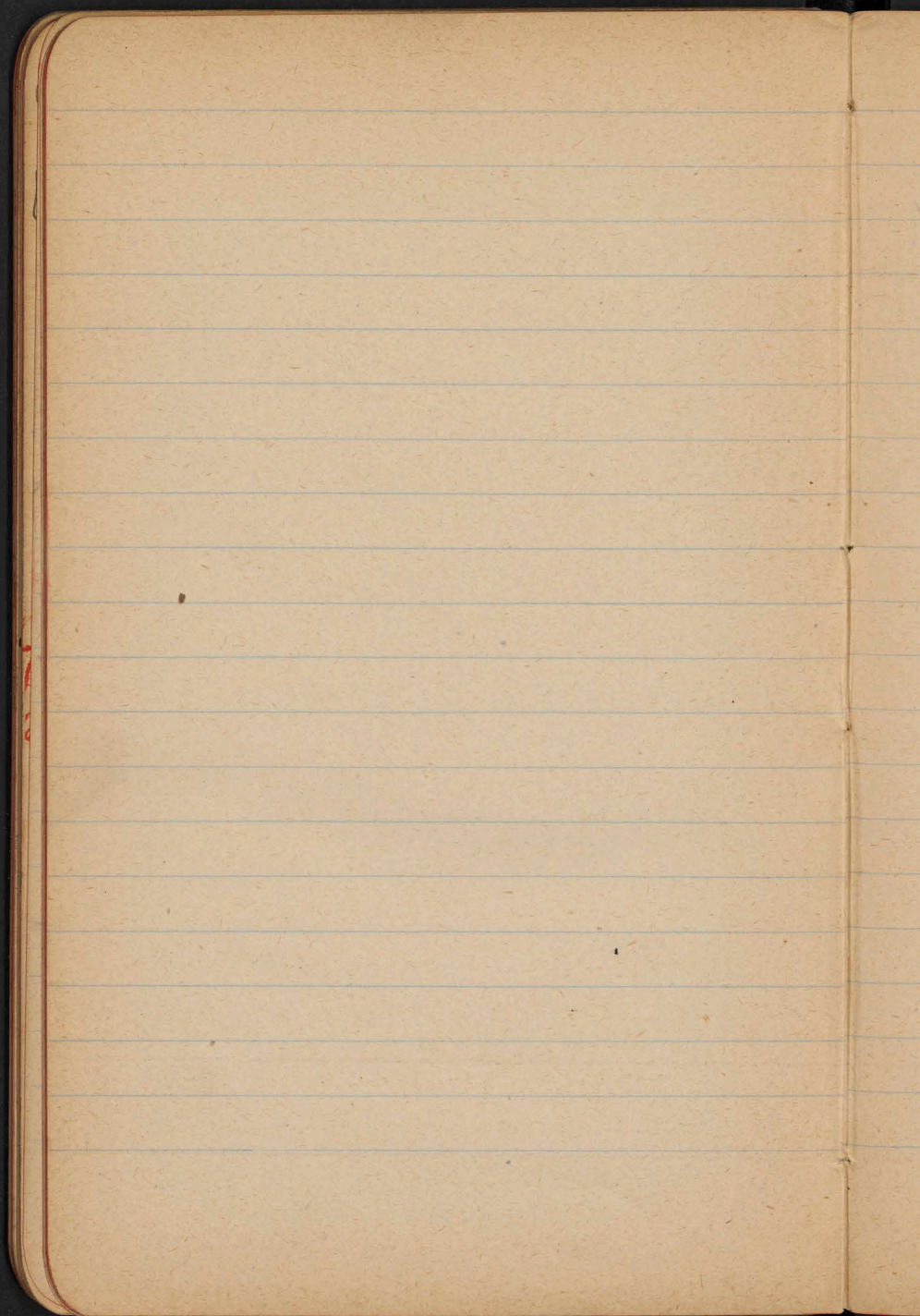


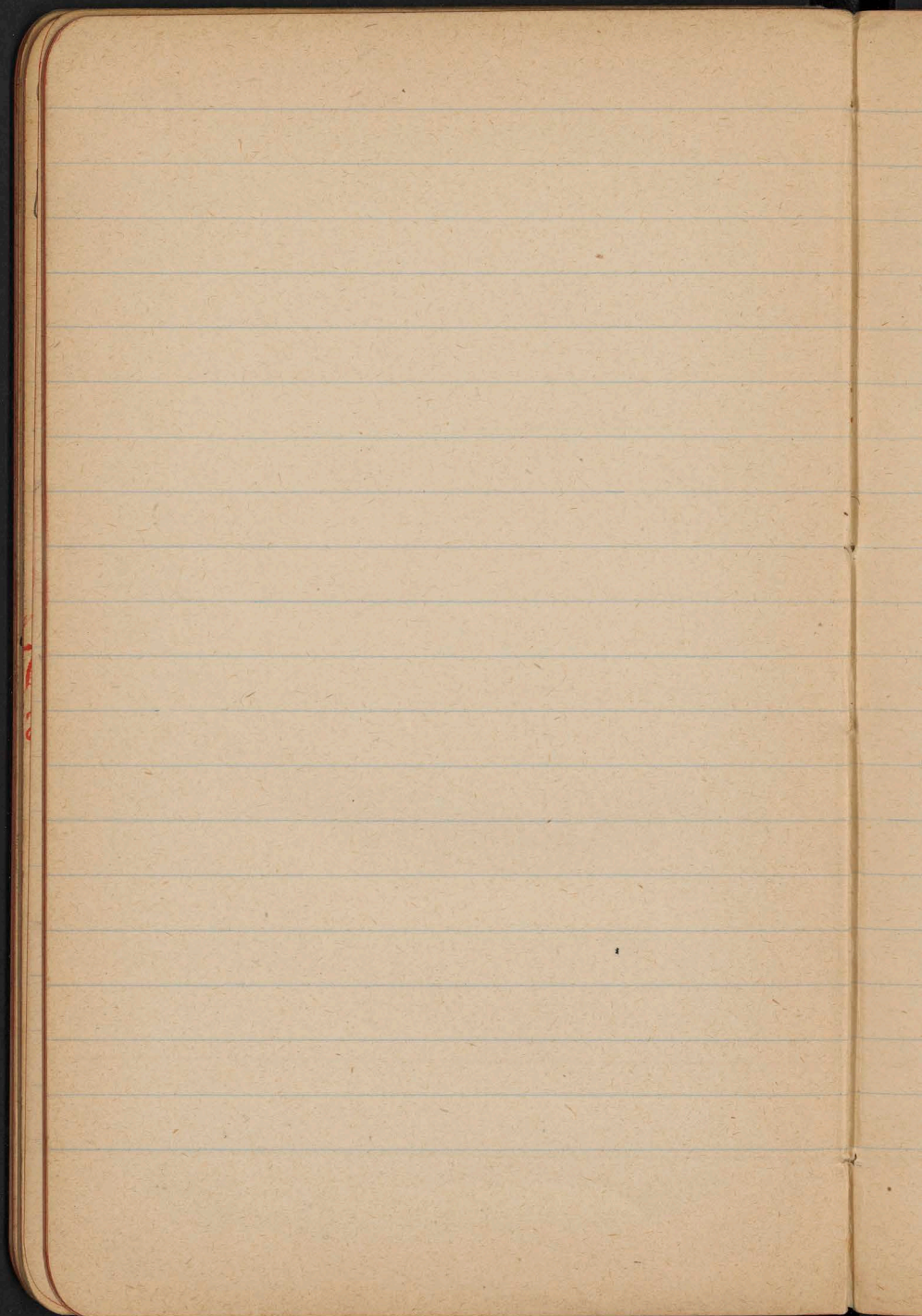


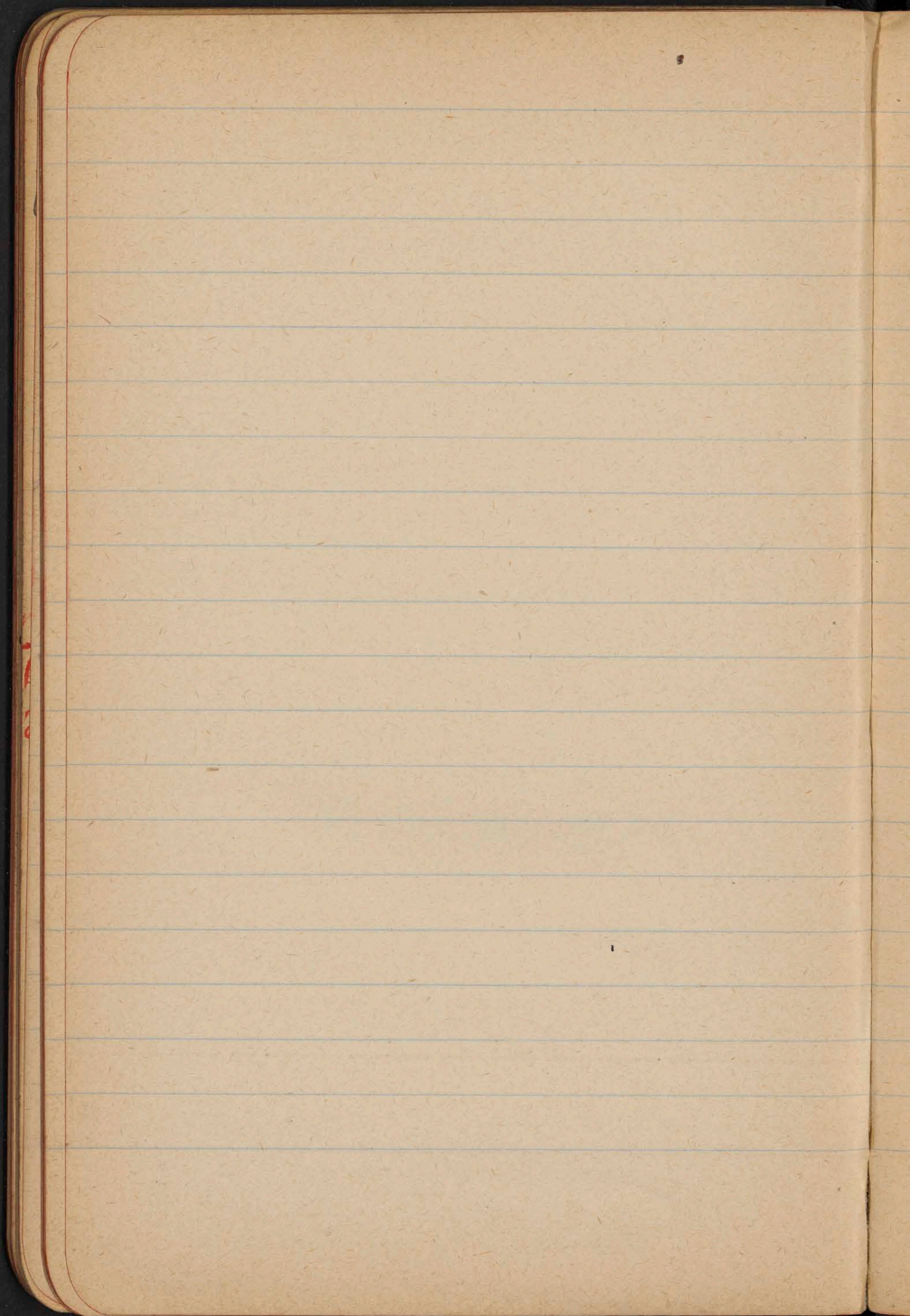


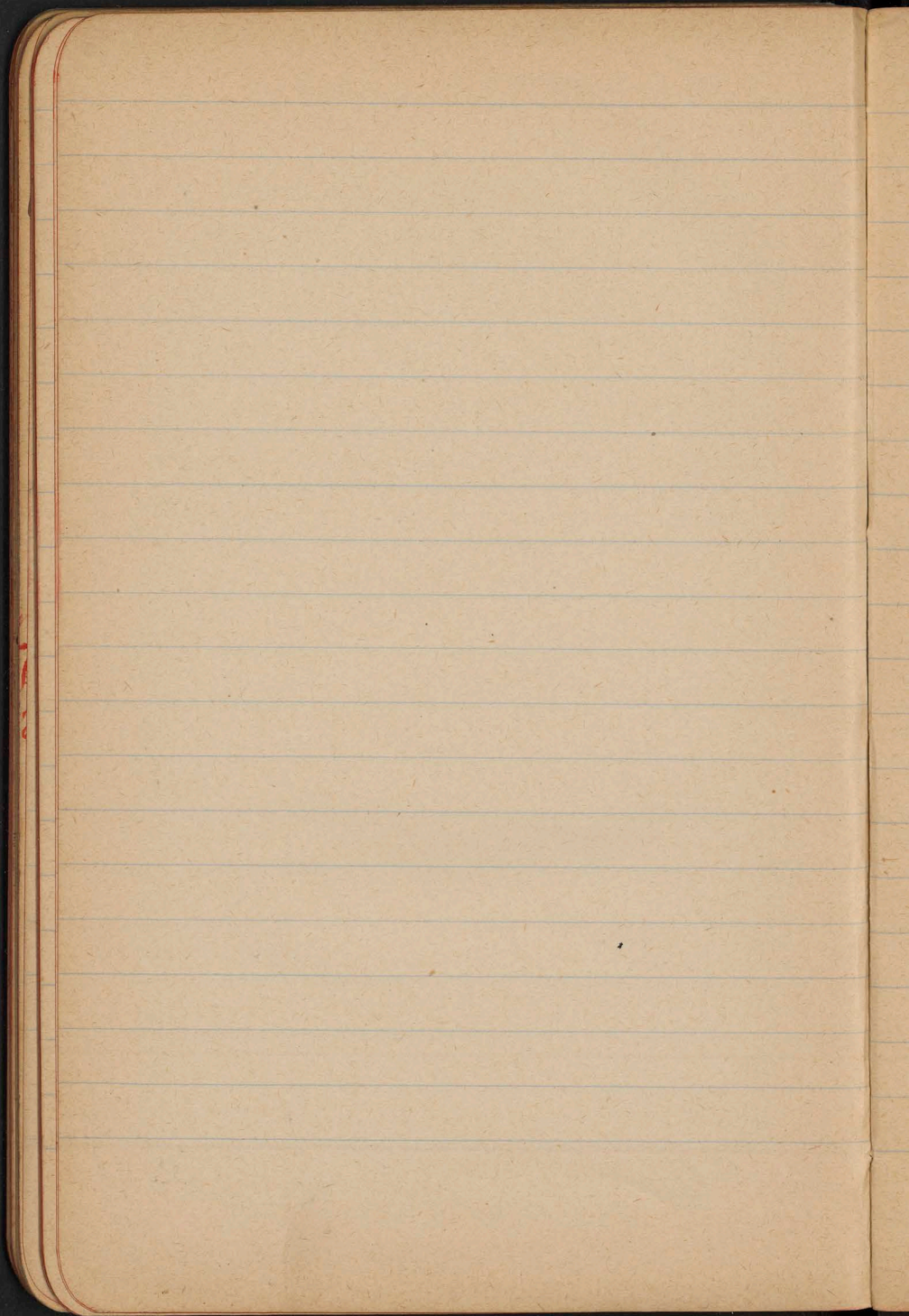


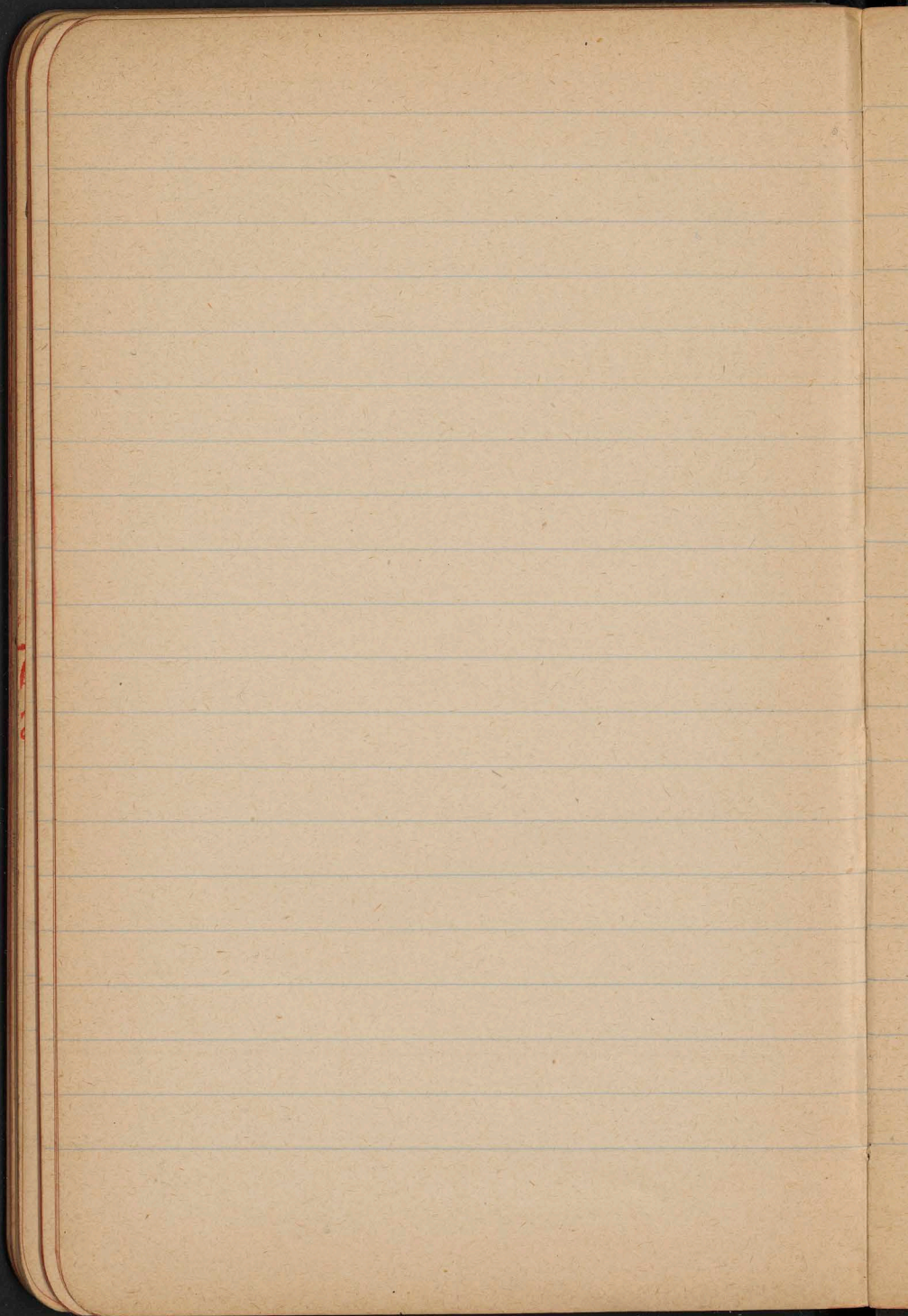


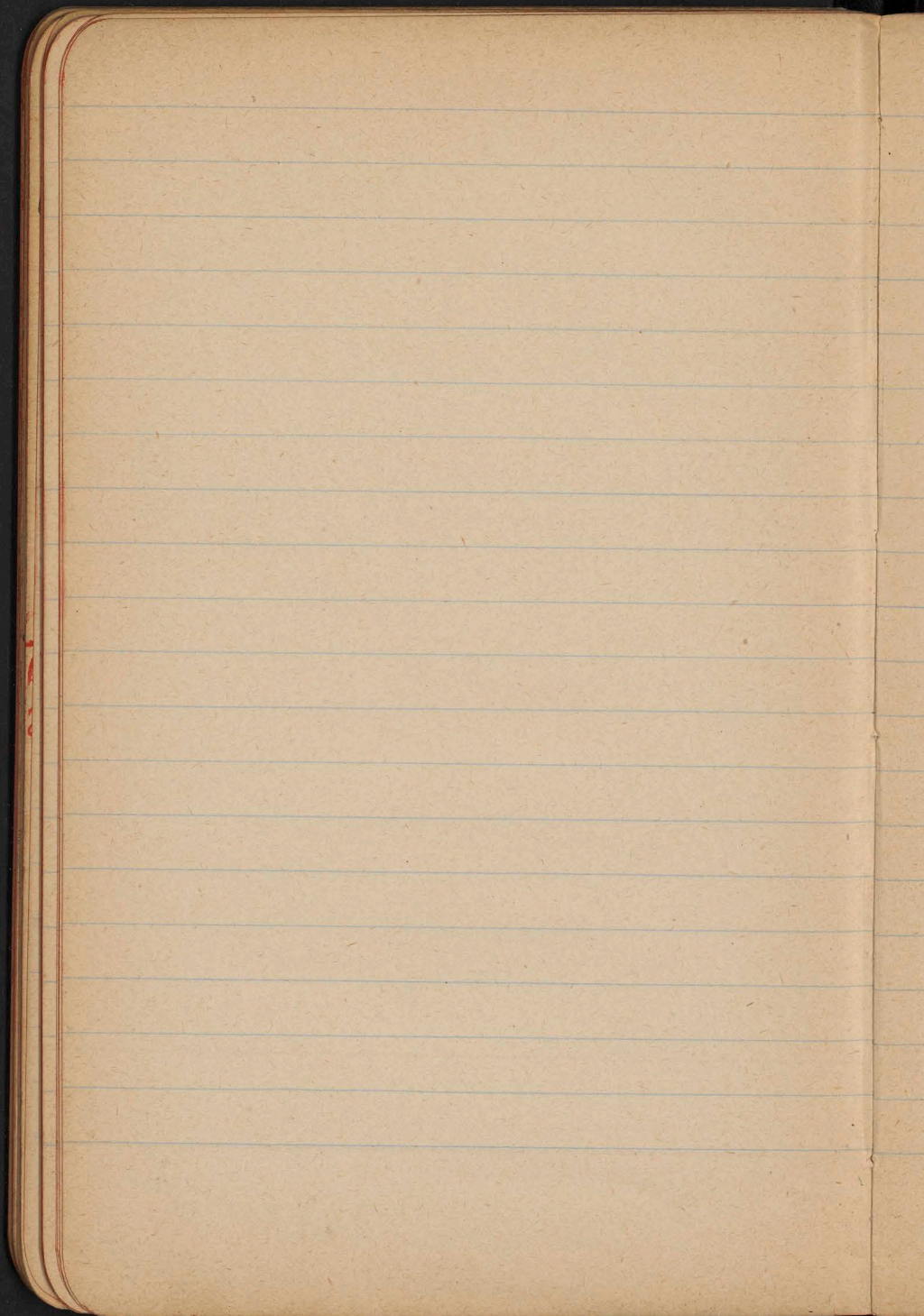


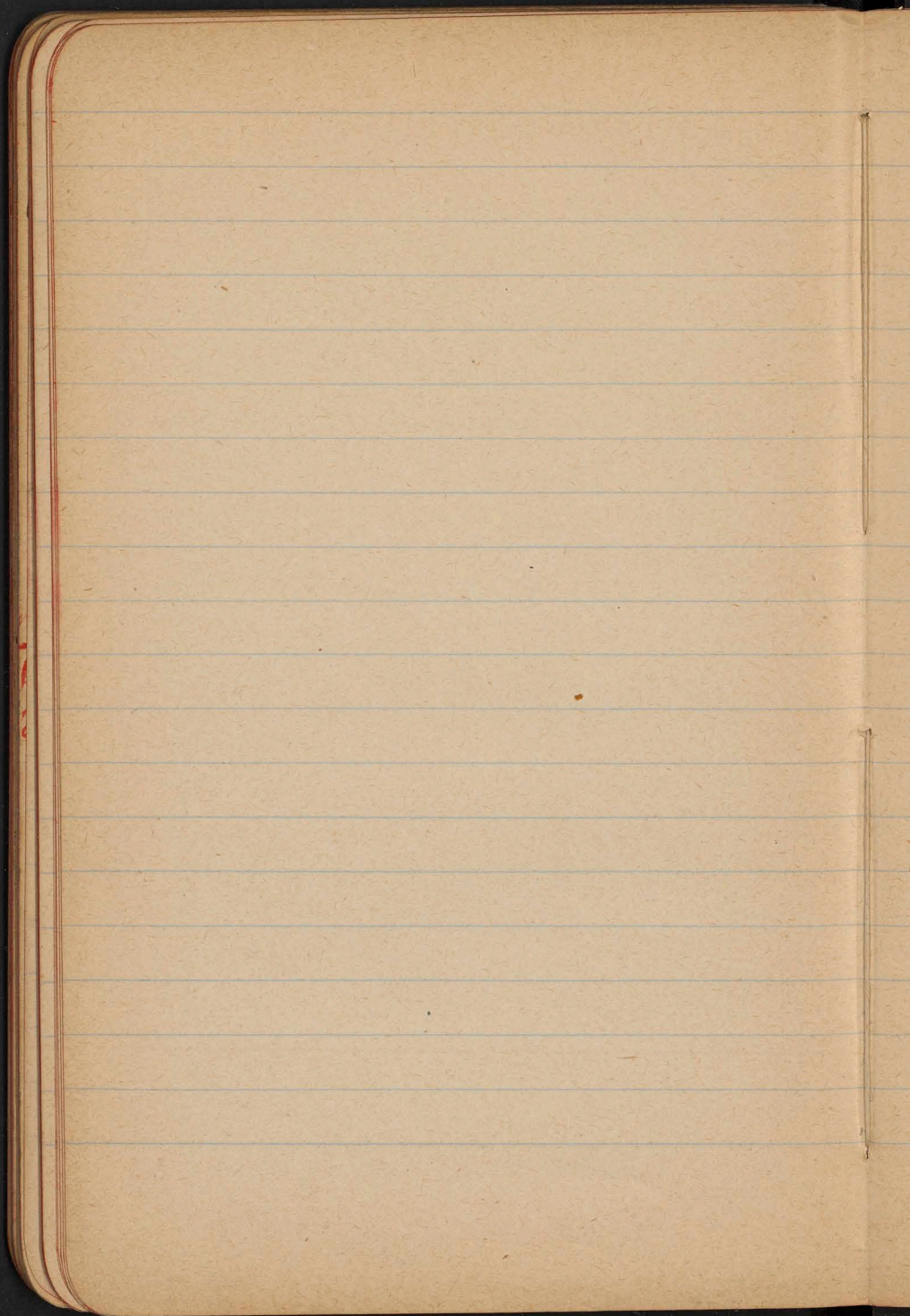


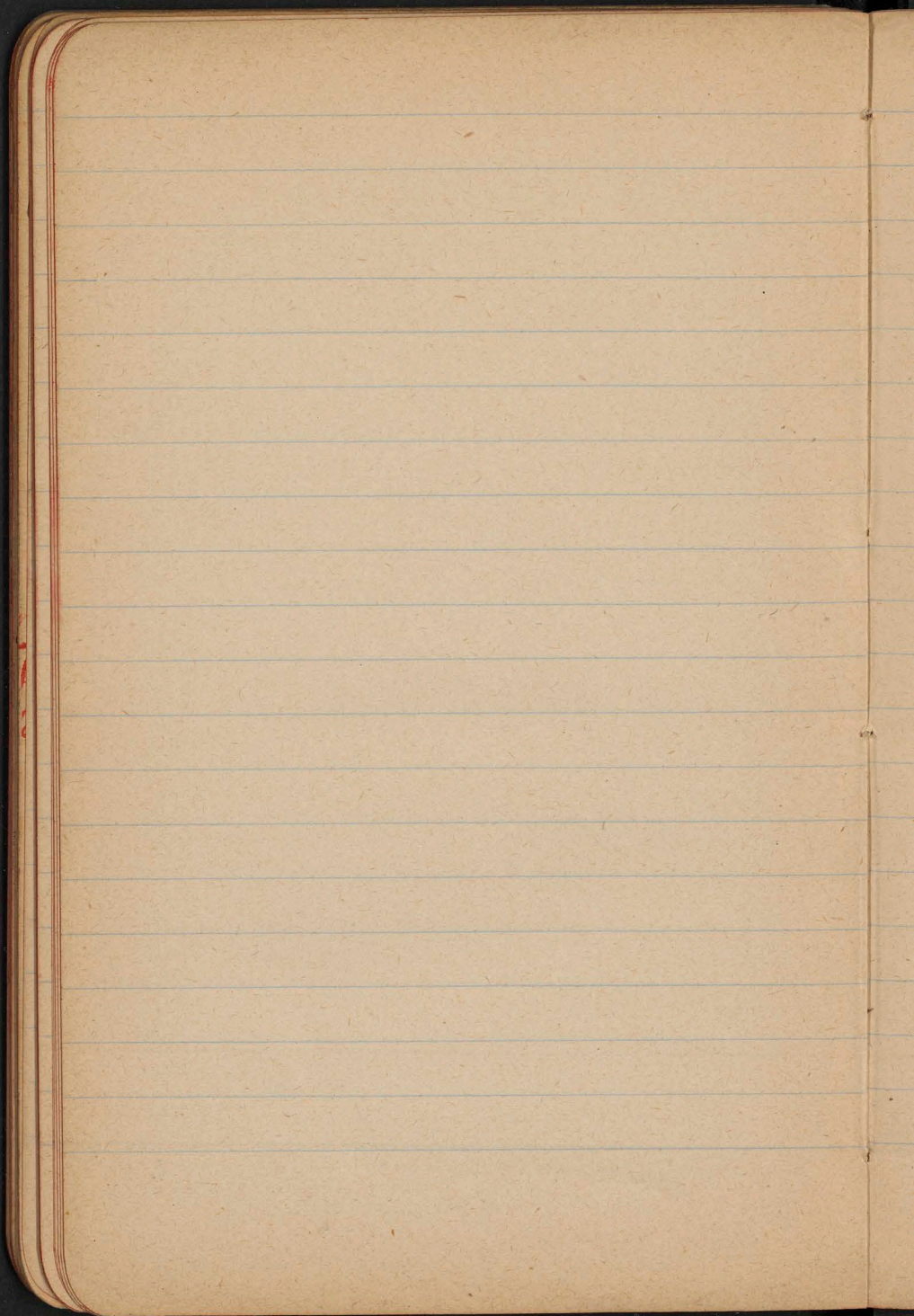


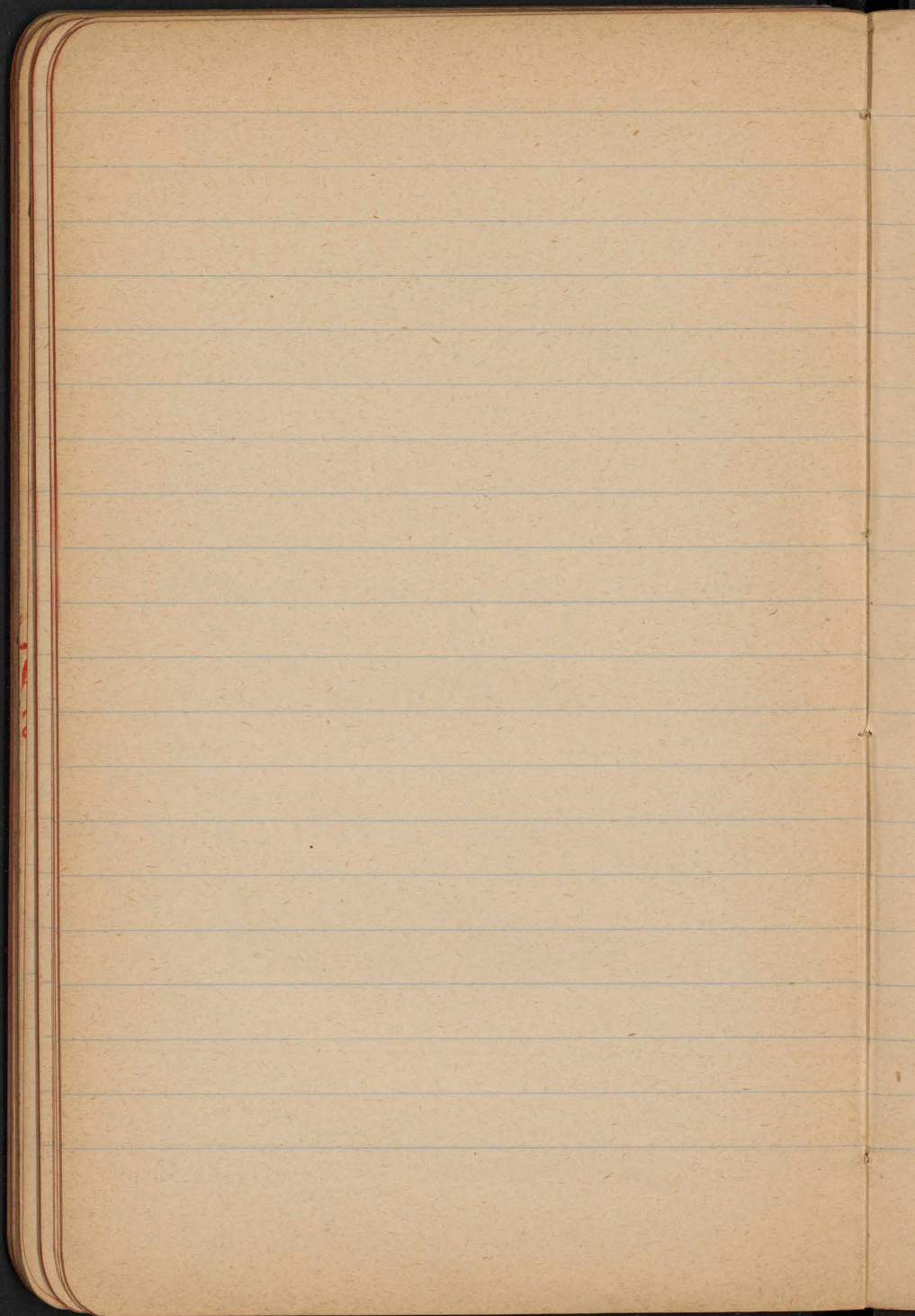


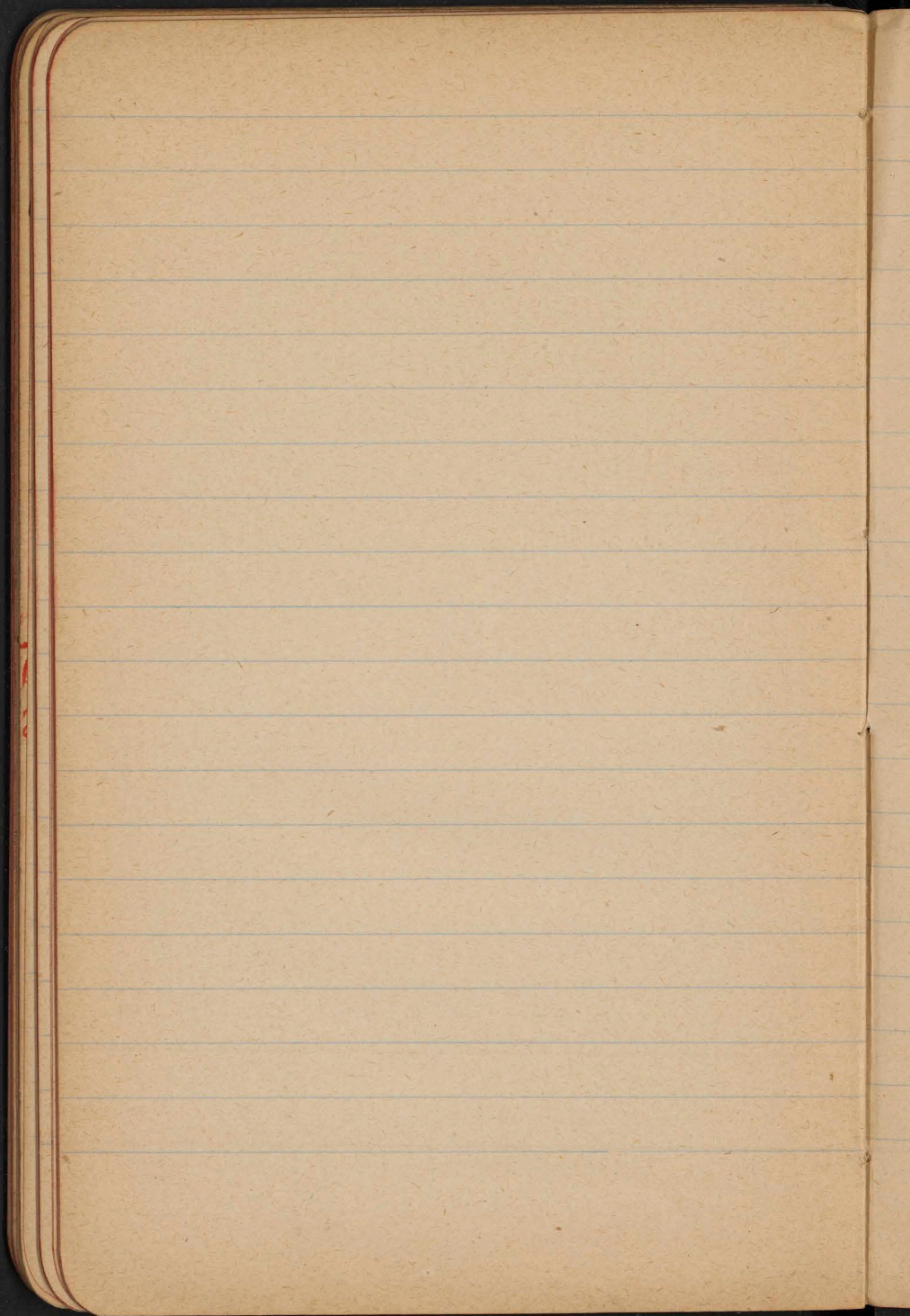


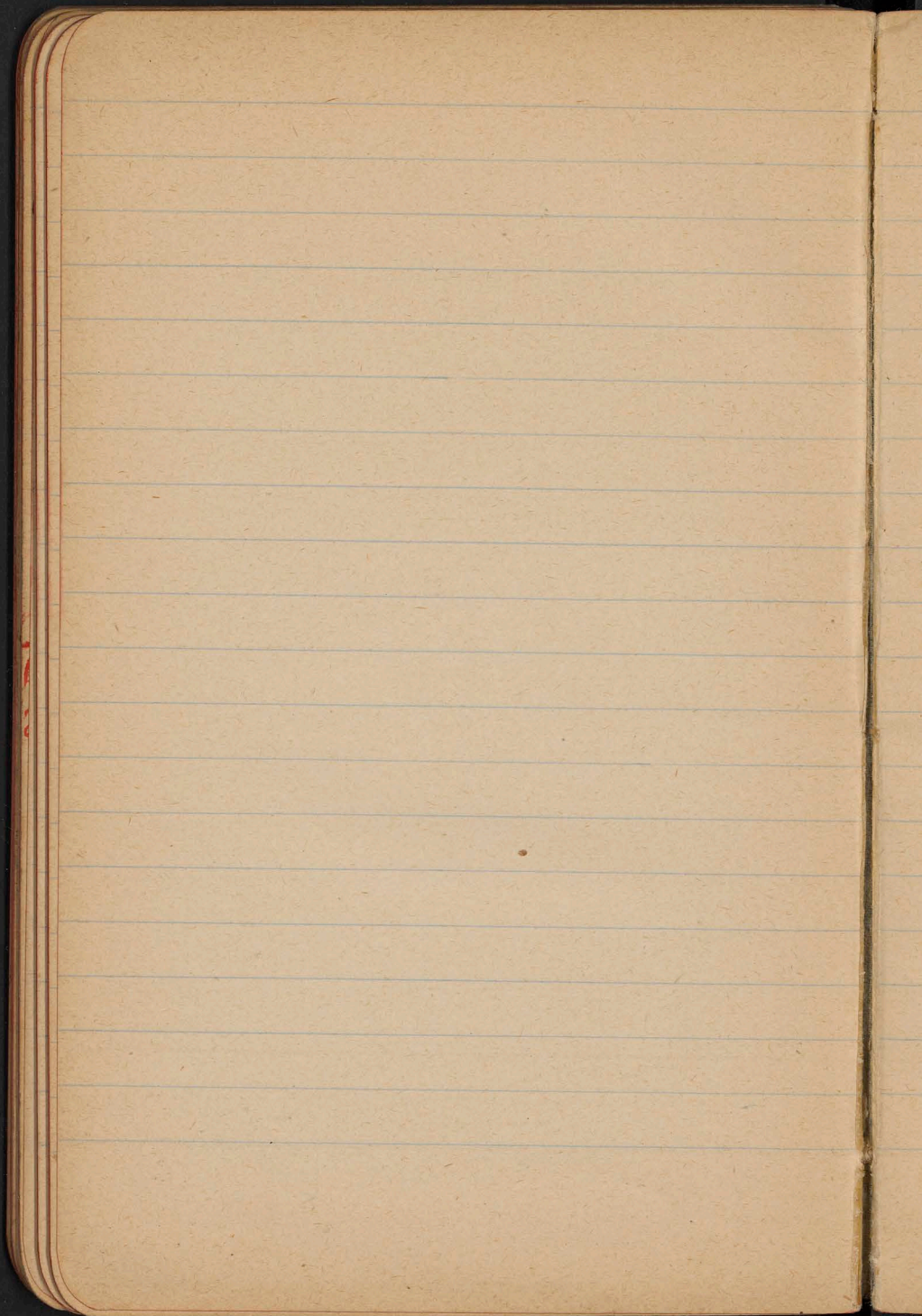


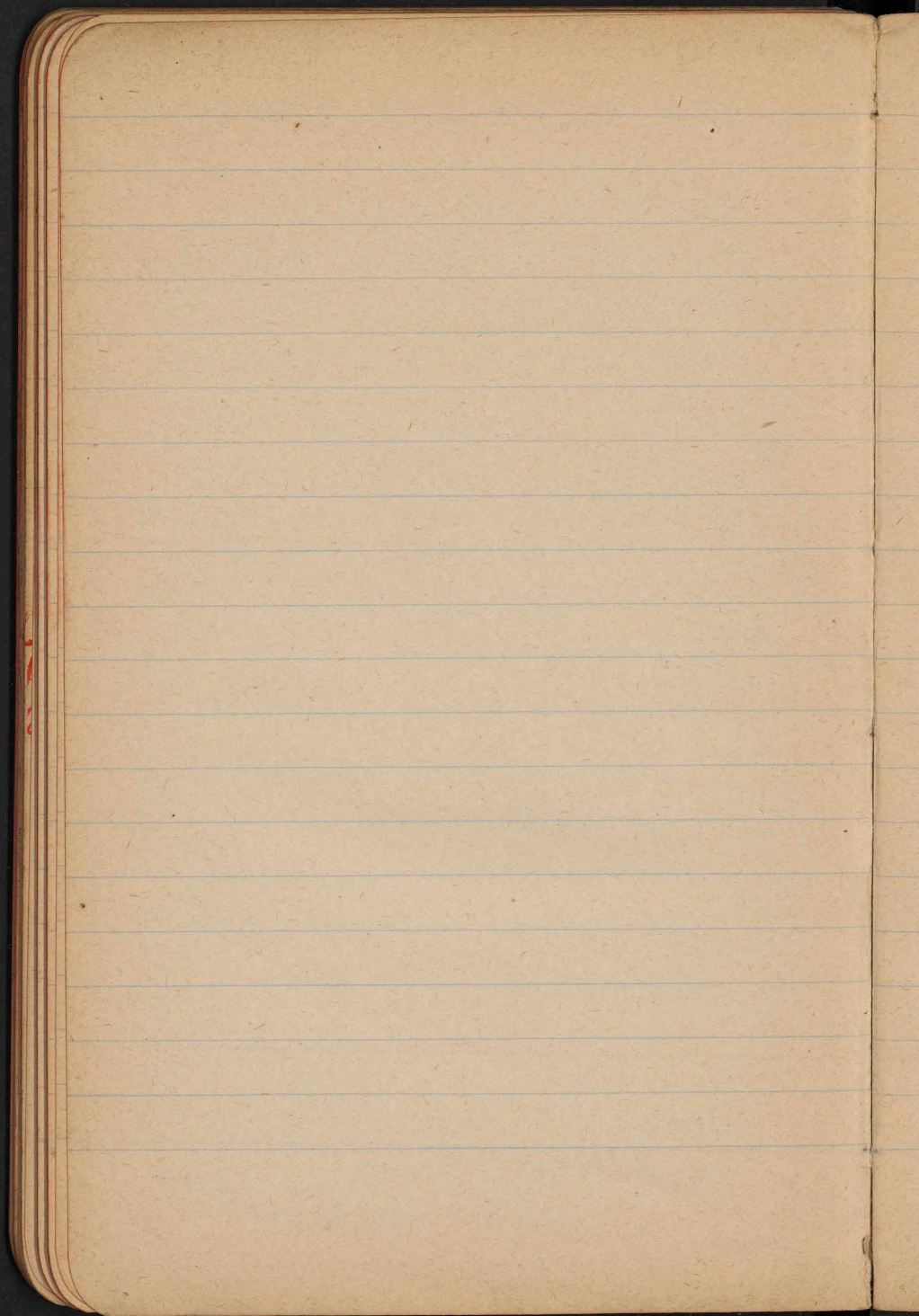


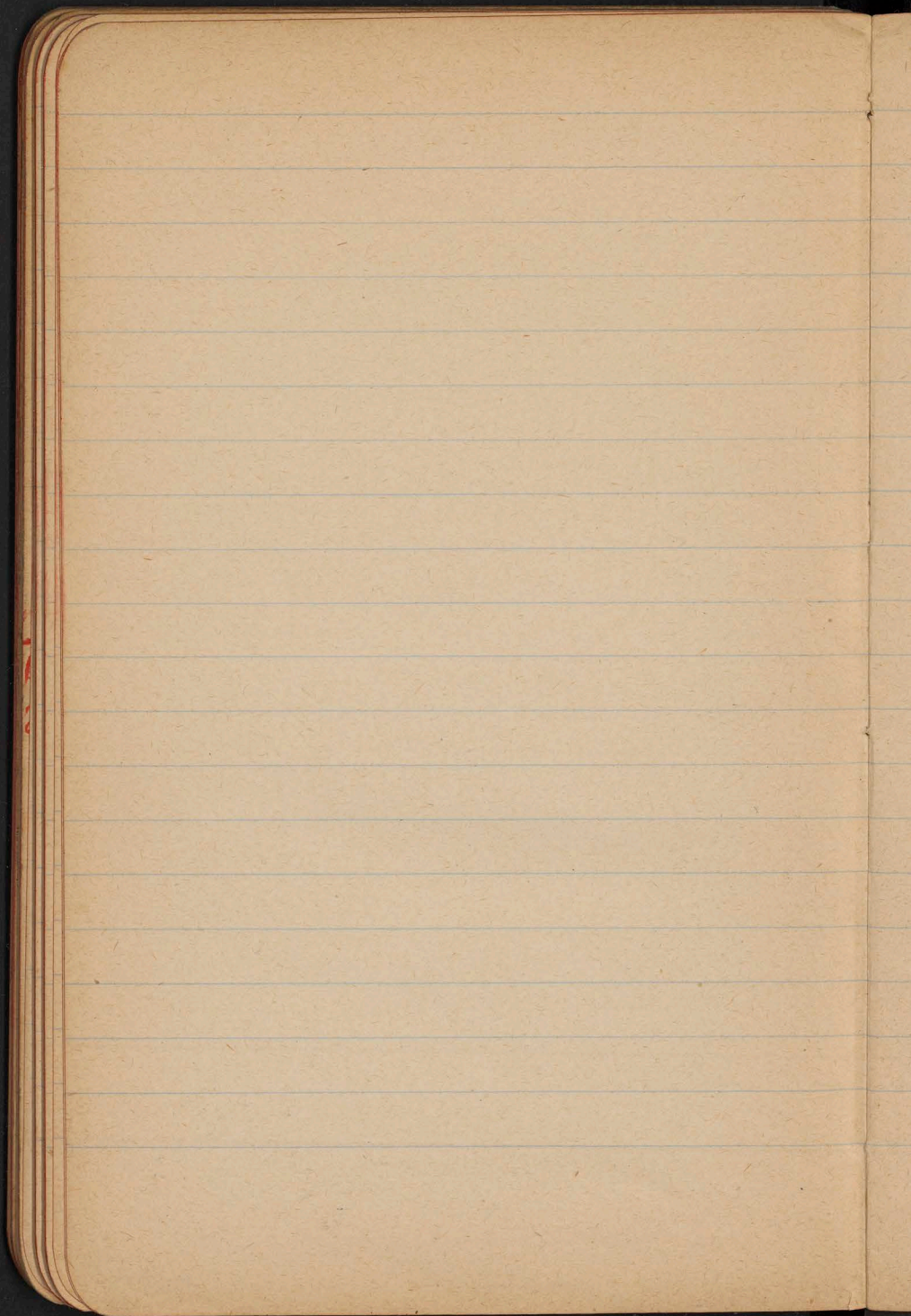


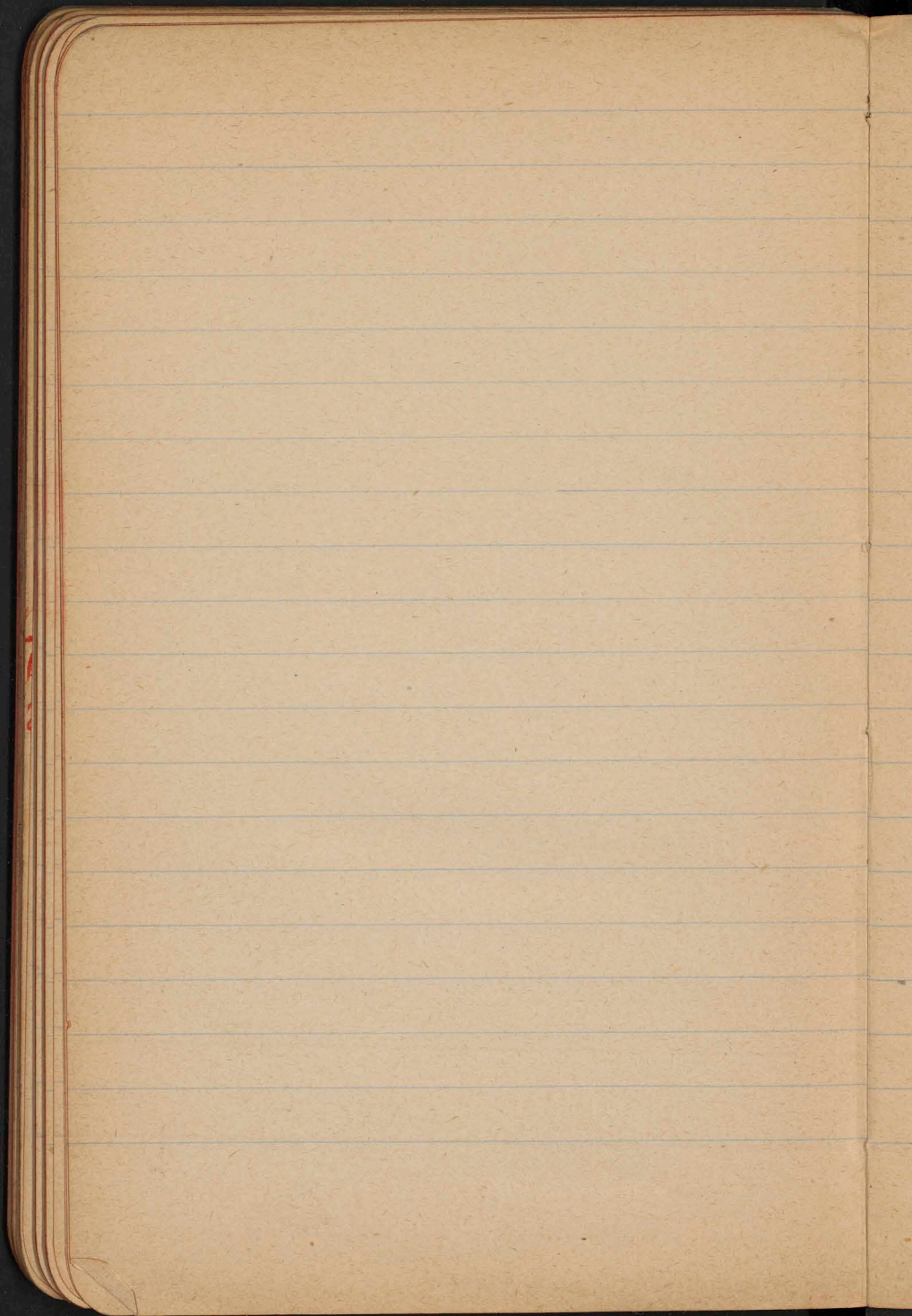


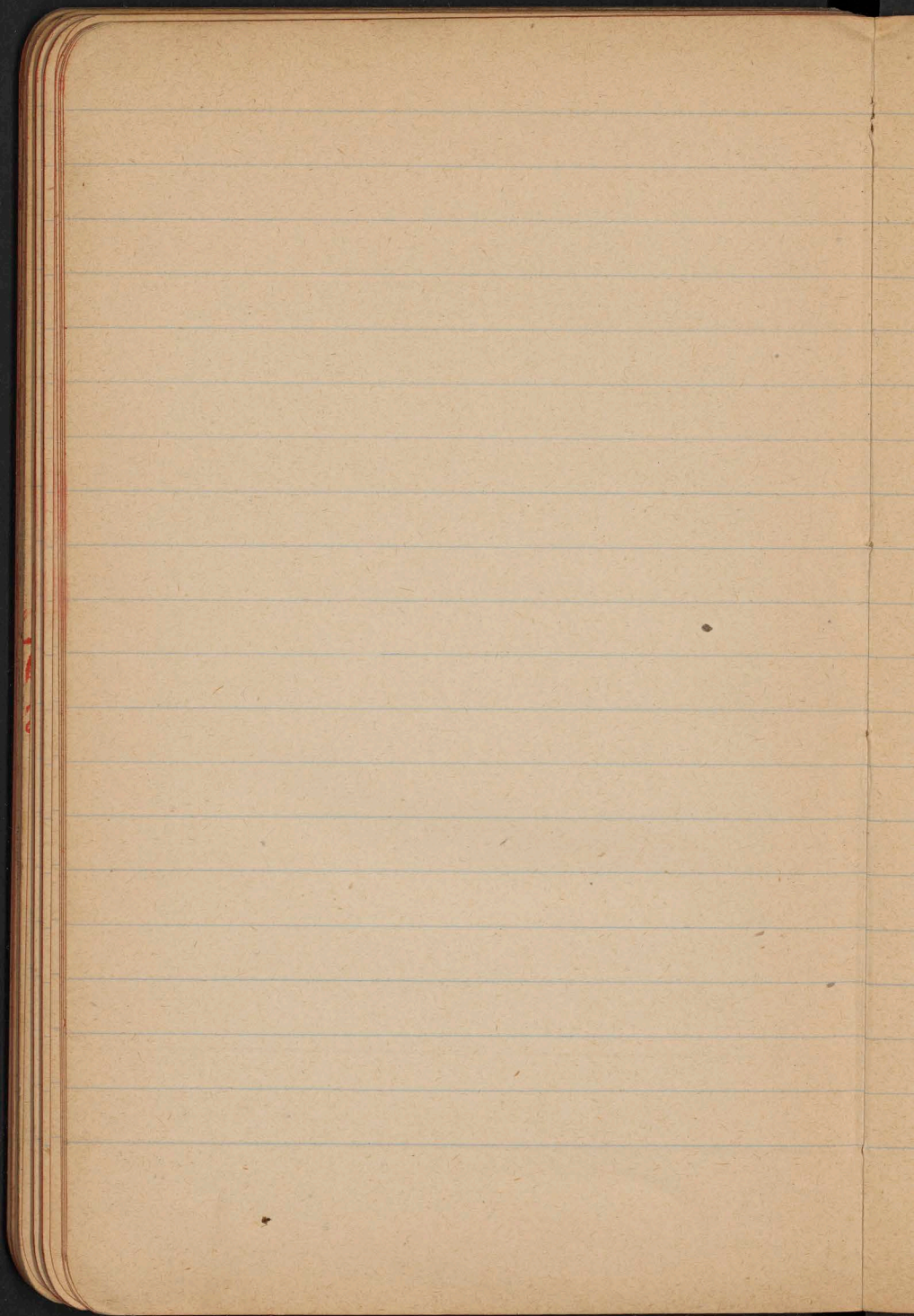


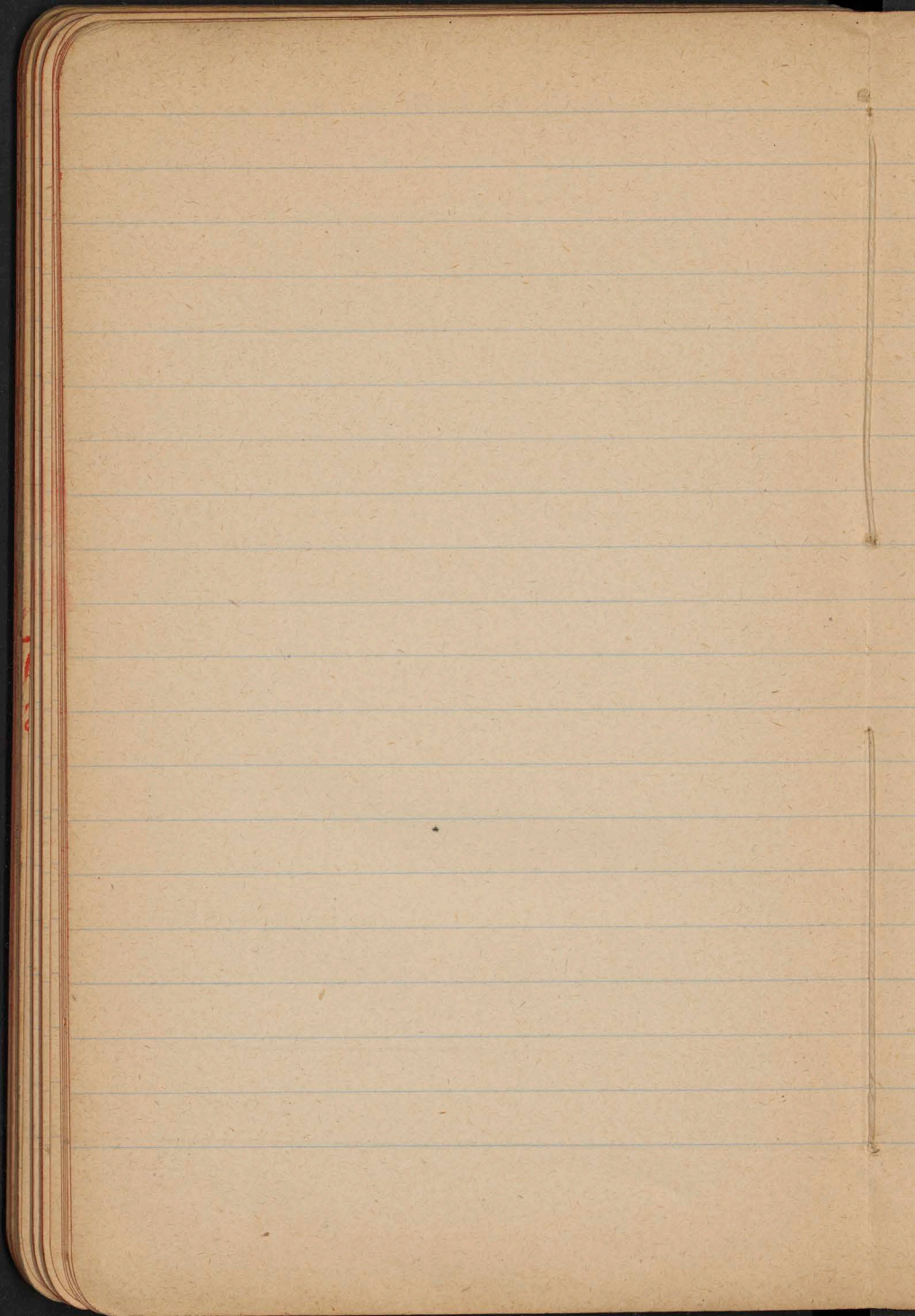


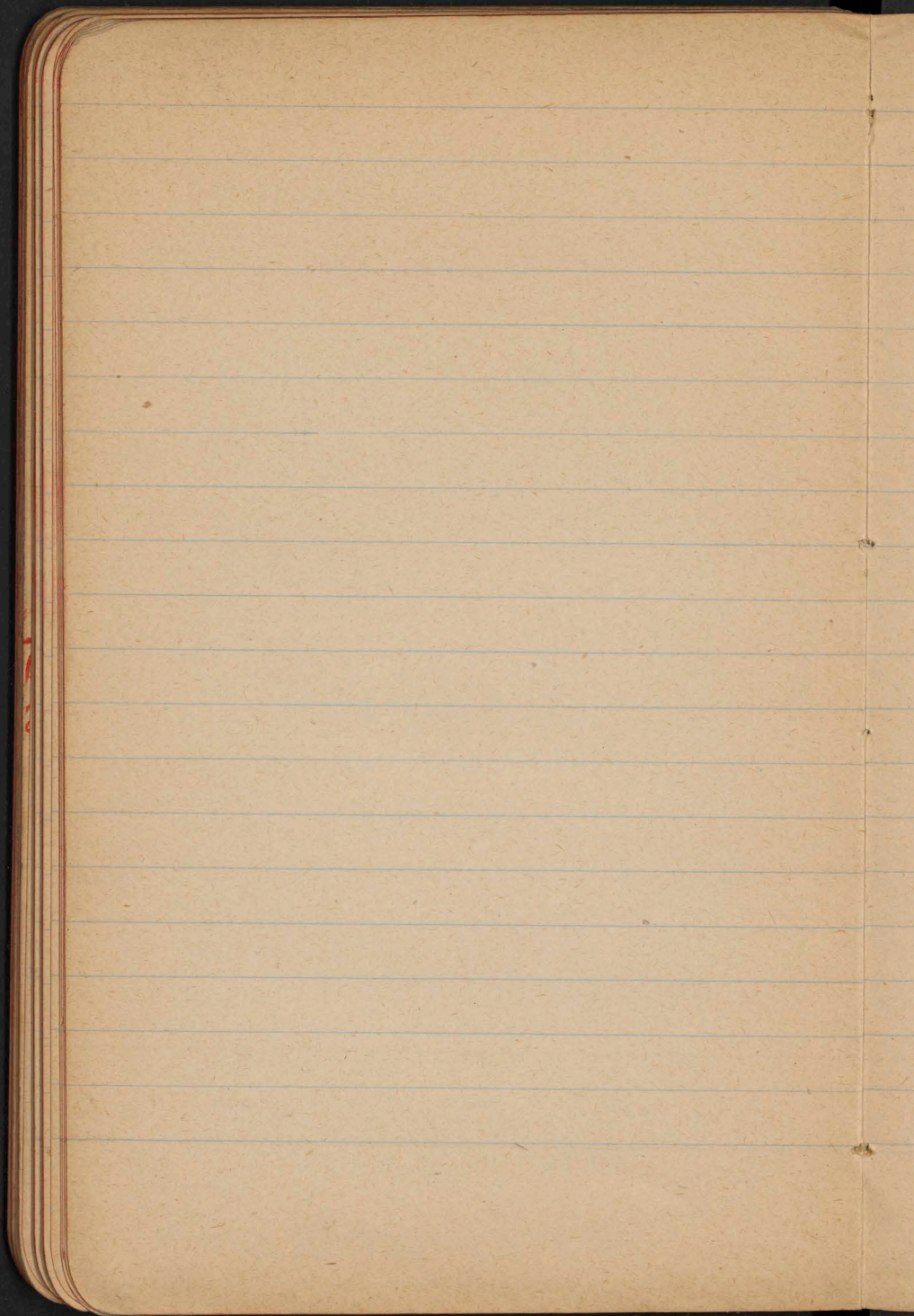


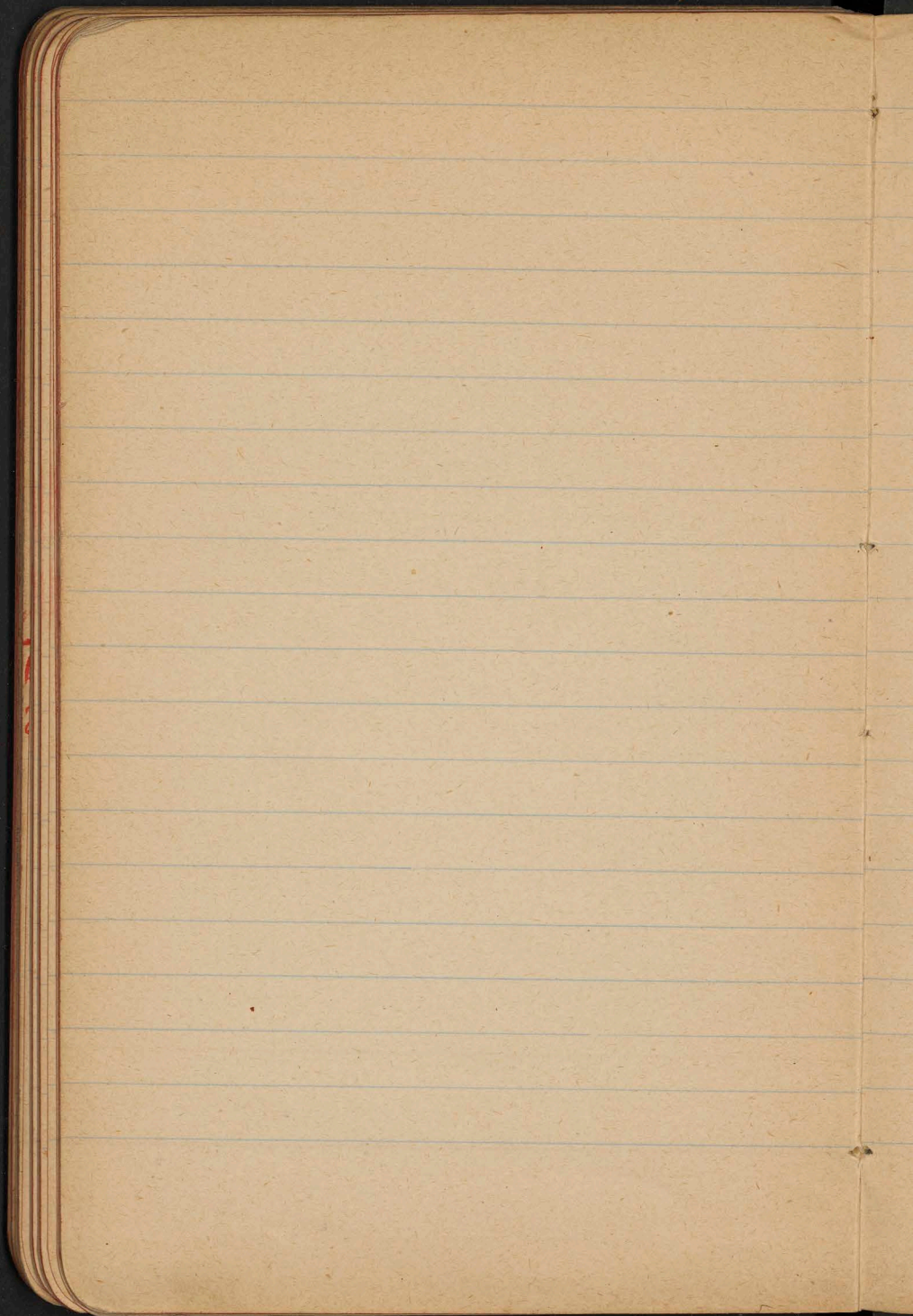














$$\frac{20}{a} = \frac{1}{2} \cdot 10'$$

$$a = \frac{20}{\frac{1}{2} \cdot 10'}$$

$$1'30103 \quad 1'30105$$

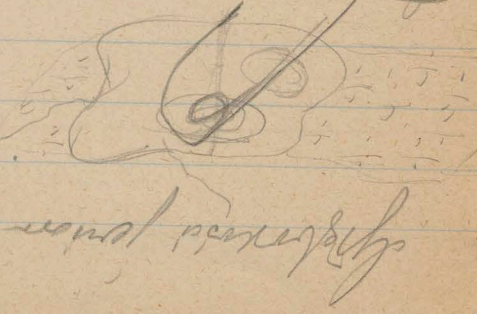
$$24632 \quad 92384$$

$$2 \cdot 05441 \quad 1.39722$$

$$\underline{113 \text{ m.}} \quad 24 \text{ m}$$

Isidorowsky
Ternov
Ternov

18
 17
 16
 15
 14
 13
 12
 11
 10
 9
 8
 7
 6
 5
 4
 3
 2
 1



Temp. in air - 11.0°
 Temp. in soil (at 3.5m) 6.0° ?
 Temp. in soil (at 1.5m) 1.2 1.5 1.8 1.8 2.2
 1.6 2.0 2.5 3.8 3.8 3.5 3.2 3.0 3.1
 3.6 3.0 3.0 3.2 3.2 3.2 2.6

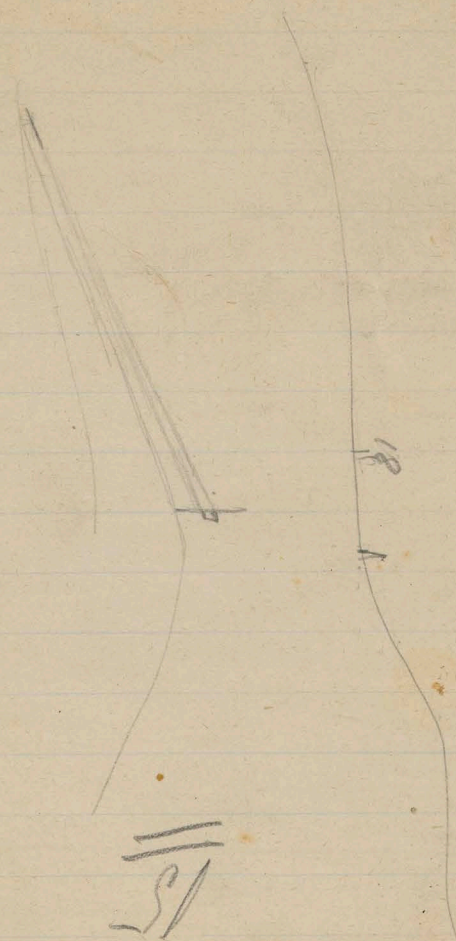
1. II ~~Temp. in soil~~ Temp. in soil - 1.0m
 2. II Temp. in soil of 2.5m - 1.0m
 3. II Temp. in soil of 1 1/2 m - 1.0m
 4. II Temp. in soil of 2 m - 1.0m
 5. II Temp. in soil of 3 m - 1.0m
 6. II Temp. in soil of 4 m - 1.0m
 7. II Temp. in soil of 5 m - 1.0m
 8. II Temp. in soil of 6 m - 1.0m
 9. II Temp. in soil of 7 m - 1.0m
 10. II Temp. in soil of 8 m - 1.0m
 11. II Temp. in soil of 9 m - 1.0m
 12. II Temp. in soil of 10 m - 1.0m
 13. II Temp. in soil of 11 m - 1.0m
 14. II Temp. in soil of 12 m - 1.0m
 15. II Temp. in soil of 13 m - 1.0m
 16. II Temp. in soil of 14 m - 1.0m
 17. II Temp. in soil of 15 m - 1.0m
 18. II Temp. in soil of 16 m - 1.0m

10
15
14
13
12
11
10
9
8
7
6
5
4
3
2
1

2
1/2

1/2

2
14
13
11
10
0
14
13
12
5
11
9
8
4
5
6
5
4
3
2
1



K-90
Ed. Hawtashak
* * *
* * *

