

*kat. komp.*

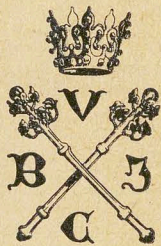
CIMELIA

Qu	5166
----	------

Qu	5167
----	------

Qu	5168
----	------

Qu	5169
<i>Qu</i>	5169a



5166-5169

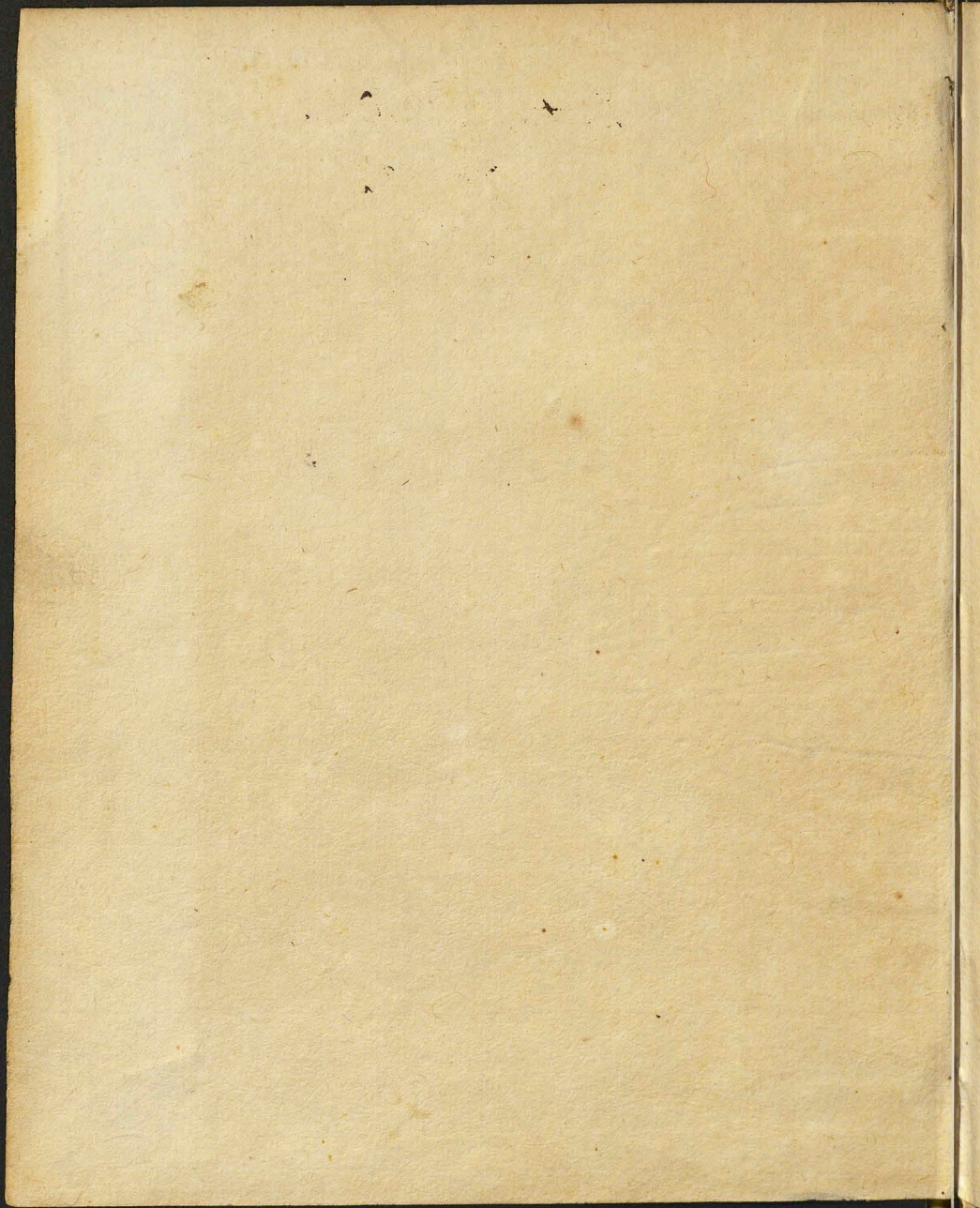
*a*

CIMELIA

Calbreath .

103

100.



VIRTVS  
INVIDIAE VICTRIX.



Frydualdi Egregii, En vera hec Michaelis imago est.  
Sic vultum, barbam, & talem Habitum ille tulit,  
Nempe Gedanenses Rectores quando rebelles.  
REGIS in aspectu detulit intrepide.

IVSTVS VT PALMA FLOREBIT.



Auro hinc candentes Gladios, & fronde virentes  
Palmas, En elyvens fert Frydenstalde tuus.  
Der Gerecht wirt geynen / als der PALM.  
Op gleichs veltreysal mit ein ssalln.  
Drum sehet Ehr FRYDwale drei Palmbeim.  
In seinen WAPPen / artlich sein.

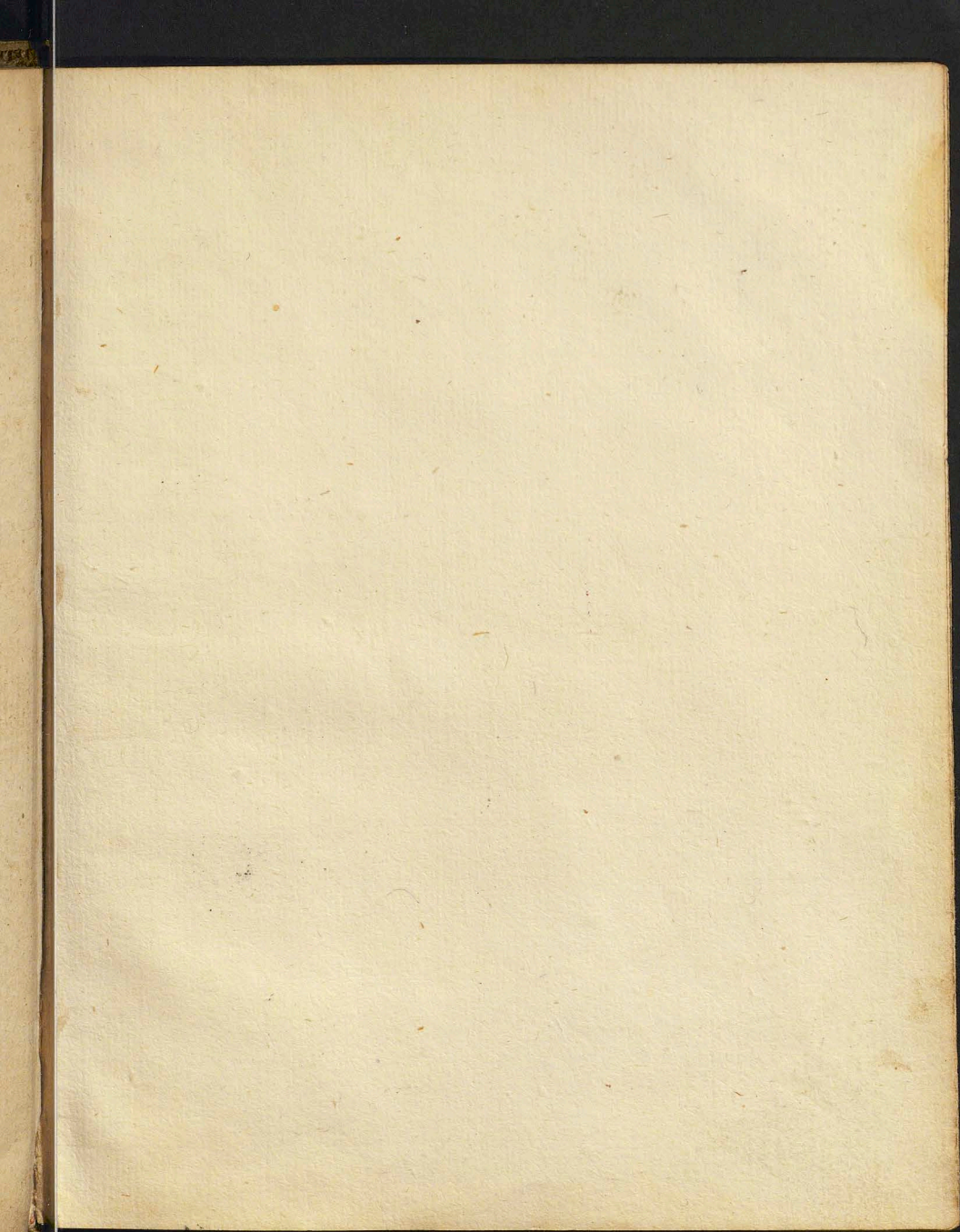
12

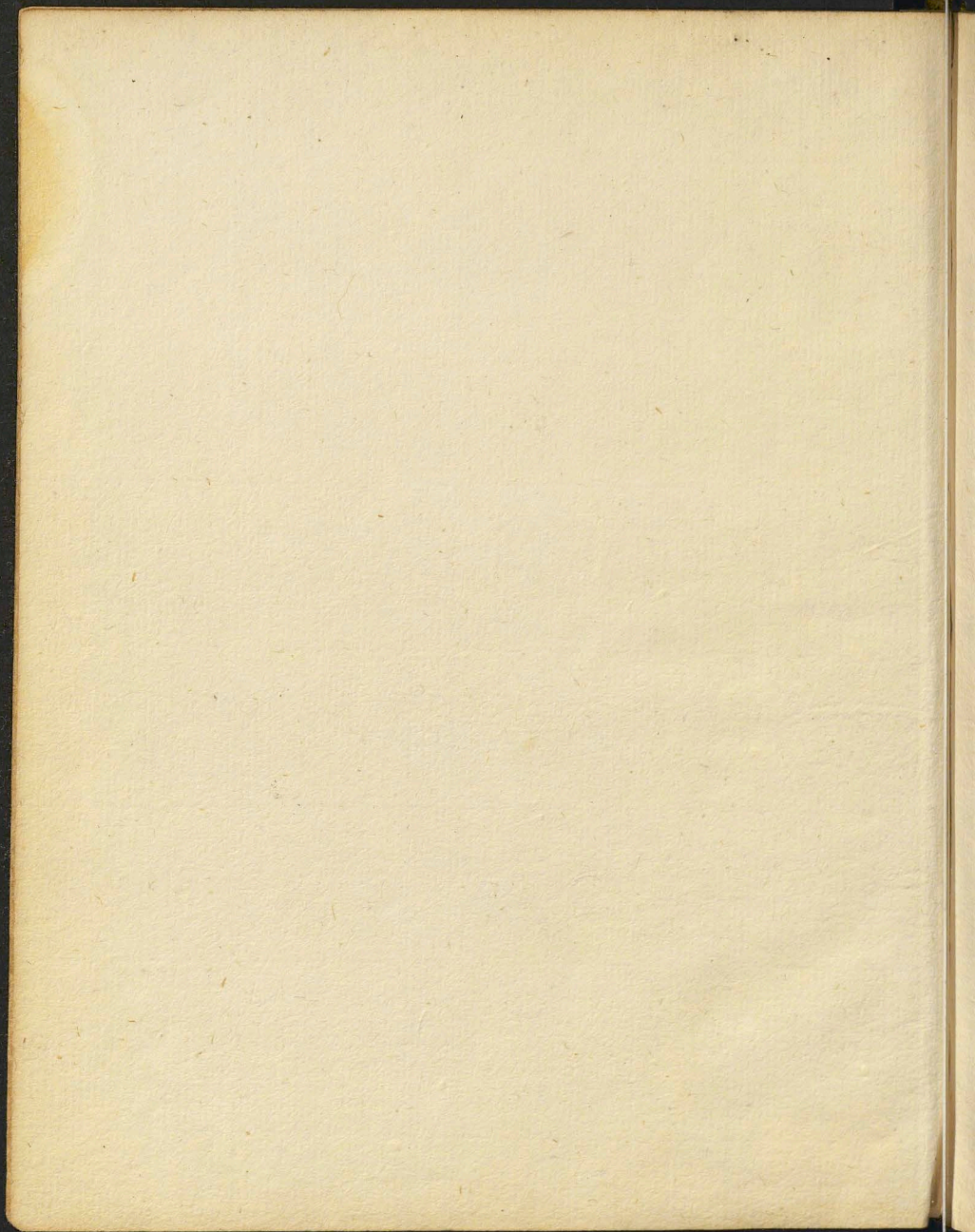
gedruckt zu grez durch  
Welchlorem Nerinck  
Im Jahr des Herren/  
M. D. LXXX.

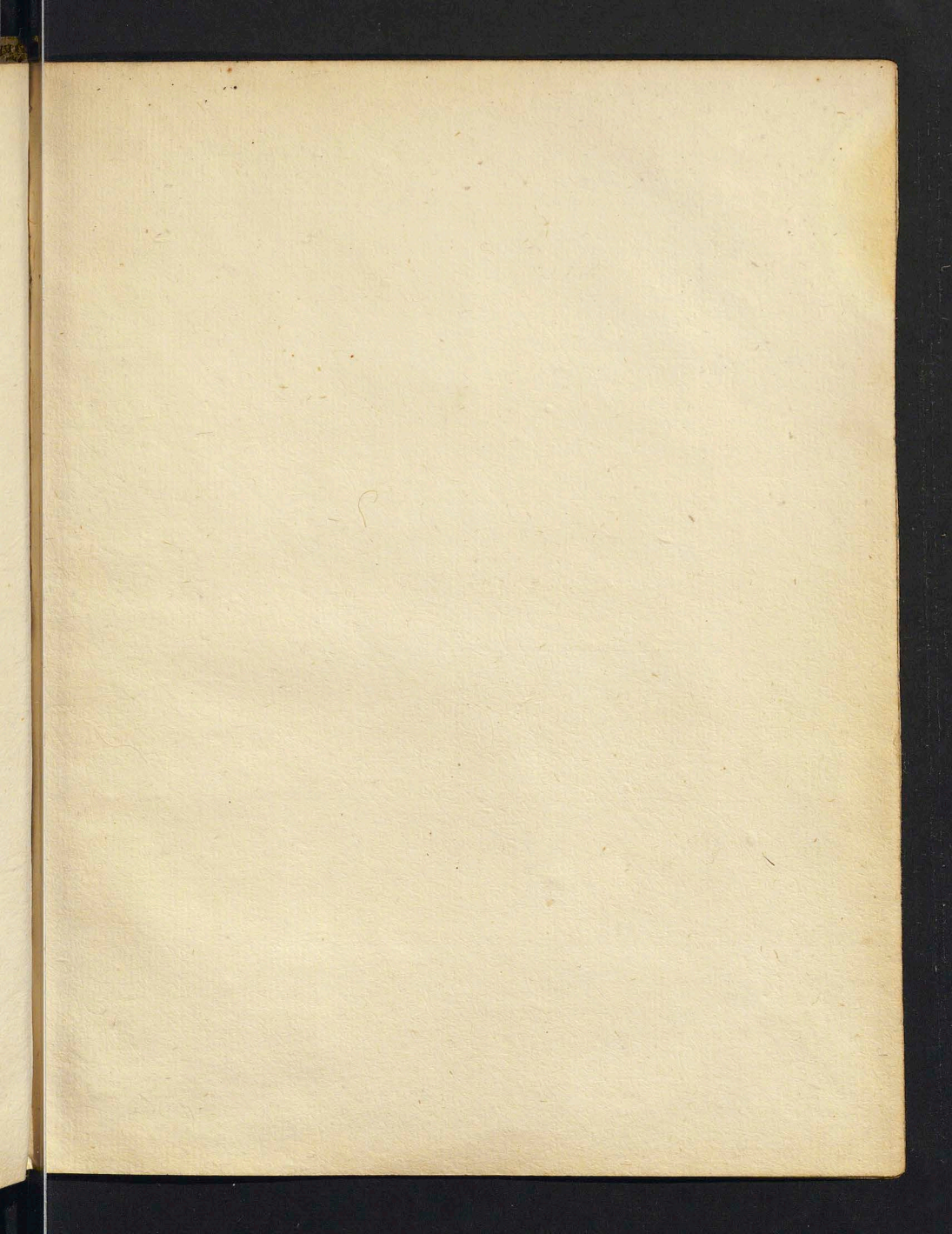
BIBLIOTECA CIVICA

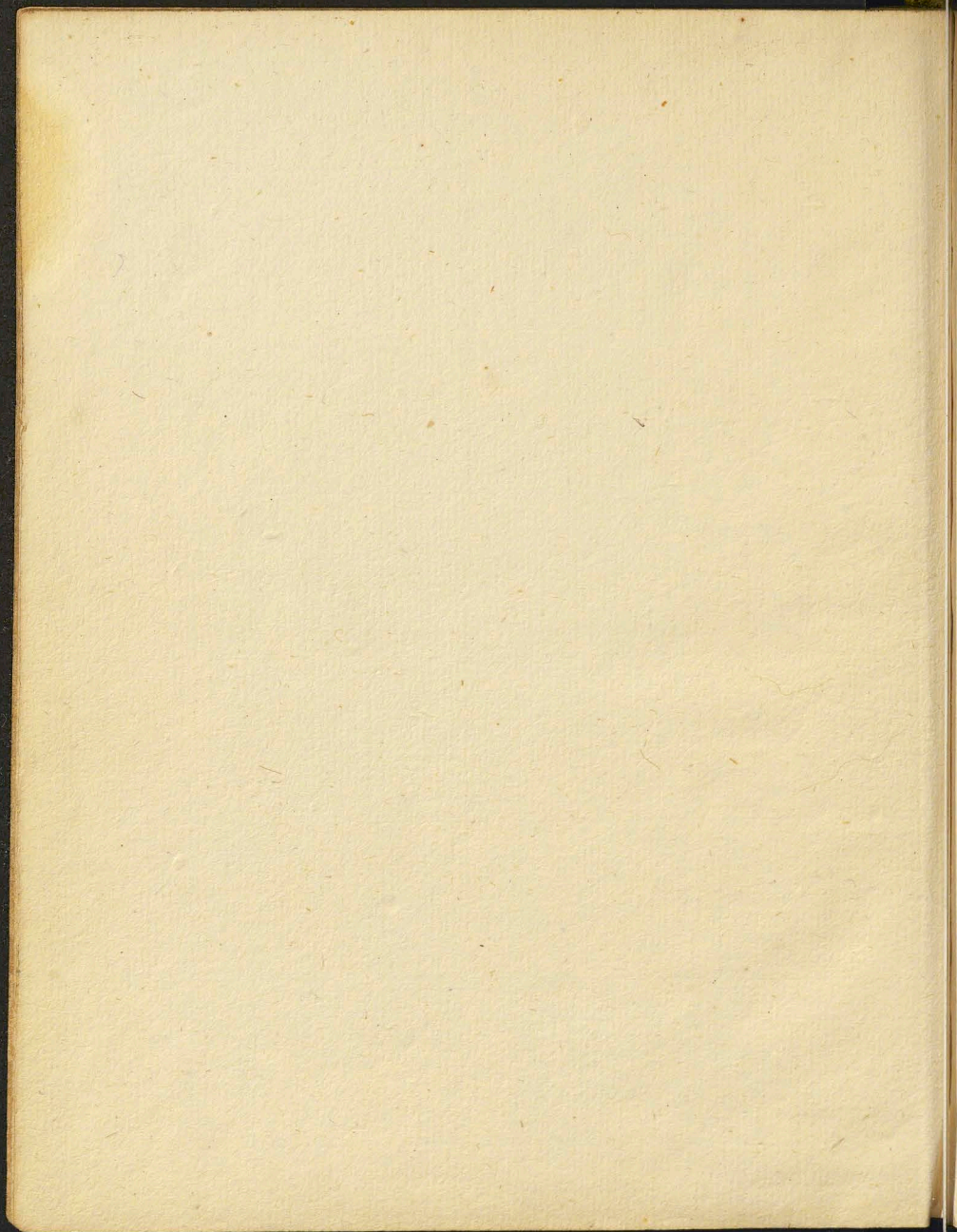


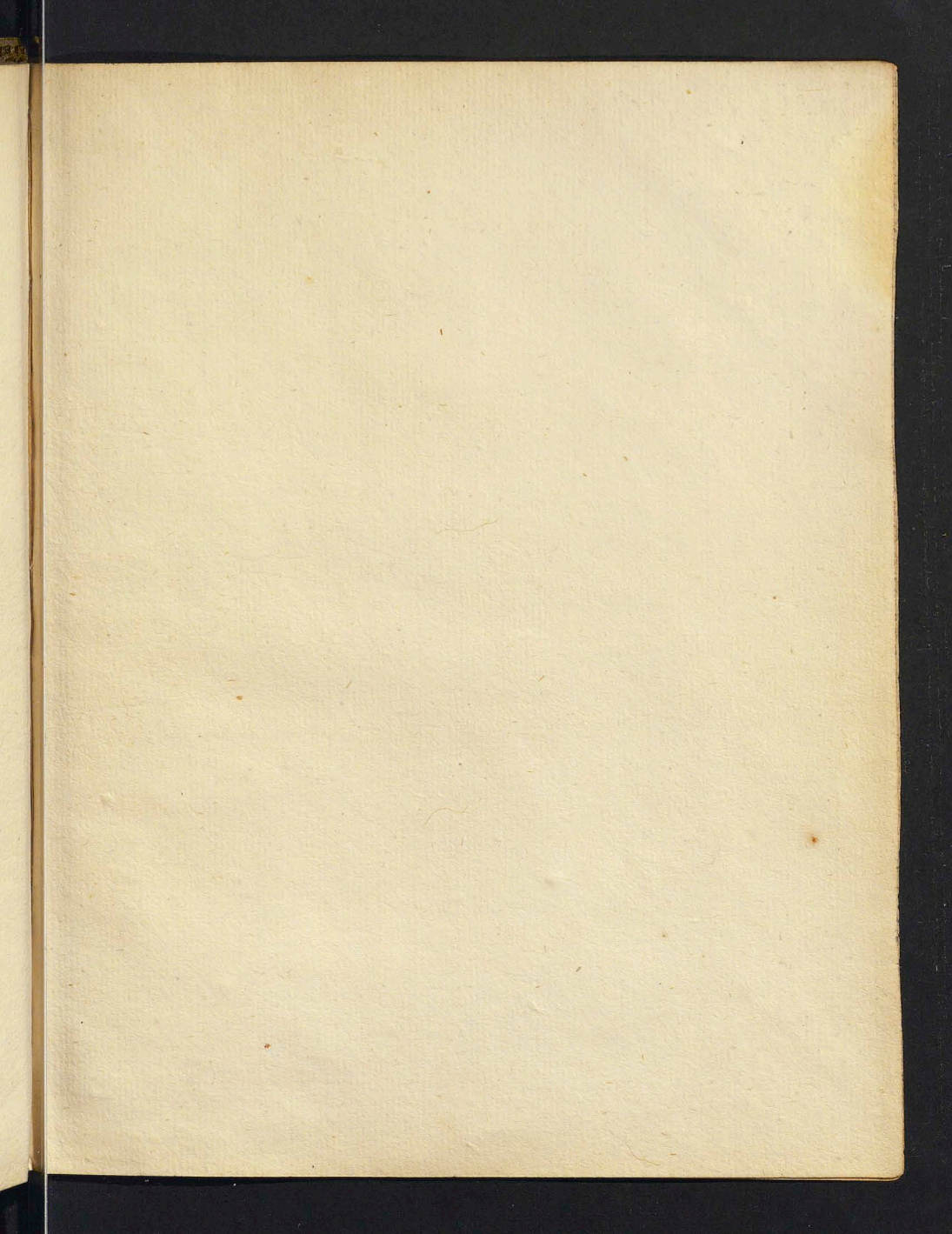
MILANO

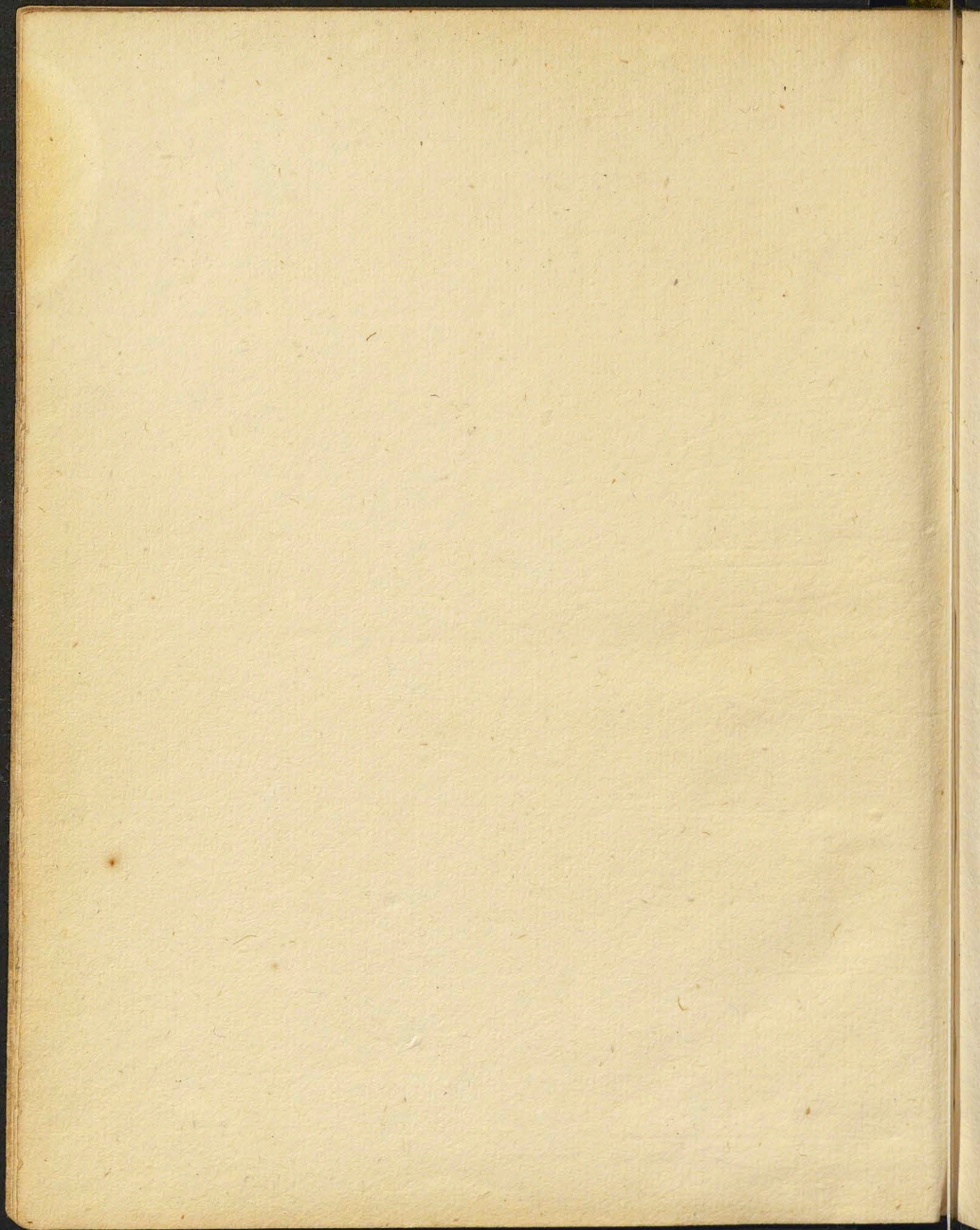


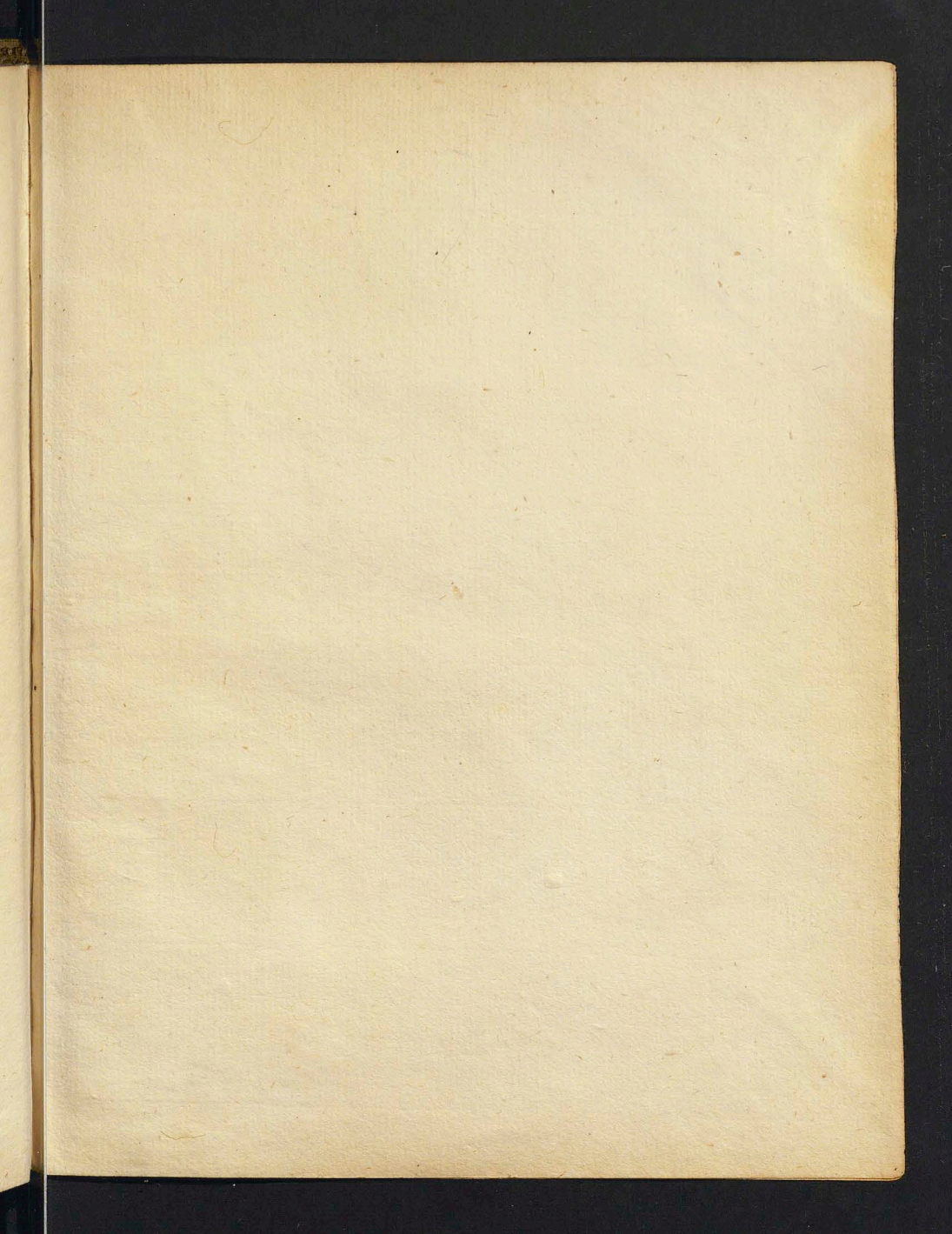


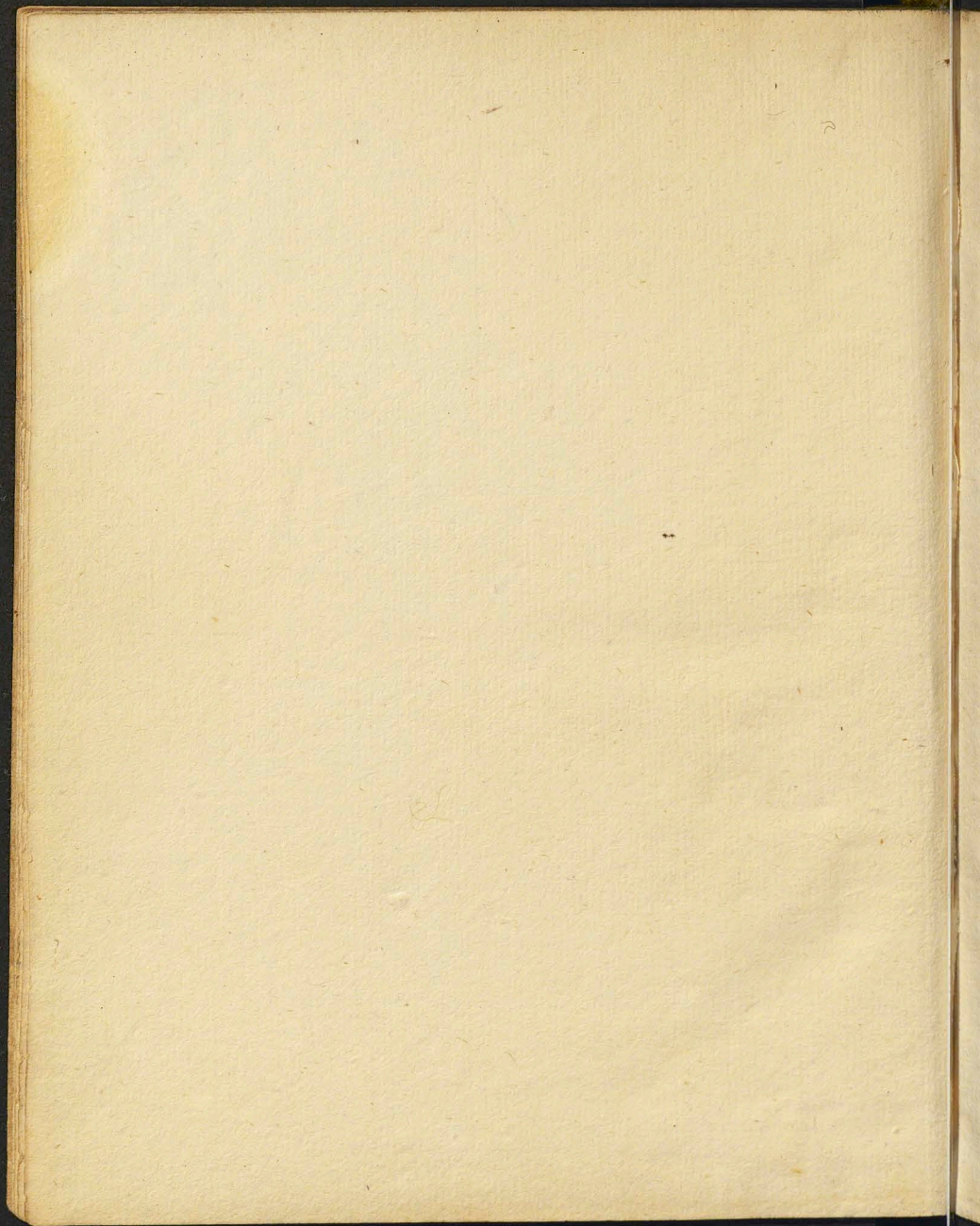


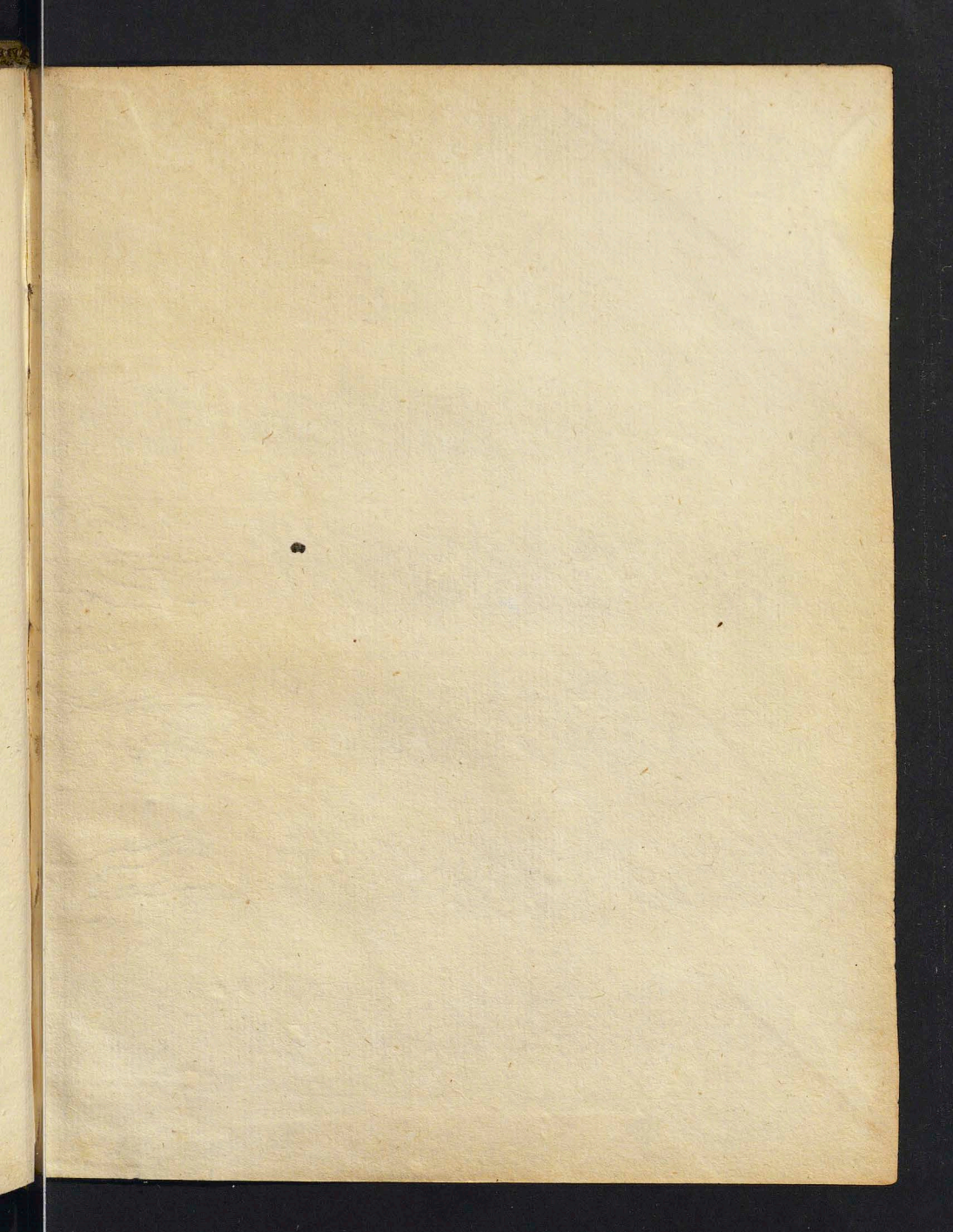


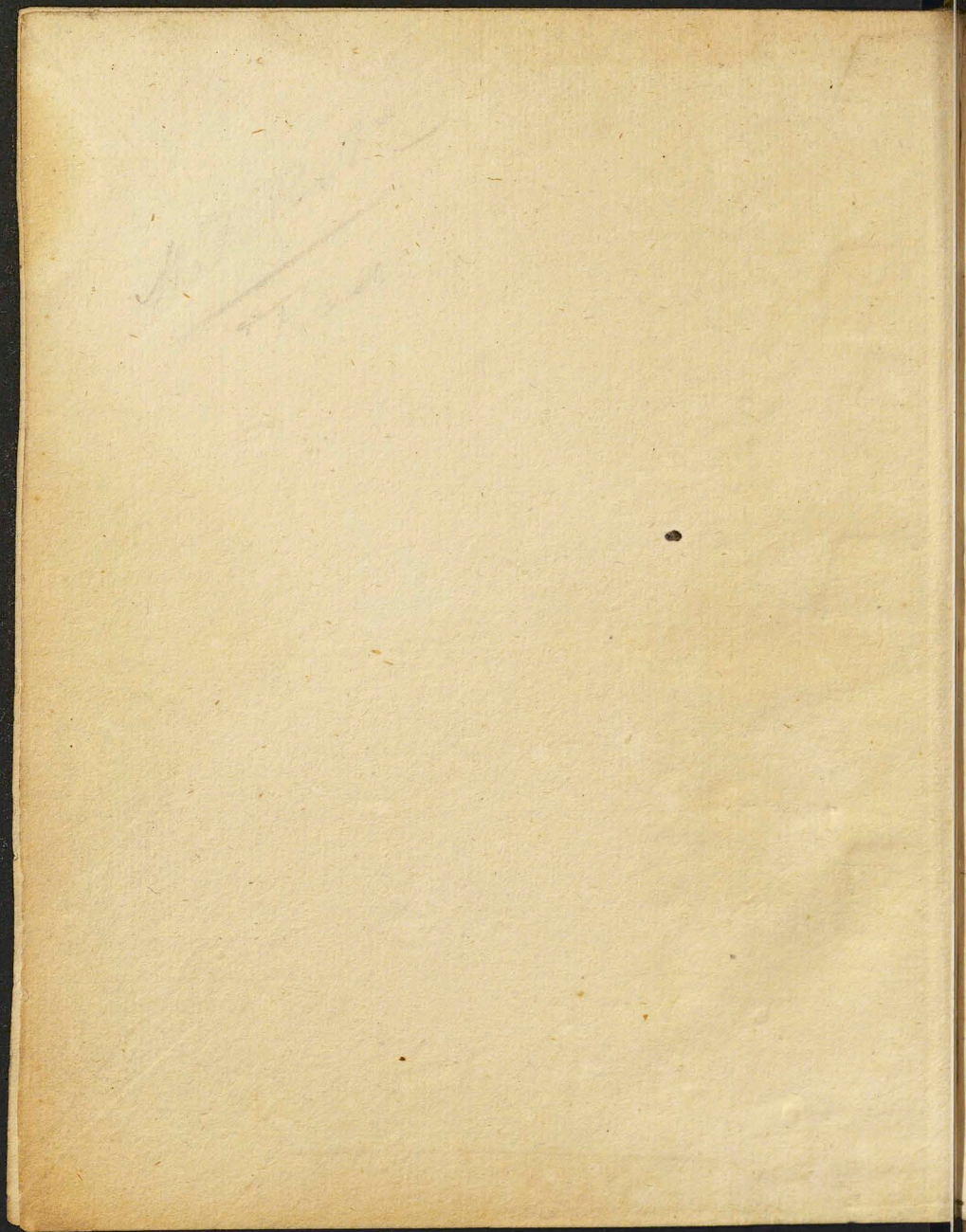












Biblioteka Jagiellońska



stdr0034836



Medusa